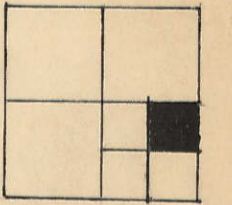


Transfer Page 62d-172

E. 1/4 Corner SEC. 3



1/4 SECTION LINE

CORP. LIMITS AUG. 12, 1959



Stephen L. Schalk & Gary Williams

8-24-89

414523-89

37

1956.73

X-2

EAST LINE SEC. 3-78-3

33

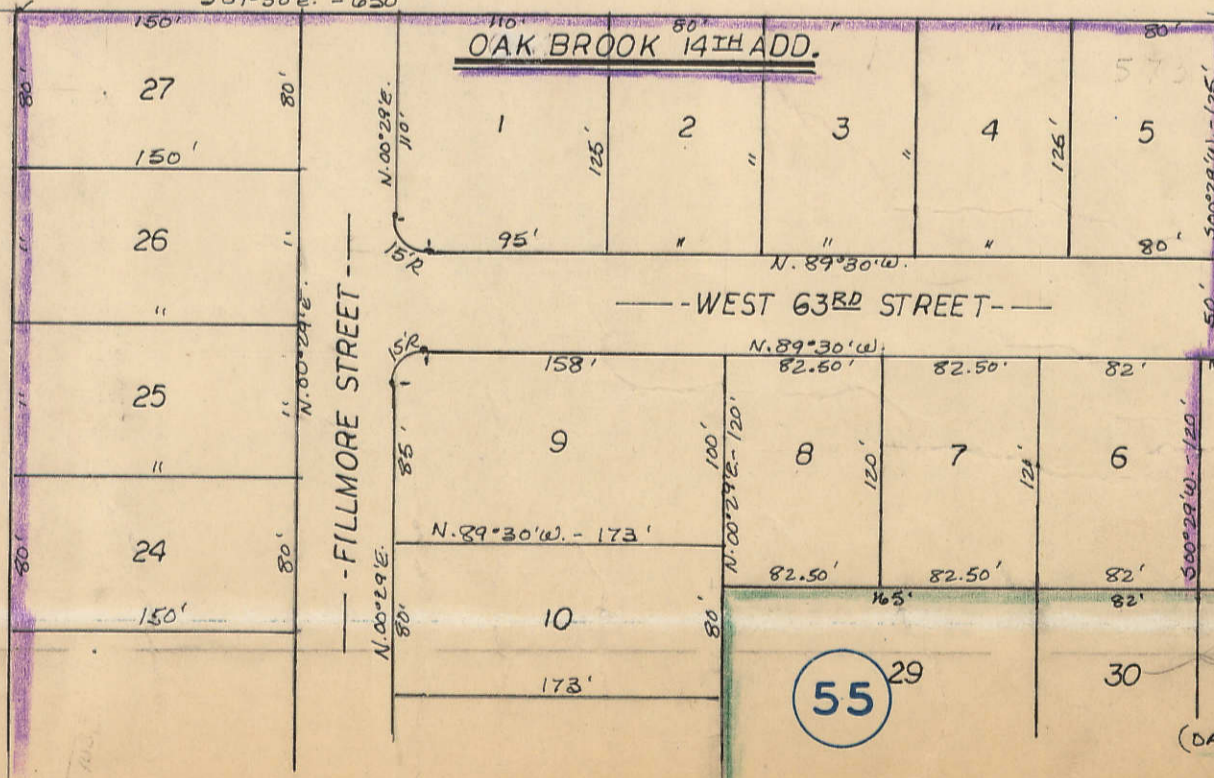
W 337-150

Rob Fick Inc
19131-2006

906.76

589°30'E - 630'

OAK BROOK 14TH ADD.



55

(OAK BROOK 13TH ADD.)