

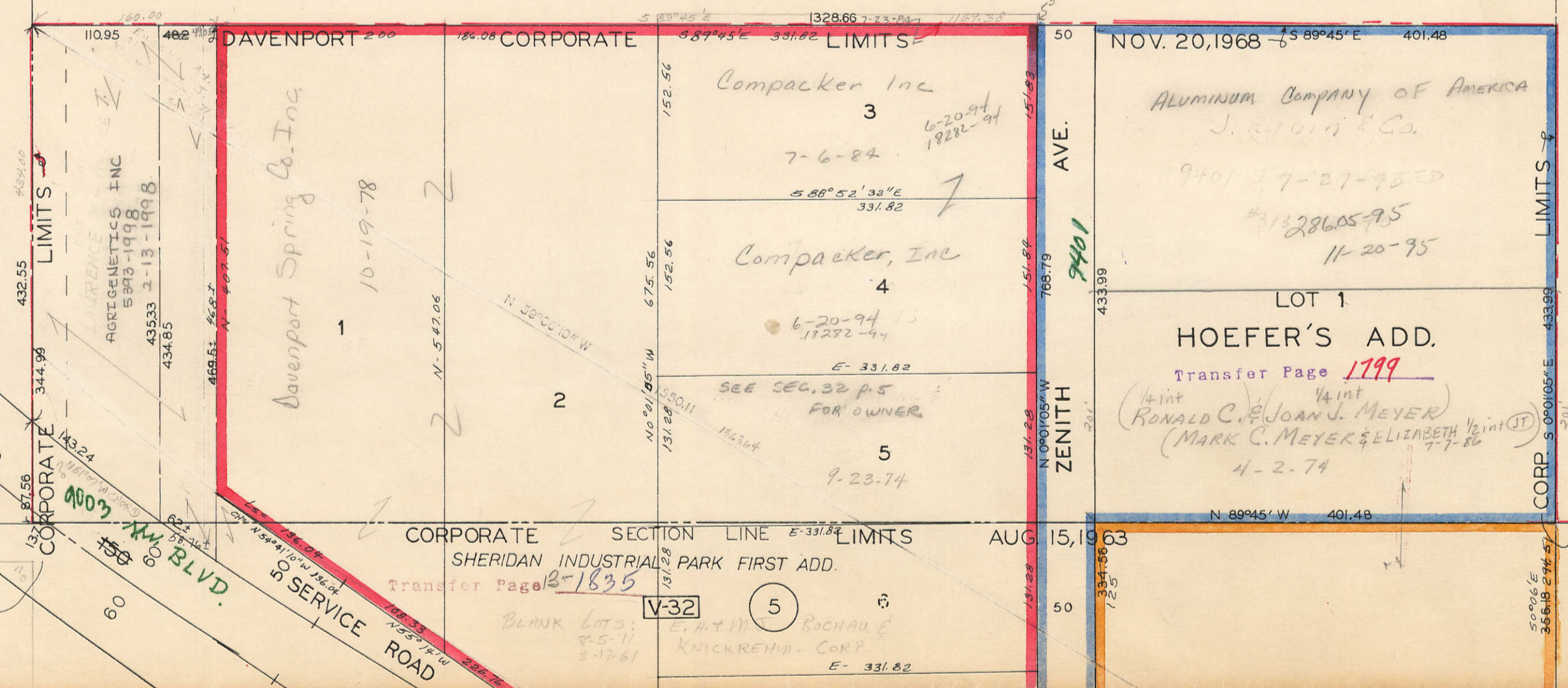
SEC 29-79-3

SEE SECTION 29-79-3 SHERIDAN TOWNSHIP

SEE SEC. 29 SHERIDAN TWP

1/4 SEC. LINE
N 2223.08

S 0°01'55"E
2665.20



STATE HWY. 130

AGRI GENETICS INC
5373-1998
43533 2-13-1998
43485

Davenport Spring Co. Inc
10-19-78

Compacker Inc
3
6-20-94
18292-94

Compacker, Inc
4
6-20-94
18292-94

ALUMINUM COMPANY OF AMERICA
J. R. ... & Co.
9401 27-27-95
#3128605-95
11-20-95

LOT 1
HOEFER'S ADD.
Transfer Page 1799
1/4 int RONALD C. & JOAN J. MEYER
(MARK C. MEYER & ELIZABETH 1/2 int JT)
7-7-86
4-2-74

CORPORATE SECTION LINE
SHERIDAN INDUSTRIAL PARK FIRST ADD.
AUG 15, 1963

BLANK LOTS
2-5-77
3-17-61
V-32
5
ROCHAU &
KNICKREHT - CORP
E- 331.82

Sheridan Twp.