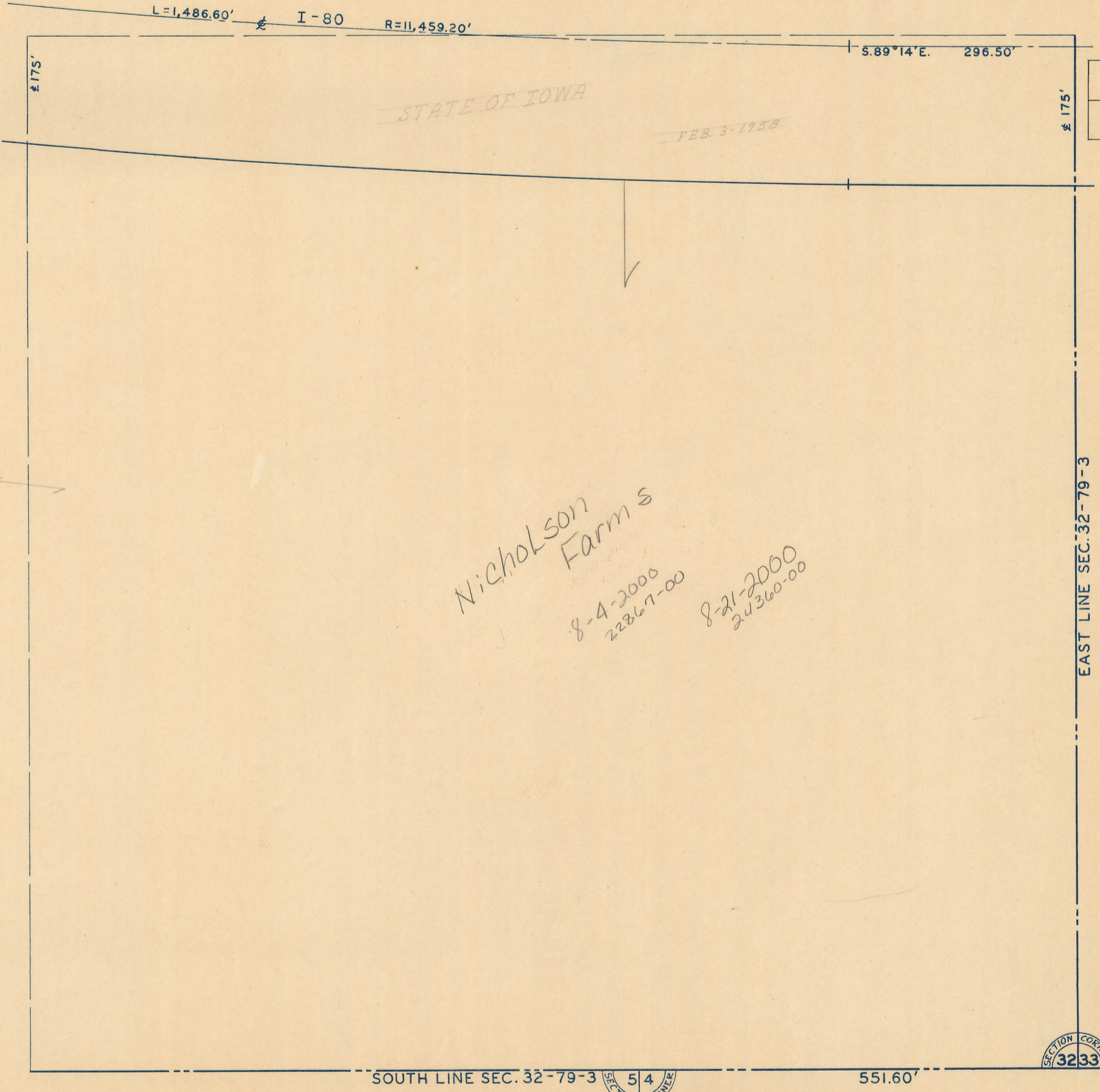


39



53

W-33

49

7

V-5

W-4

1

SOUTH LINE SEC. 32-79-3

551.60'

SECTION CORNER
3233

SECTION CORNER
54

STATE OF IOWA

FEB. 3-1958

Nicholson
Farm S

8-4-2000
22867-00

8-21-2000
24360-00

175'

175'

EAST LINE SEC. 32-79-3

L=1,486.60'

I-80

R=11,459.20'

5.89°14'E. 296.50'