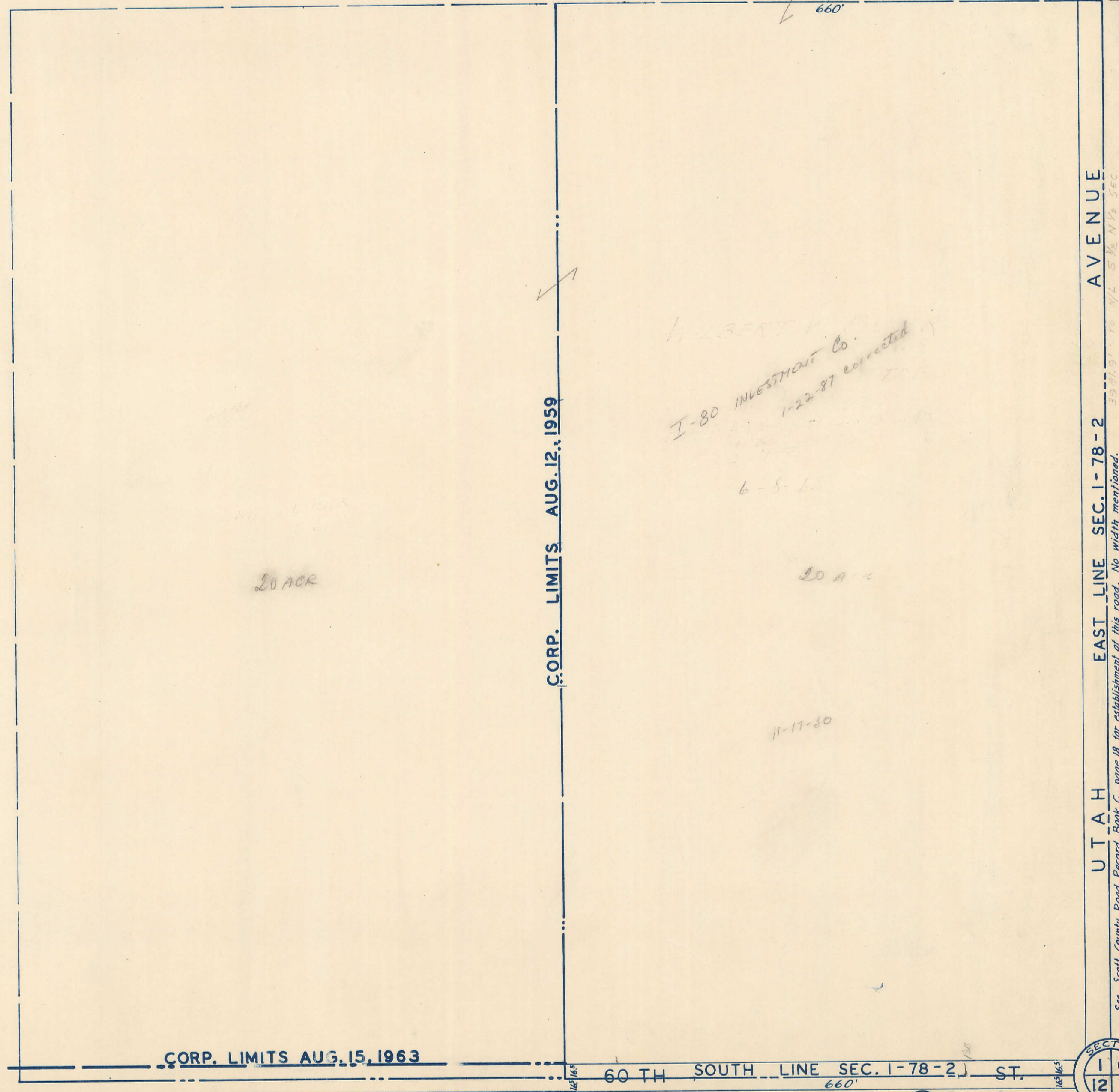
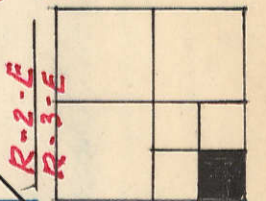


39

TRANSFER PAGE 51ds-32



53

20 ACR

I-80 INVESTMENT Co.
1-22-87 corrected
6-8-80
11-17-80

20 ACR

UTAH EAST LINE SEC. 1-78-2 AVENUE
39 81.9' TO N/2 S 1/2 N 1/2 SEC.
See Scott County Road Record Book C, page 18, for establishment of this road. No width mentioned.
No record could be found of it being vacated.

V-6

49

CORP. LIMITS AUG. 15, 1963

60 TH SOUTH LINE SEC. 1-78-2 ST.

V-12

7

