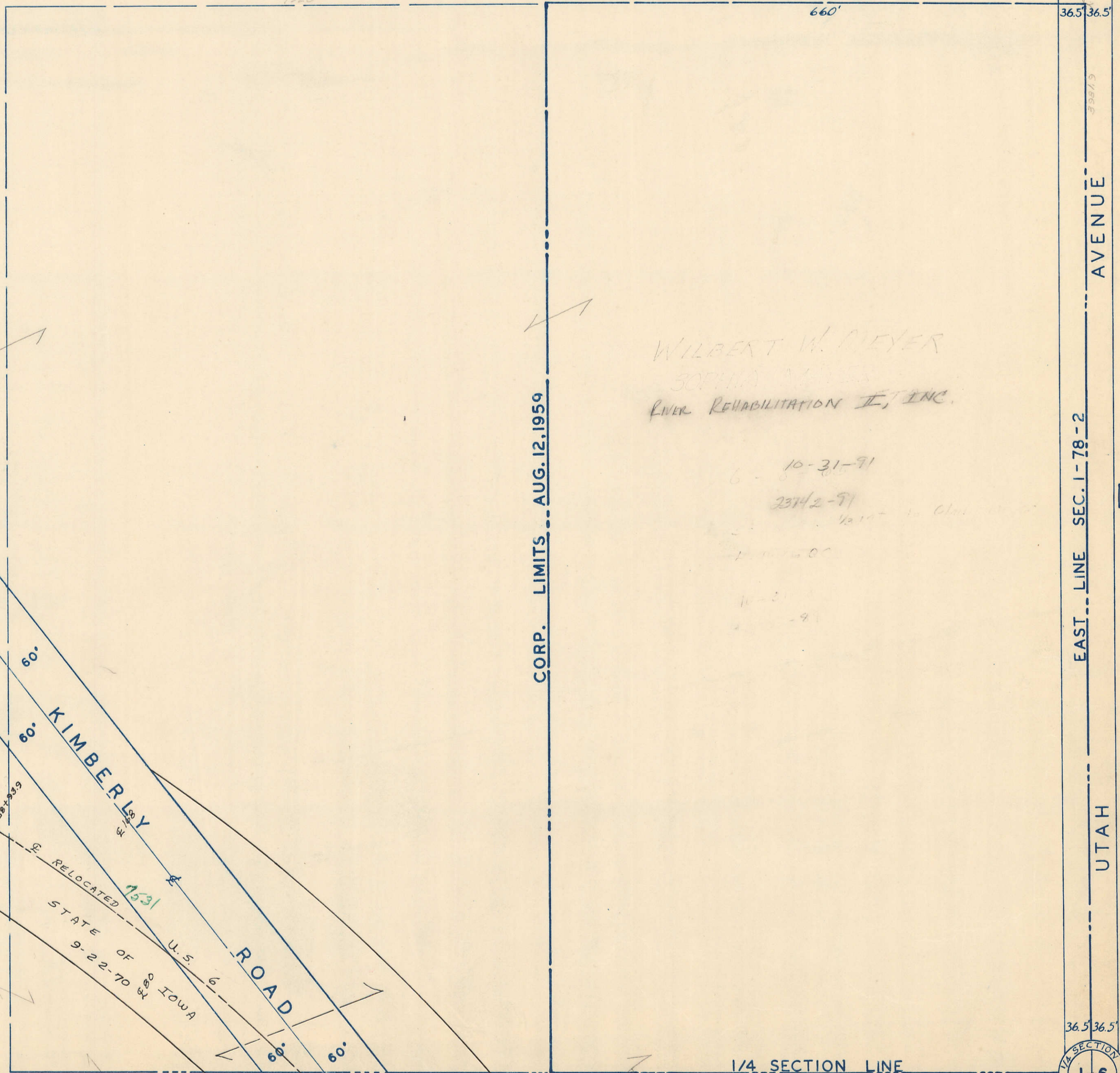


7

TRANSFER PAGE 51ds-32

21



V-6

17

1/4 SECTION
1-6
CORNER

39

E 168

E 80 P.T. 2384-339

RELOCATED
STATE OF IOWA
9-22-70
E 80

U.S. 6
ROAD

KIMBERLY

1/4 SECTION LINE

E. 1/4 Corner SEC. 1

UTAH

EAST LINE SEC. 1-78-2

AVENUE

WILBERT W. MEYER
SOPHIA MEYER
RIVER REHABILITATION II, INC.

10-31-91

23142-91