

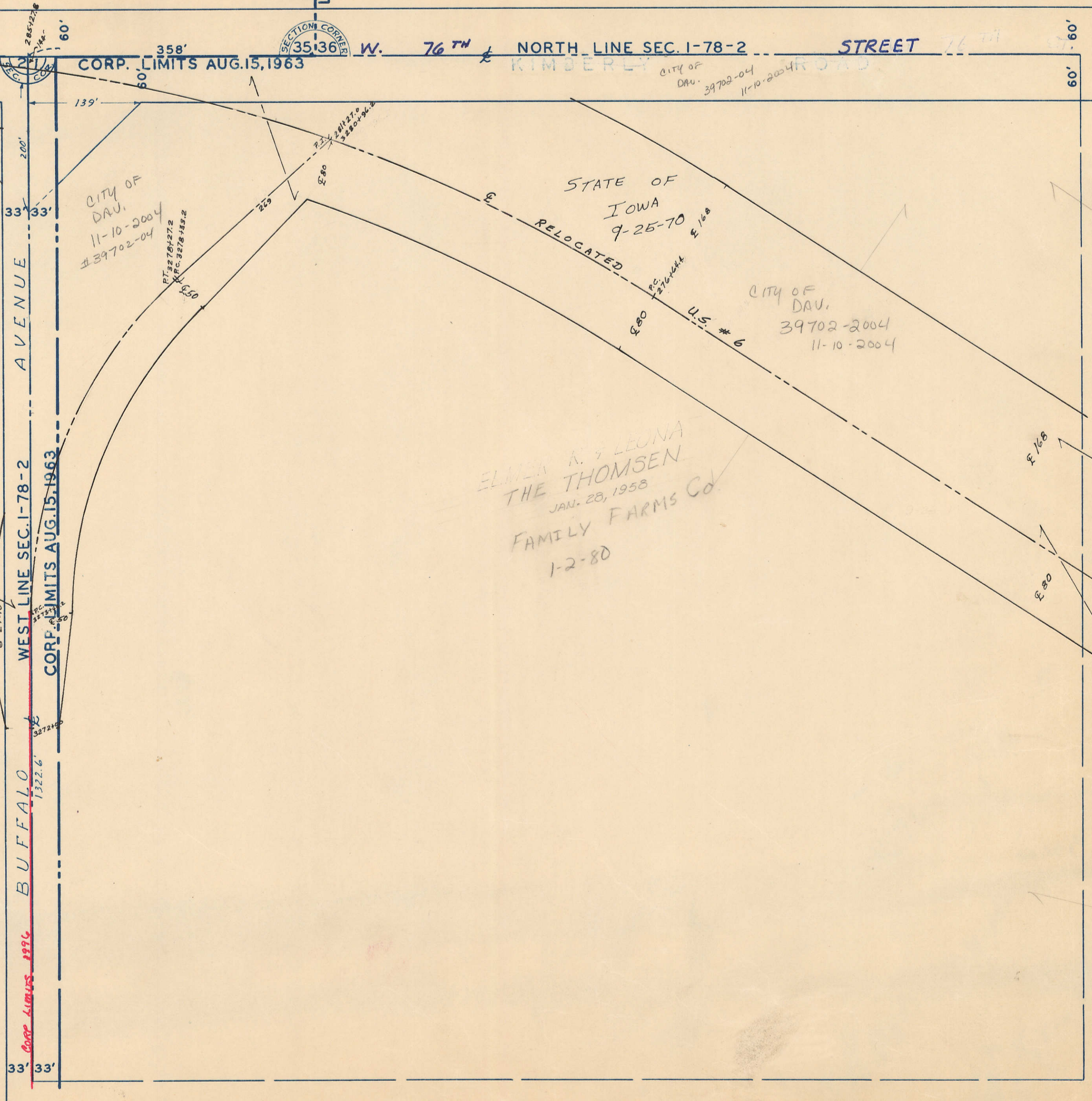
49 V-36

TRANSFER PAGE 5lds-32

CORP. LIMITS



292789.3 =  
P.T. 287454.4  
S22.3'W



WEST LINE SEC. 1-78-2  
CORP. LIMITS AUG. 15, 1963  
BUFFALO AVENUE

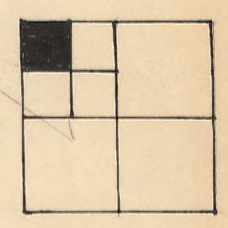
358' W. 76<sup>TH</sup> NORTH LINE SEC. 1-78-2 STREET

CITY OF DAV.  
11-10-2004  
#39702-04

STATE OF IOWA  
RELOCATED  
9-25-70

CITY OF DAV.  
39702-2004  
11-10-2004

ELMER R. & LEONA  
THE THOMSEN  
JAN. 28, 1958  
FAMILY FARMS Co.  
1-2-80



3