

W-9

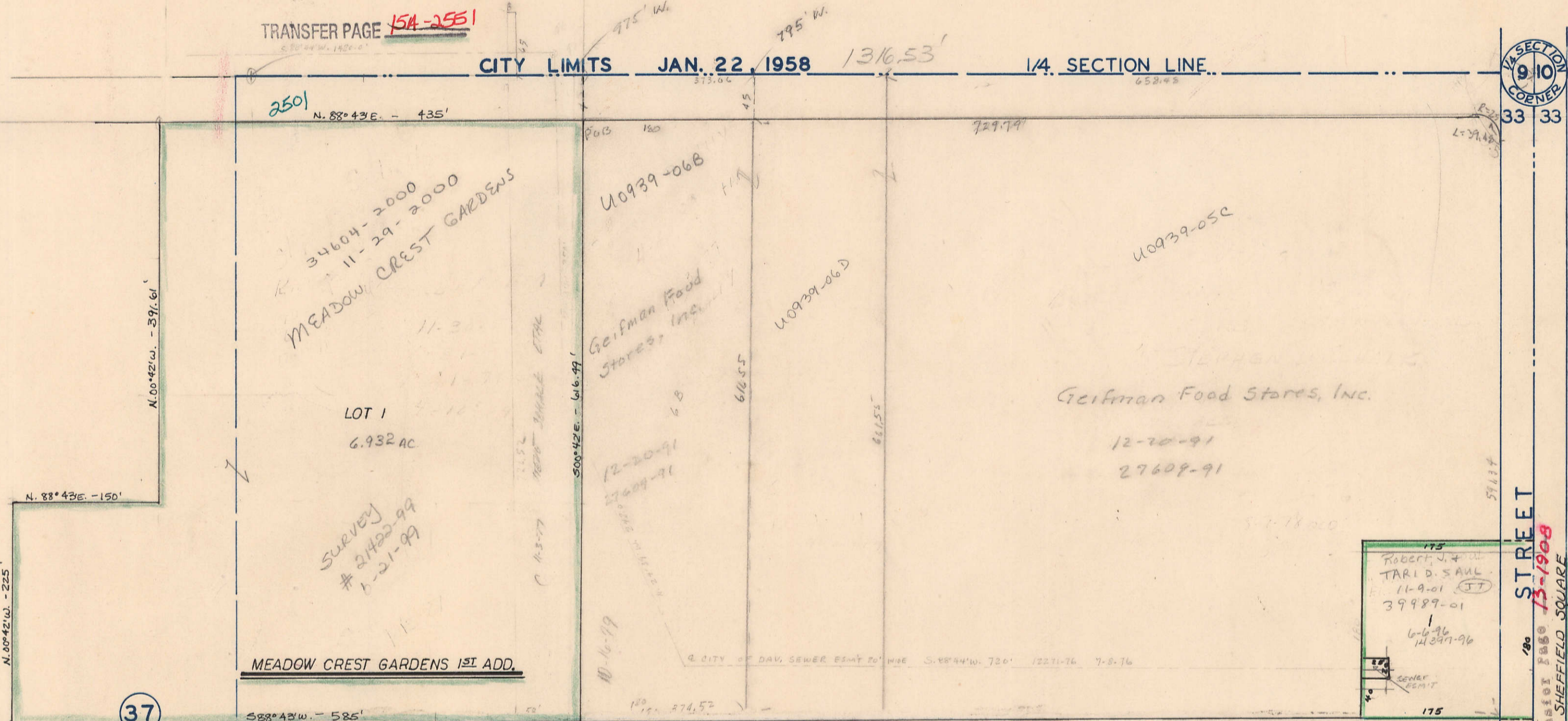
23

Transfer Page 6lds-178

TRANSFER PAGE 154-2551

CITY LIMITS JAN. 22, 1958 1316.53' 1/4 SECTION LINE

1/4 SECTION CORNER
9 10



N. 00°42'12" - 225'
N. 88°43'E - 150'

N. 00°42'12" - 397.61'

250' N. 88°43'E - 435'

LOT 1
6.932 AC

Survey # 24422-99
1-21-99

MEADOW CREST GARDENS 1ST ADD.

S 88°43'W - 585'

U0939-06B

Golfman Food Stores, Inc.

U0939-06D

U0939-05C

Golfman Food Stores, Inc.

12-20-91
27609-91

175
ROBERT J. +
TARI D. SAAL
11-9-01
39989-01
6-6-96
14397-96
175

180 PINE STREET
180 SHEFFIELD SQUARE
COMMERCIAL PARK 1ST ADDN

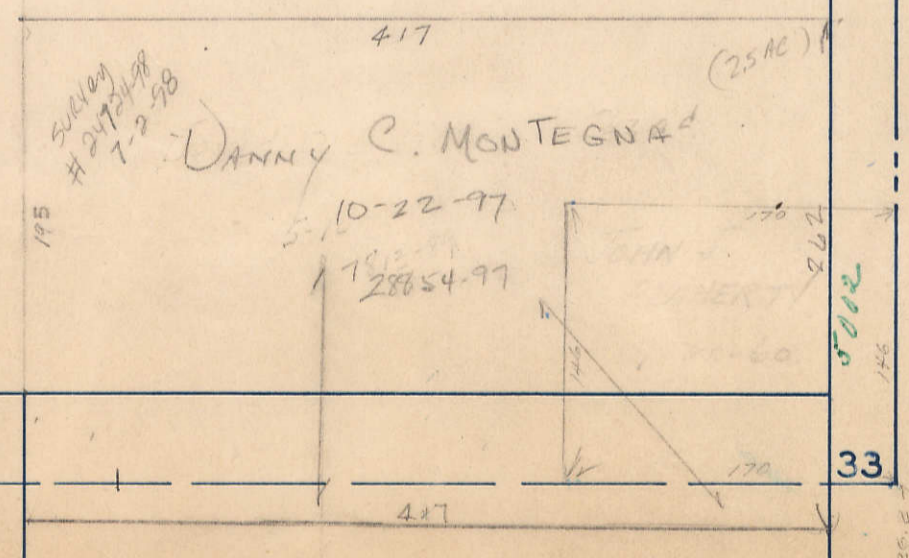
M-10

1/2 int. Patricia Ann Williams
1/2 int. ...
1/3 int. ... Mary Flaherty

GOSPEL MISSION TEMPLE OF DAV.
24726-98
24725-98
7-2-98

5-20-90

1-3-72



100'	42	43	44	45	46	47	48	100'	70'
	WEST		GREEN			ACRES			

55

33