

Transfer Page *61ds-176*

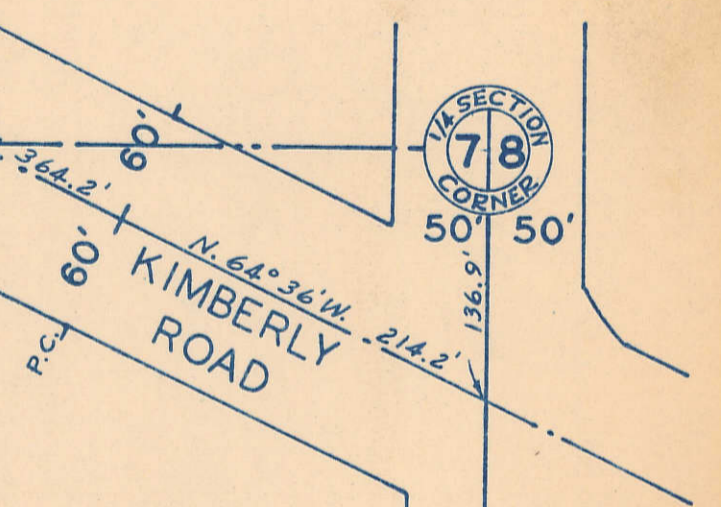
V-7

23

1/4 SECTION LINE

CITY LIMITS JAN. 22, 1958

78  
SECTION  
CORNER



40' 40'

EAST LINE SEC. 7-78-3  
WISCONSIN AVENUE

U-8

33

37

*Edwin Allen Maxwell*

*9-3-91  
19017-91*

CITY LIMITS JAN. 22, 1958

40' 40'

55