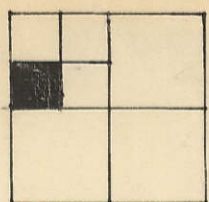


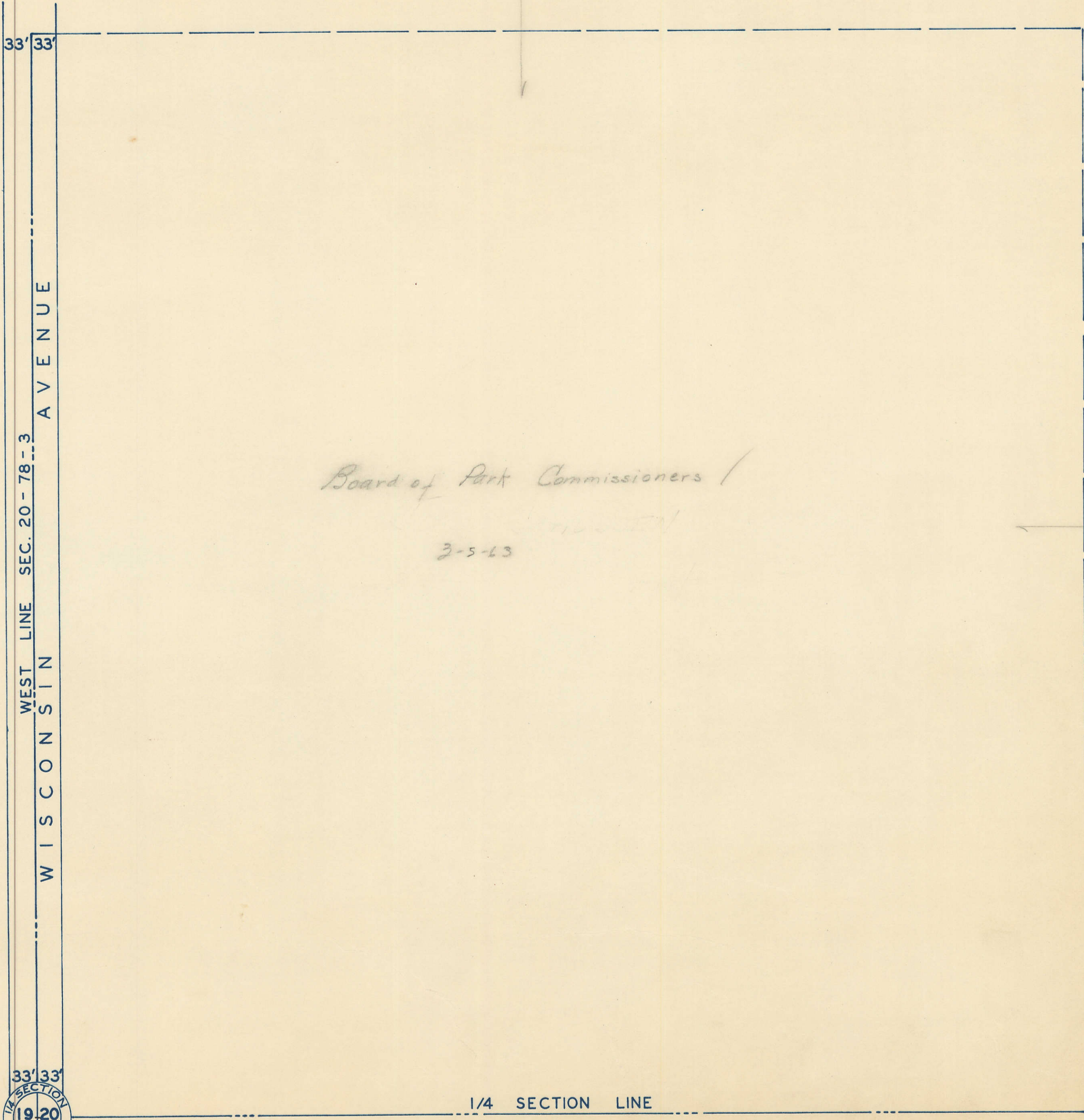
S.W. 1/4 , N.W. 1/4  
SEC. 20-78-3  
SCALE: 1 in. = 100ft.



17

Transfer Page 62ds-189

①



*Board of Park Commissioners /  
3-5-13*

33' 33'

33' 33'

T-19

②③

1/4 SECTION  
19.20  
CORNER

W. 1/4 Corner SEC. 20

1/4 SECTION LINE

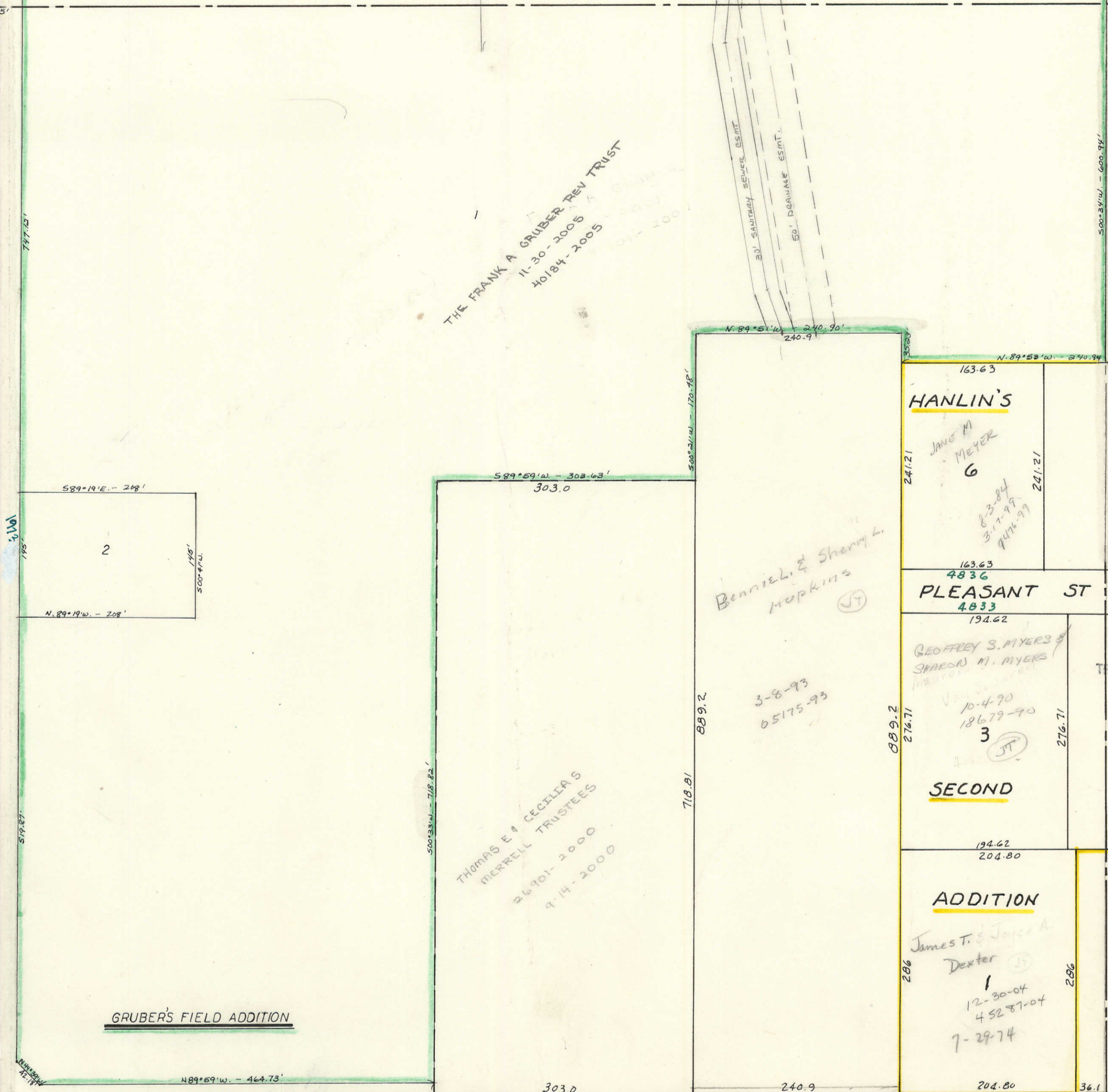
③③

①⑨

33

VOL T  
55  
SEC 19

WISCONSIN AVE.



THE FRANK A GRUBER REV TRUST  
11-30-2005  
10184-2005

Benniel & Sherry L.  
Hopkins  
3-8-93  
05175-93

THOMAS E & CECILIA S.  
MERRELL TRUSTEES  
26901-2000  
4-14-2000

HANLIN'S  
JANE M.  
MEYER  
6  
8-3-84  
3-17-99  
9-16-99

PLEASANT ST  
4836  
4833  
194.62

GEOFFREY S. MYERS  
SHARON M. MYERS  
10-4-90  
18679-90  
3  
JT

SECOND

ADDITION  
James T. & Joyce A.  
Dexter  
1  
12-30-04  
45287-04  
7-29-74

GRUBER'S FIELD ADDITION

WEST LOCUST STREET

51

TRANSFER PAGE 15TL-743

SW<sup>1</sup>/<sub>4</sub> COR SEC 20-78-3

TRANSFER PAGE 15A-2589

Section line between SECS 20 & 30

VOL S  
1  
SEC 29