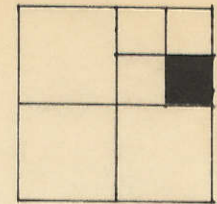
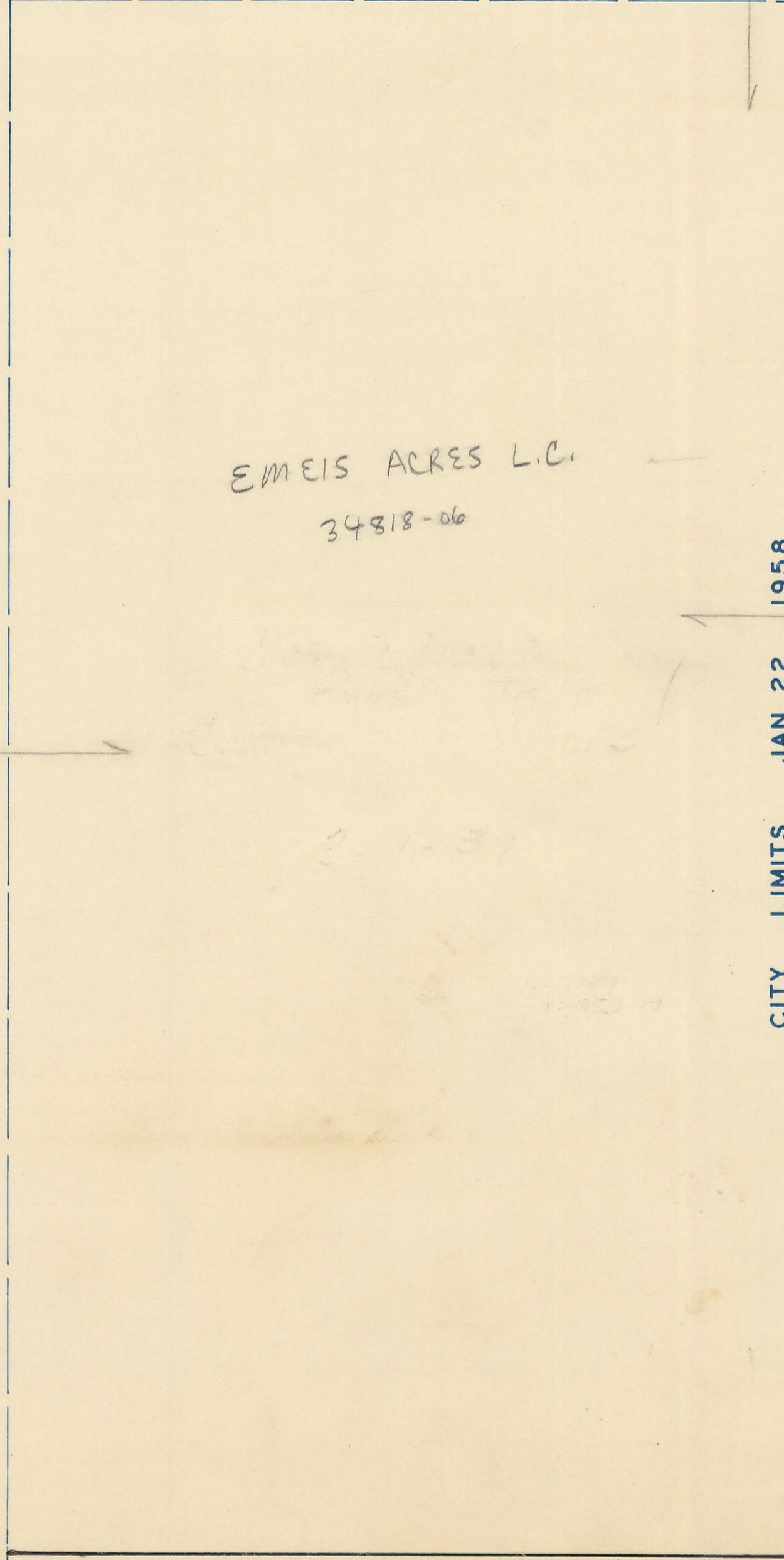


S.E. 1/4, N.E. 1/4
SEC. 19-78-3
SCALE: 1 in. = 100 ft.



Transfer Page 6lds-188

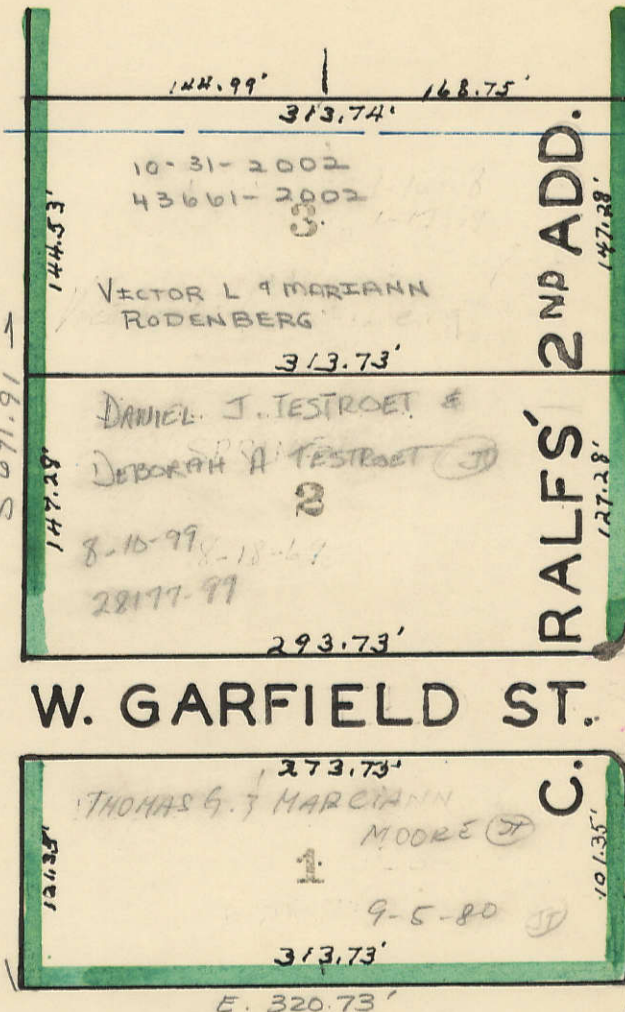
7



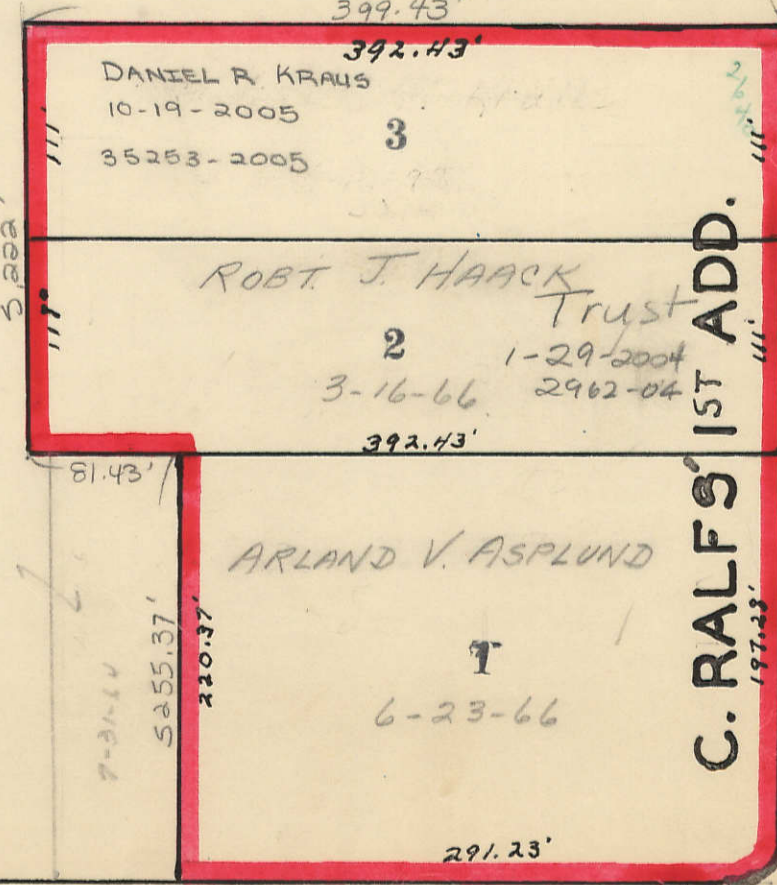
EMEIS ACRES L.C.
34818-06

CITY LIMITS JAN. 22, 1958

21



W. GARFIELD ST.



W. CENTRAL PARK AVENUE

33' 33'
78.24
28.70
12-1585
27.40
12-1586
27.40

EAST LINE SECTION 19-78-3 WISCONSIN AVENUE

T-20

17



39

E. 1/4 Corner SEC. 19