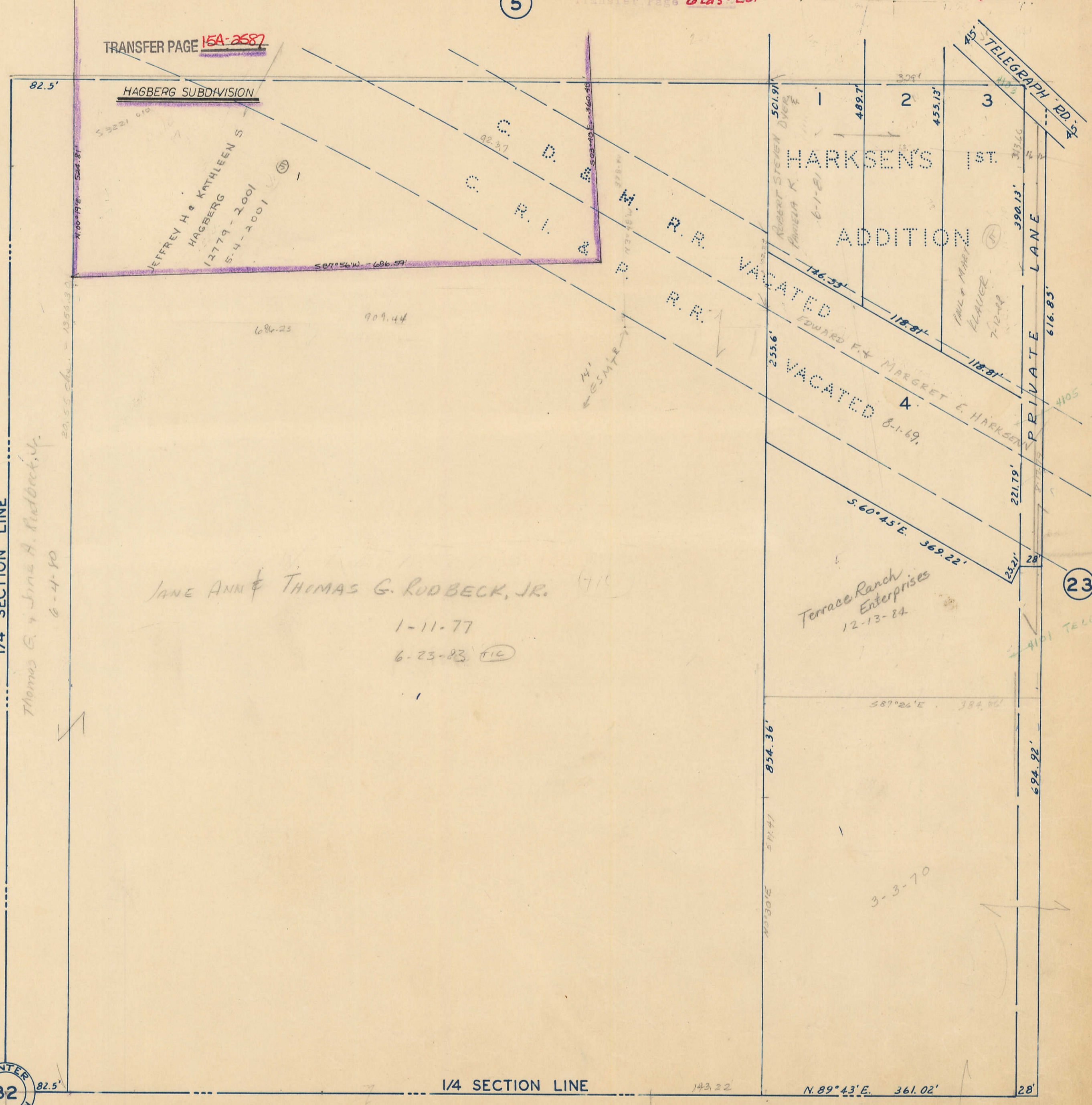


5

Transfer Page 6Lds-201

16TL-881

TRANSFER PAGE 15A-2687



JANE ANN & THOMAS G. RODBECK, JR.

1-11-77

6-23-83 (TIC)

Terrace Ranch Enterprises
12-13-84

1/4 SECTION LINE

1/4 SECTION LINE

CENTER SECTION 32

R-32

37

R-32

38

SEE ROCKINGHAM VOL. 8