

S-29

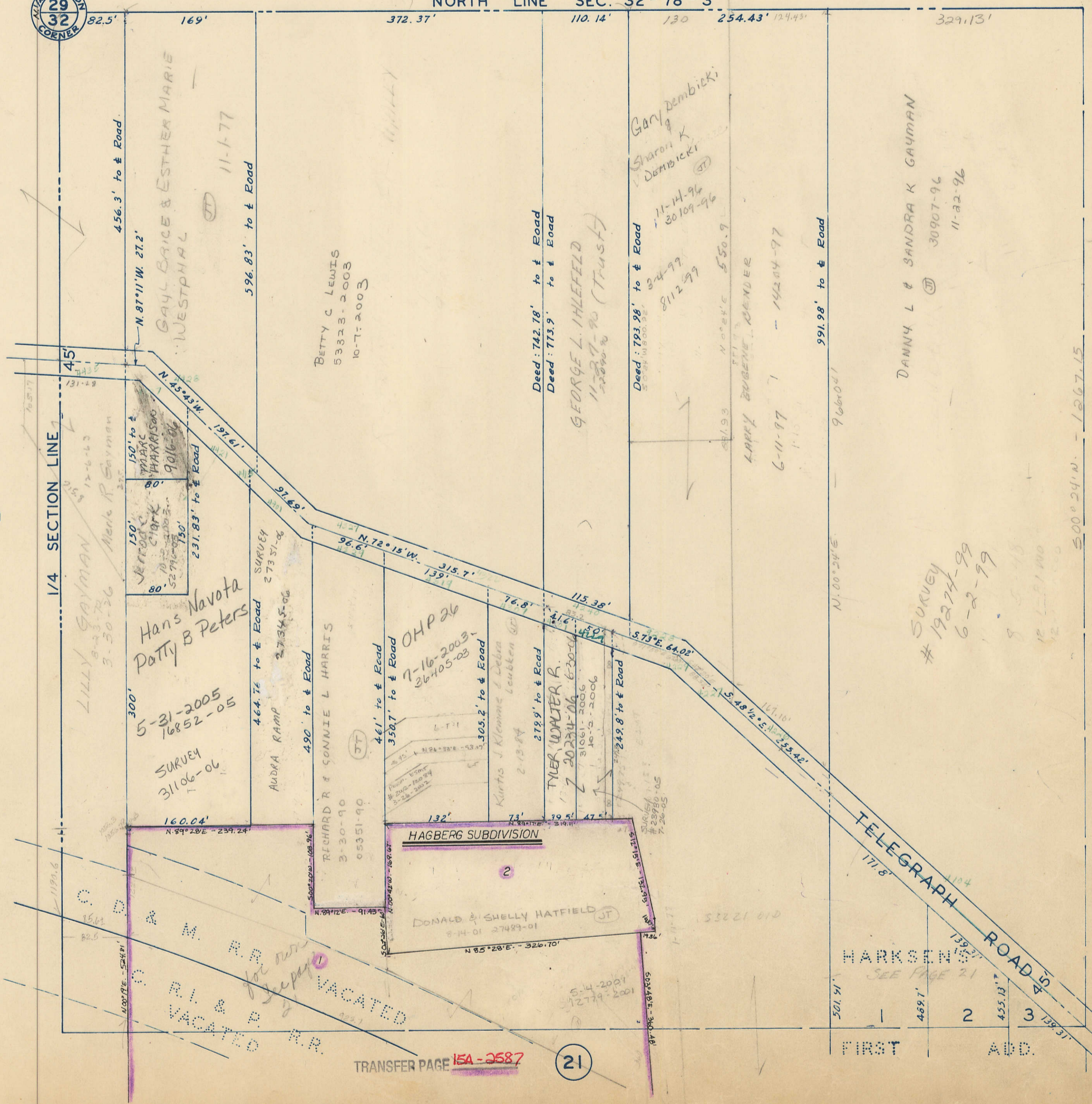
53

Transfer Page 62ds-201

1/4 SECTION
29
32
CORNER

N. 1/4 Corner SEC. 32

NORTH LINE SEC. 32-78-3



3

7

TRANSFER PAGE 15A-2587

21

501.91'	469.7'	455.12'	139.37'
FIRST		ADD.	

SURVEY # 19274-99
6-2-99

500°24'N - 1267.15