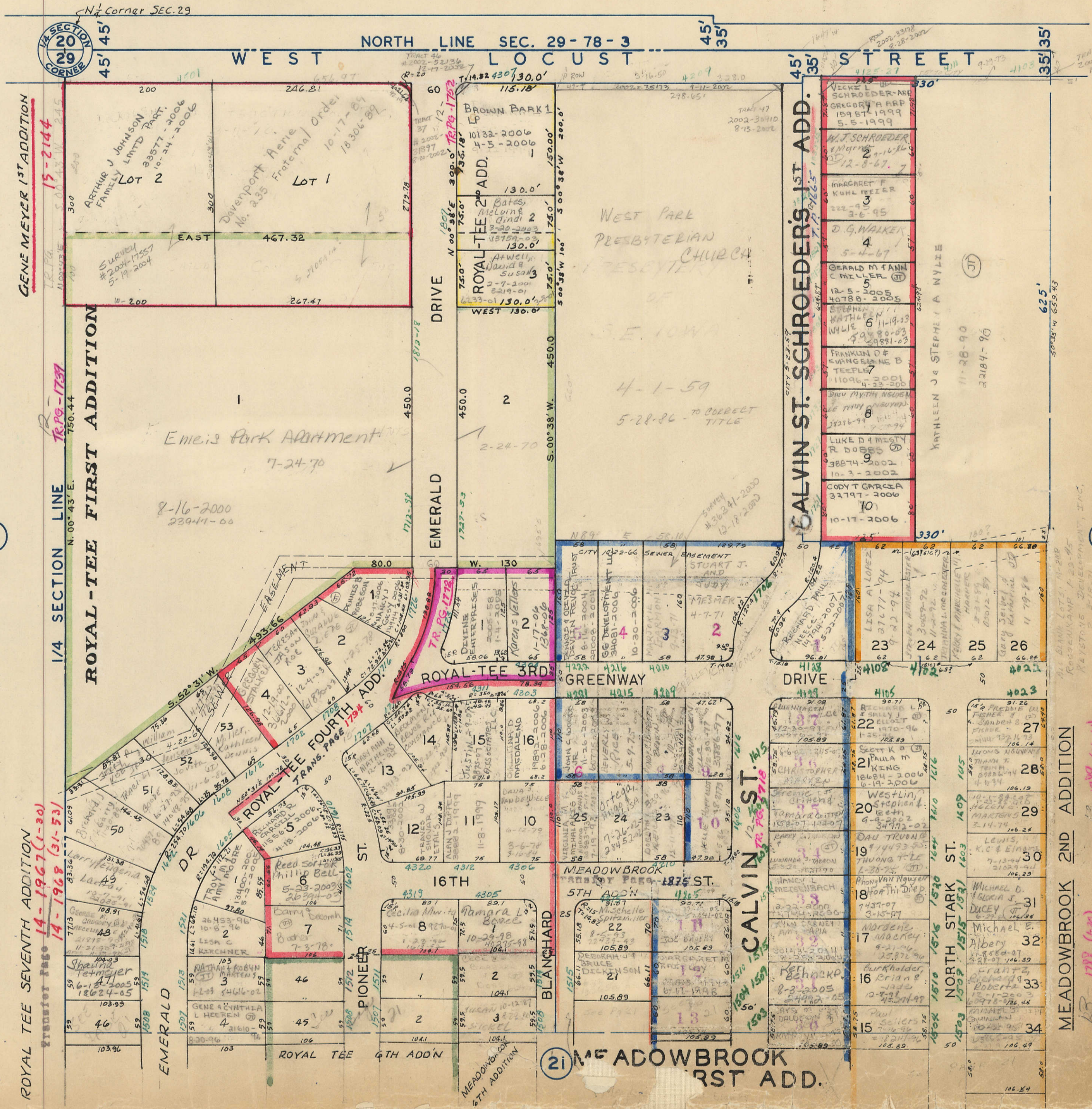


T-20

53

64-198



GENE MEYER 1ST ADDITION

ROYAL-TEE FIRST ADDITION

ROYAL TEE SEVENTH ADDITION

CALVIN ST. SCHROEDERS 1ST ADD.

CALVIN ST.

MEADOWBROOK 1ST ADD.

MEADOWBROOK 2ND ADDITION

20
29
CORNER

3

7

21

ALL PLANS: ROYAL TEE 1ST
CHILD'S CONSTRUCTION CO.
3-11-70

Childs
5-11-70

14-1967(1-30)
14-1968(31-53)

13-1789(1-10)
13-1789(11-44)

N 1/4 CORNER SEC. 29
WEST NORTH LINE SEC. 29-78-3
WEST LOCUST STREET

LOT 2
ARTHUR J JOHNSON
FAMILY LMTD PART.
83577-2006
10-34-2006

LOT 1
Davenport Aerie Order
No. 235 Fraternal Order
10-17-89
18306-89

Emerald Park Apartment
7-24-70
8-16-2000
239411-00

BROWN PARK 1
LP
10132-2006
4-5-2006

ROYAL-TEE 2ND ADD.
Bates, Melvyn
David
18754-03
130.0'

ROYAL-TEE 3RD
DENVER CENTERPRISES
1-4-2005

ROYAL-TEE FOURTH ADD.
TRANS. PAGE 1794

WEST PARK
PRESBYTERIAN
CHURCH

EMERALD DRIVE
450.0
450.0

GREENWAY DRIVE
4203
4205
4209

MEADOWBROOK 1ST ADD.
1875 ST.

MEADOWBROOK 2ND ADDITION

VECKE L
SCHROEDER-ARR
GREGORY A ARR
15987-1999
5-5-1999

MARGARET F
KUHLEFEEER
222-9
2-6-95

GERALD M FANN
C MILLER
12-5-2005
40780-2005

LUKE D MISTY
R DOBBS
38874-2002
10-3-2002

CODY T GARCIA
32797-2006
10-17-2006

LISA A LOPEZ
37677-94
4-7-94

WESTLIN
STEPHEN
18684-2006
6-19-2006

KATHLEEN J & STEPHEN A NYLIE
11-28-90
22184-96

STUART J.
AND
JUDY
MIESNER
4-7-71

REED SORTER
Phillip Bell
5-23-2003
26391-03

DAU TRUONG
19-14493-90
7-13-94

PHONY VAN NGUYEN
1875 ST.
1875 ST.

MICHAEL D.
GLORIA J.
DUCEY
6-27-94

MICHAEL E.
Albery
4-28-07
106.39