

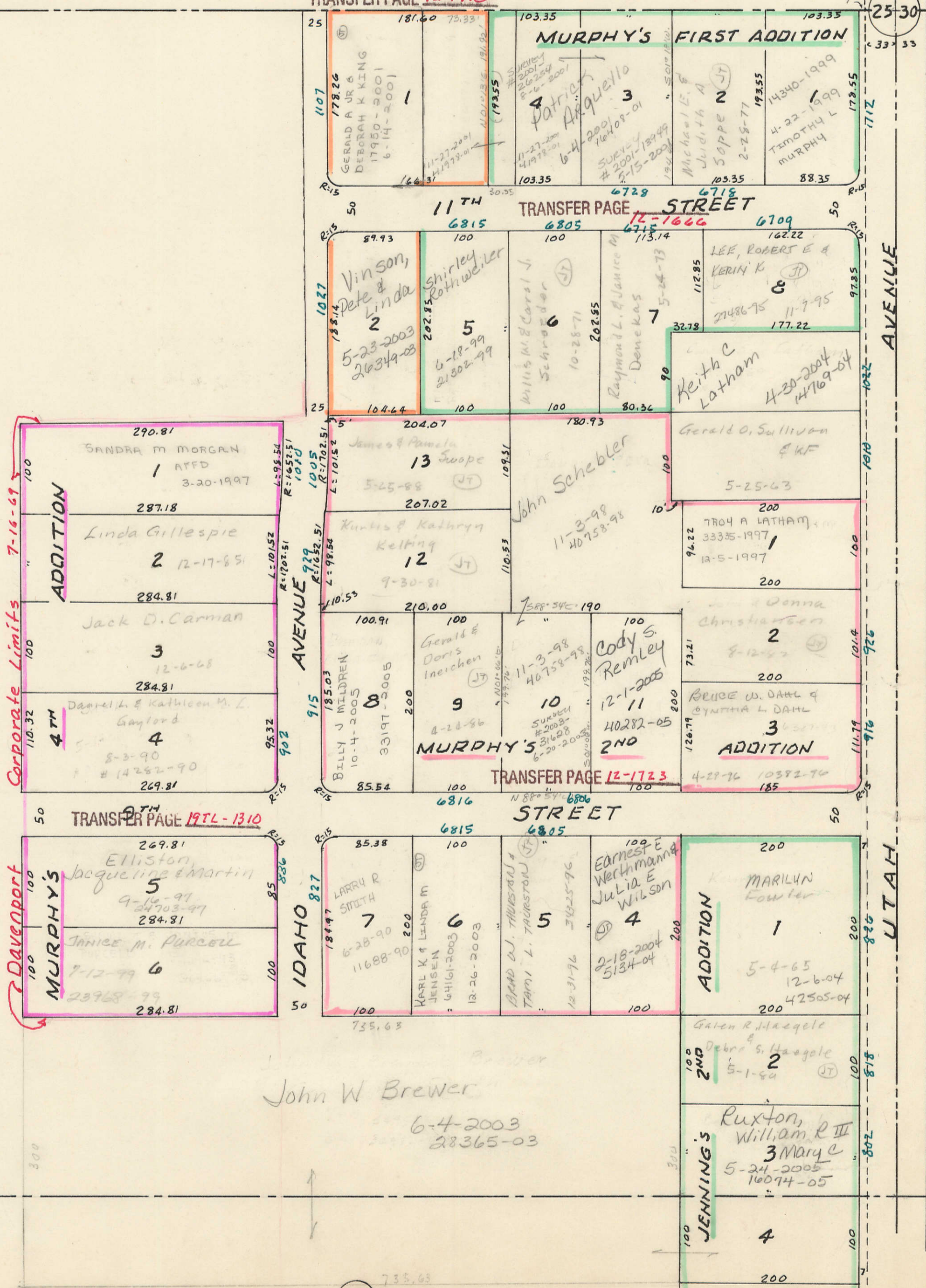
23

MURPHY'S  
3RD ADD'N.  
TRANSFER PAGE 12-1710

TRANSFER PAGE 51d-56  
E. 1/4 Corner SEC. 25

BLUE GRASS TOWNSHIP  
NW 1/4 NE 1/4 SEC 35-78-2

See Blue Grass Township



SEC. 30

33

55

TRANSFER PAGE 11-1537