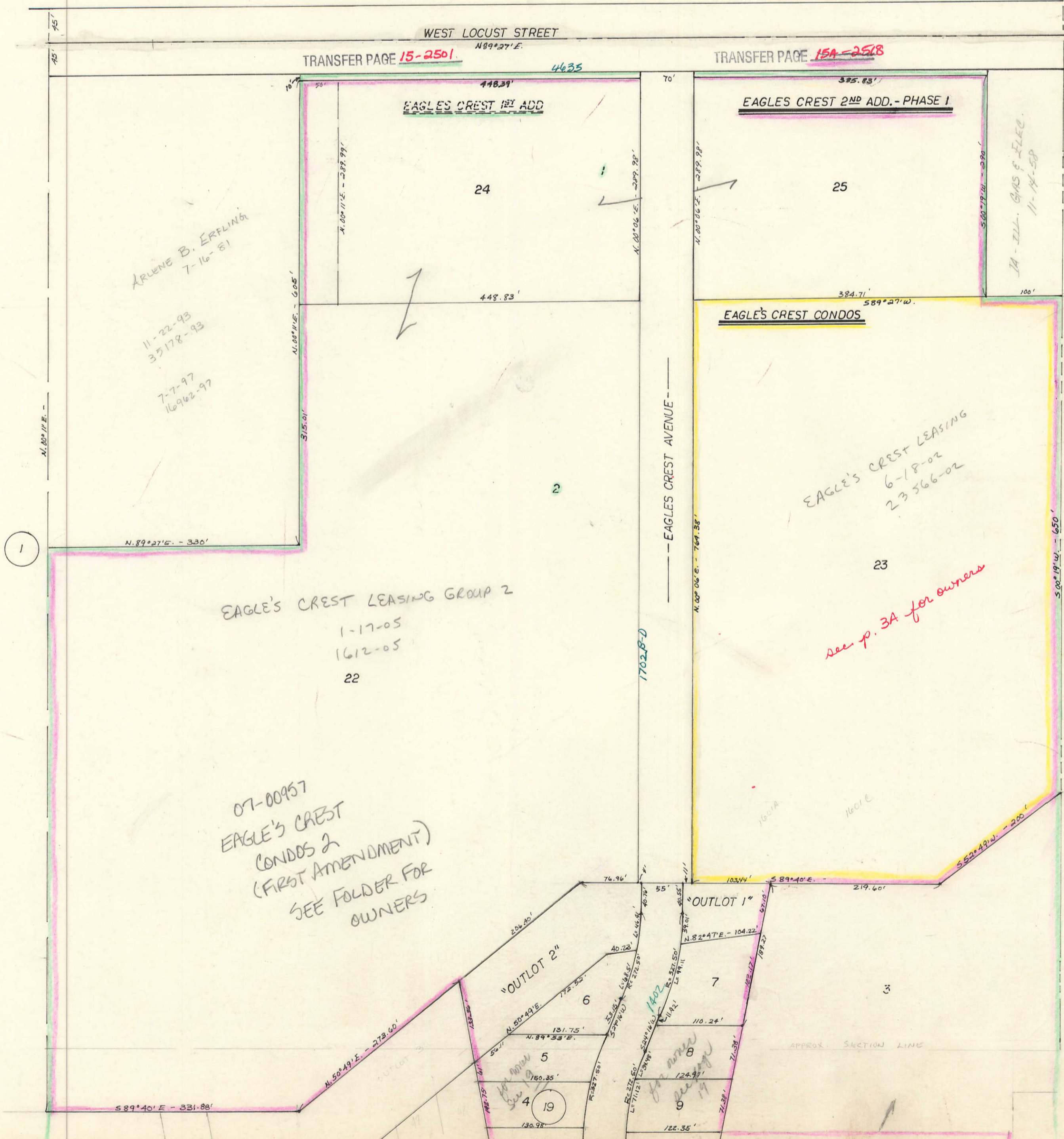


T-20

51

TRANSFER PAGE ~~61d-198~~



EAGLE'S CREST CONDOS
(LOT 23 EAGLE'S CREST 2ND ADD. PHASE 1)

TRANSFER PAGE 15A-2582

#2003-51964
9-25-2003

1601A

3-16-04

1. EAGLE'S CREST LEASING GROUP I 8541-04
- 2.
- 3.
- 4.
- 5.
- 6.
- 7.
- 8.
- 9.
- 10.
- 11.
- 12.

1601D

1. Eagle's Crest Leasing Group
2. 11-12-2002
3. 45548-02
- 4.
- 5.
- 6.
- 7.
- 8.
- 9.
- 10.
- 11.
- 12.

1701A

1. Eagle's Crest Leasing Group
2. 11-12-2002
3. 45548-02
- 4.
- 5.
- 6.
- 7.
- 8.
- 9.
- 10.
- 11.
- 12.

1701D

3-16-04

1. EAGLE'S CREST LEASING GROUP I 8541-04
- 2.
- 3.
- 4.
- 5.
- 6.
- 7.
- 8.
- 9.
- 10.
- 11.
- 12.

1601B

1. Eagle's Crest Leasing Group
2. 11-12-2002
3. 45548-2002
- 4.
- 5.
- 6.
- 7.
- 8.
- 9.
- 10.
- 11.
- 12.

1601E

1. EAGLE'S CREST LEASING GROUP I
2. 7-22-03
3. 37841-03
- 4.
- 5.
- 6.
- 7.
- 8.
- 9.
- 10.
- 11.
- 12.

1701B

3-16-04

1. EAGLE'S CREST LEASING GROUP I 8541-04
- 2.
- 3.
- 4.
- 5.
- 6.
- 7.
- 8.
- 9.
- 10.
- 11.
- 12.

1701E

1. EAGLE'S CREST LEASING GROUP I
2. 7-22-03
3. 37841-03
- 4.
- 5.
- 6.
- 7.
- 8.
- 9.
- 10.
- 11.
- 12.

1601C

3-16-04

1. EAGLE'S CREST LEASING GROUP I 8541-04
- 2.
- 3.
- 4.
- 5.
- 6.
- 7.
- 8.
- 9.
- 10.
- 11.
- 12.

1601F

1. EAGLE'S CREST LEASING GROUP I
2. 7-22-03
3. 37841-03
- 4.
- 5.
- 6.
- 7.
- 8.
- 9.
- 10.
- 11.
- 12.

1701C

3-16-04

1. EAGLE'S CREST LEASING GROUP I 8541-04
 - 2.
 - 3.
 - 4.
 - 5.
 - 6.
 - 7.
 - 8.
 - 9.
 - 10.
 - 11.
 - 12.
 - 13.
 - 14.
 - 15.
 - 16.
 - 17.
 - 18.
 - 19.
 - 20.
 - 21.
 - 22.
 23. OFFICE
- (UNITS 1-23 1ST AMENDMENT CHANGE #2003-41706 8-8-2003)
#2003-51364 9-25-2003

1701F

3-16-04

1. EAGLE'S CREST LEASING GROUP I 8541-04
- 2.
- 3.
- 4.
- 5.
- 6.
- 7.
- 8.
- 9.
- 10.
- 11.
- 12.

1701G

1. Eagle's Crest Leasing Group
2. 11-12-2002 45548-02
- 3.
- 4.
- 5.
- 6.
- 7.
- 8.
- 9.
- 10.
- 11.
- 12.

1701G

1. EAGLE'S CREST LEASING GROUP I 8541-04
2. 9-25-2003 51365-2003
- 3.
- 4.
- 5.
- 6.
- 7.
- 8.
- 9.
- 10.
- 11.
- 12.

Blank to
EAGLE'S CREST LEASING LLC
6-18-02
23566-02