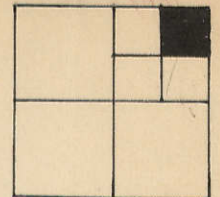


NOTE: Locust St. was established a Territorial Road 70' wide, 35' each side of Sec. line.
See Scott Co. Road Record Book #2, pages 24, 26, +27.

N.E. 1/4, N.E. 1/4
SEC. 29-78-3
SCALE: 1 in. = 100 ft.



7

Glds-198

T-20

55

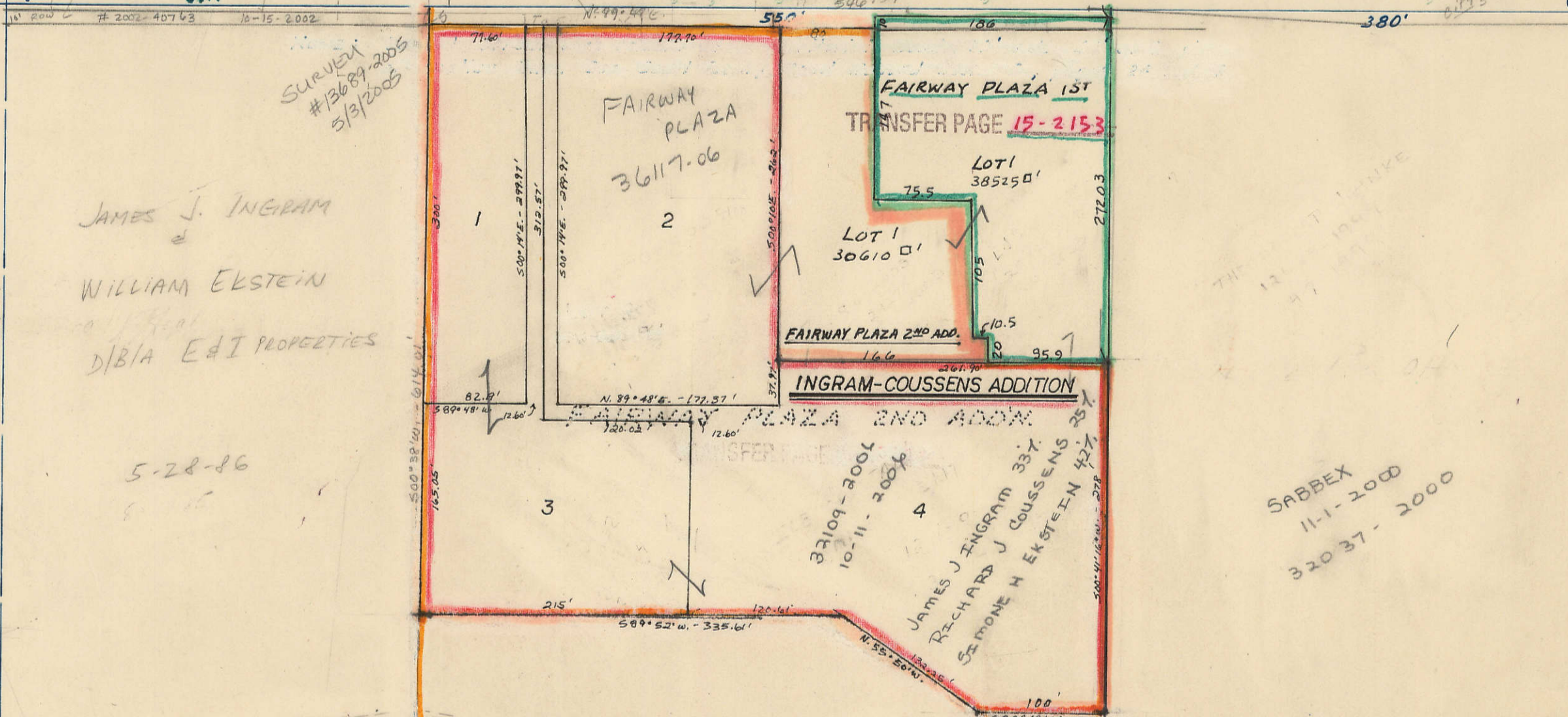
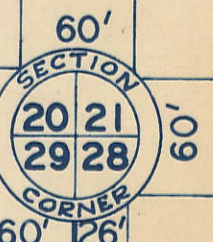
T-20

57

TRANSFER PAGE 15-2154

TRANSFER PAGE 15A-2153

35' 35' WEST NORTH LINE SEC. 29-78-3 EAST LOCUST STREET 35' 35'



5

I-28



Thanks to
Karlson Dural Corp
3-20-01

MEADOWBROOK NINTH ADDITION
TRANSFER PAGE 14-2085

23 MEADOWBROOK TENTH ADDITION
TRANSFER PAGE 14-2087

TRANSFER PAGE 15A-21601

(Lots 1-16)
G. DEAN FARRELL
7-9-91
14393-91