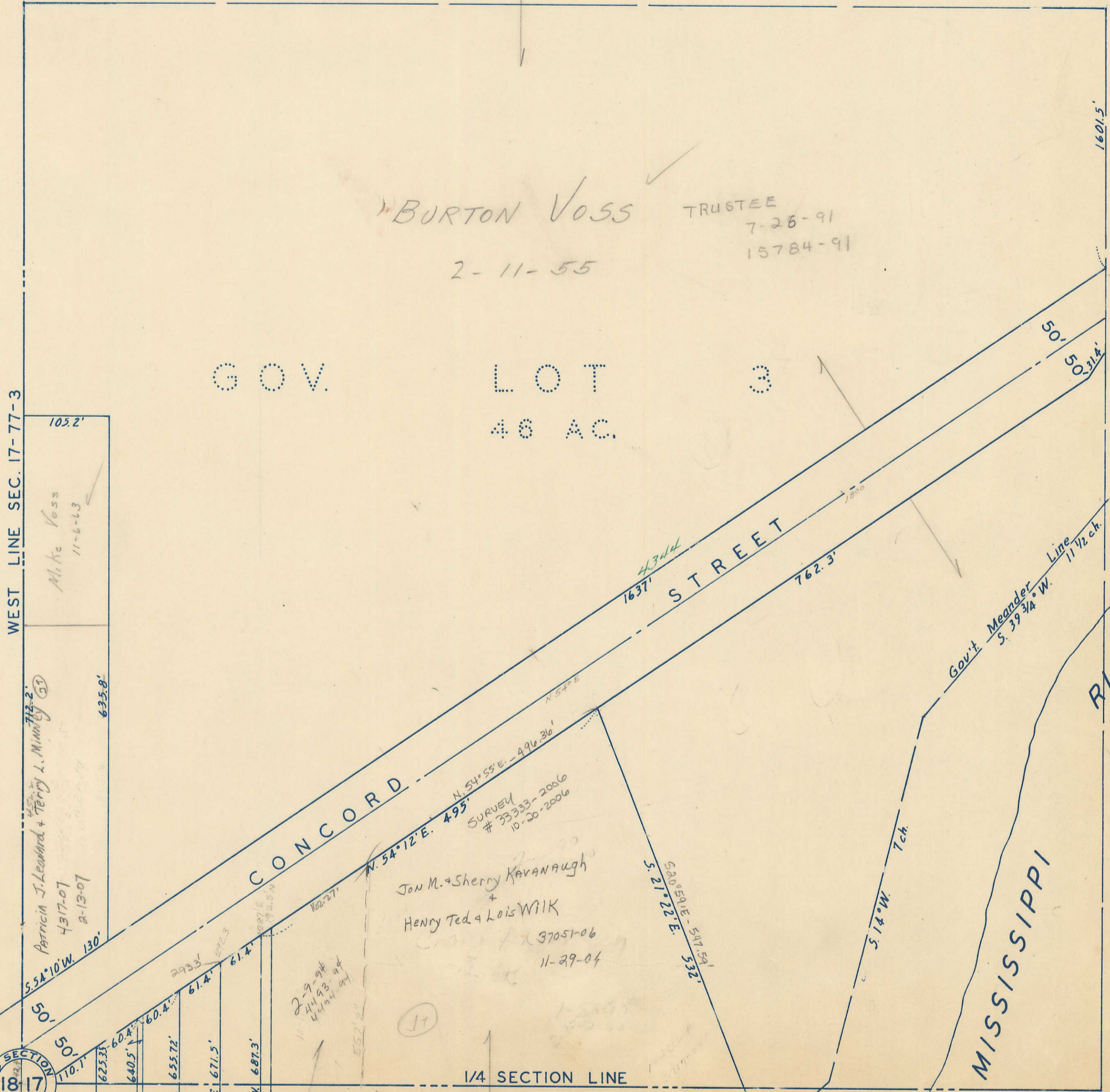


Transfer Page 82ds-420

1



BURTON VOSS
TRUSTEE
7-26-91
15784-91
2-11-55

GOV. LOT 3
48 AC.

WEST LINE SEC. 17-77-3

R3-18

23

Mike Voss
11-6-63

Patricia J. Leonard + Terry L. Mumby
4-17-07
2-13-07

Jon M. + Sherry KAVANAUGH
+
Henry Ted + Lois WILK
37051-06
11-29-04

Gov't Meander Line
S. 39 3/4° W.
1 1/2 ch.

MISSISSIPPI RIVER

1/4 SECTION CORNER
1817

1/4 SECTION LINE

33

19