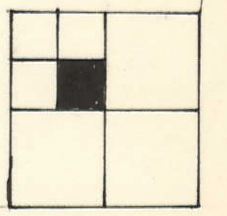


3

TRANSFER PAGE 814s-418



SURVEY  
#03724-2000  
2-10-2000

NAHANT MARSH EDUCATION CENTER  
1-2-02  
47691-01

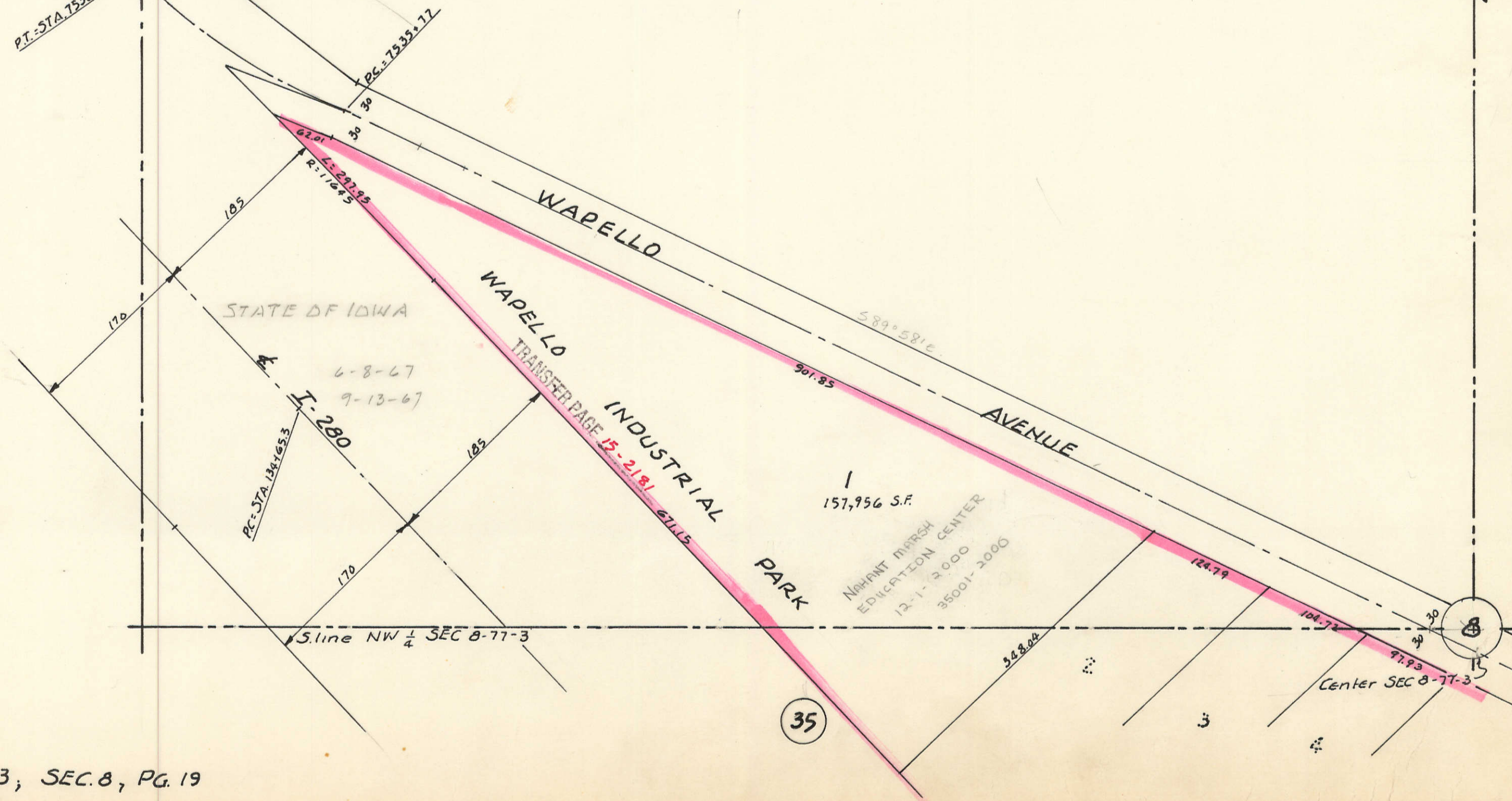
E. Wapello Ave. RELOCATED  
PT. STA. 7539+27

17

E. line NW 1/4 SEC 8-77-3

VOL. SEC 8

21



35