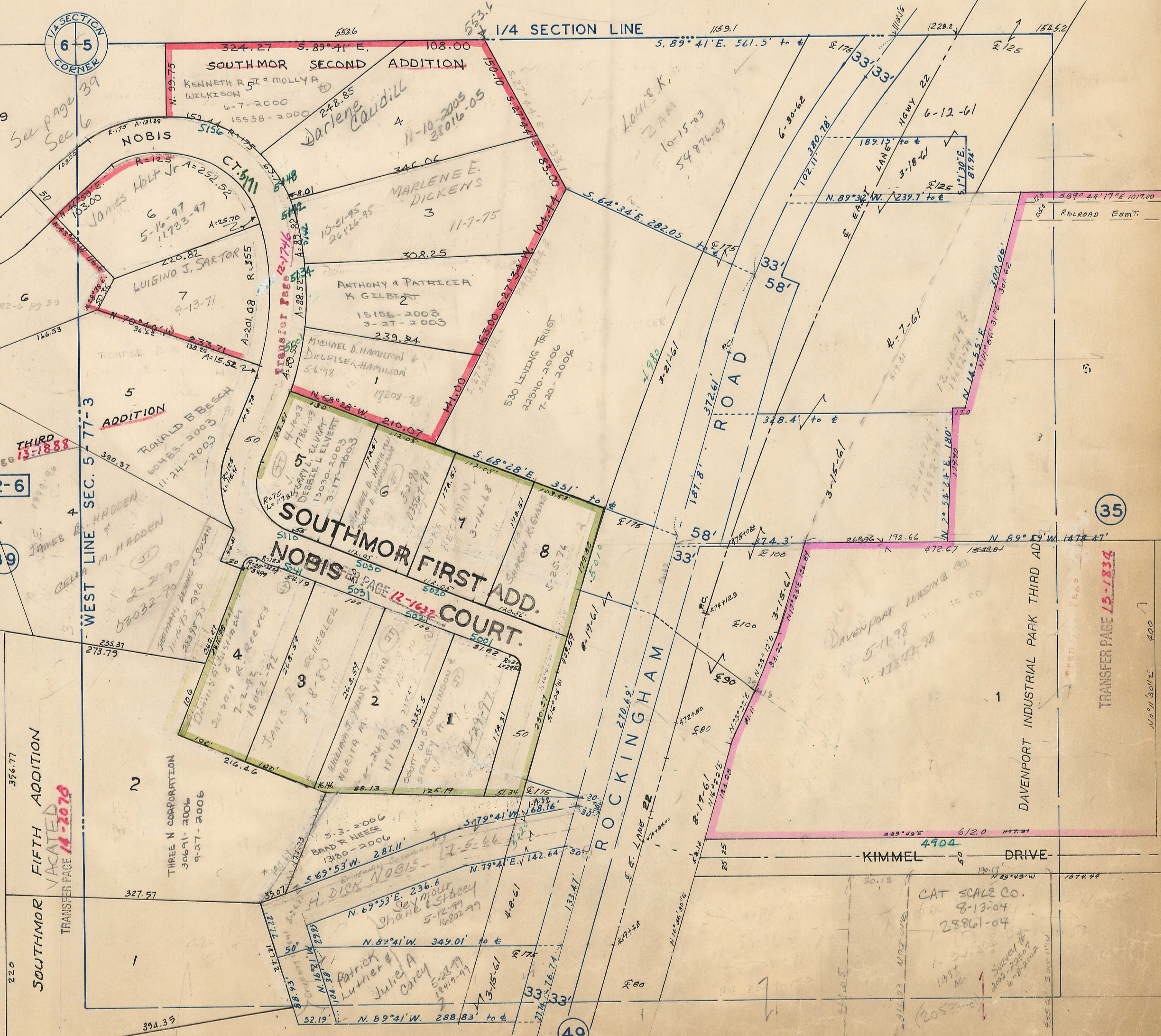


17

8Lds-415

VI SECTION CORNER  
6 5



See page 39  
Sec 6

Transfer Page 13-1888  
R2-6

39

SOUTH MOR  
FIFTH ADDITION  
VACATED  
TRANSFER PAGE 14-2070

SOUTH MOR FIRST ADD.  
NOBIS COURT  
TRANSFER PAGE 12-1632

35

TRANSFER PAGE 15-1834

49

+ Dim 5/8 190.61 per Survey BK 102 P. 501  
Southmor 5th Add Vacated Plat Dim 174.73 in total