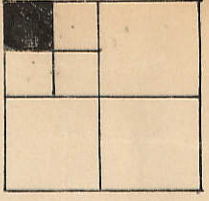


N.W. 1/4, N.W. 1/4
SEC. 5-77-3
SCALE: 1 in. = 100 ft.

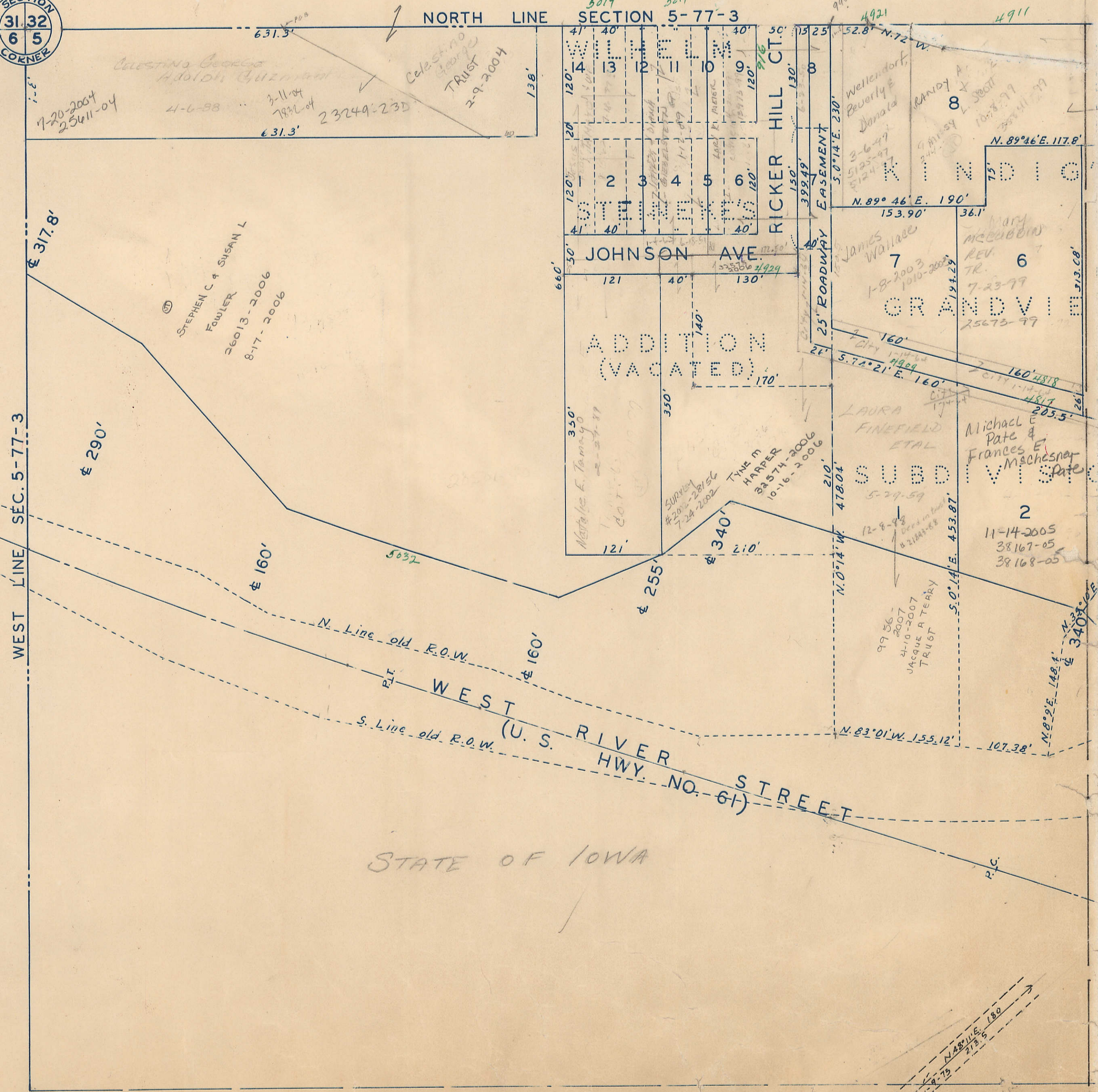


R2-32

49

Transfer Page **Blds-415**

SECTION
31 32
6 5
CORNER



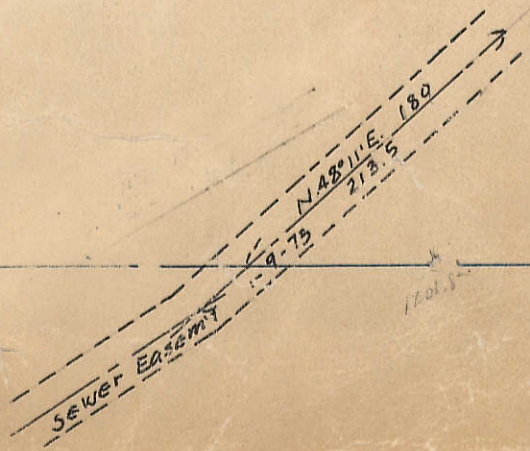
R2-6

7

WEST LINE SEC. 5-77-3

STATE OF IOWA

17



Celestino George
Adolpho Guzman
Trust
2-9-2004

STEPHEN C & SUSAN L
FOWLER
26013-2006
8-17-2006

JOHNSON AVE
ADDITION (VACATED)

RICKER HILL CT.

WELLENDORF,
BEVERLY E
DONATA
3-6-99
5125-99
5124-99

JAMES WALLACE
1-8-2003
1010-2003

LAURA
FINEFIELD
ETAL

JACQUE A TEARY
TRUST
9956-
2007
4-10-2007

MICHAEL E
PATE &
FRANCES E
MACHESNEY

GRANDVIEW W

2
11-14-2005
38167-05
38168-05

SEWER EASEMENT
NABLINE 180
1-9-73
2135