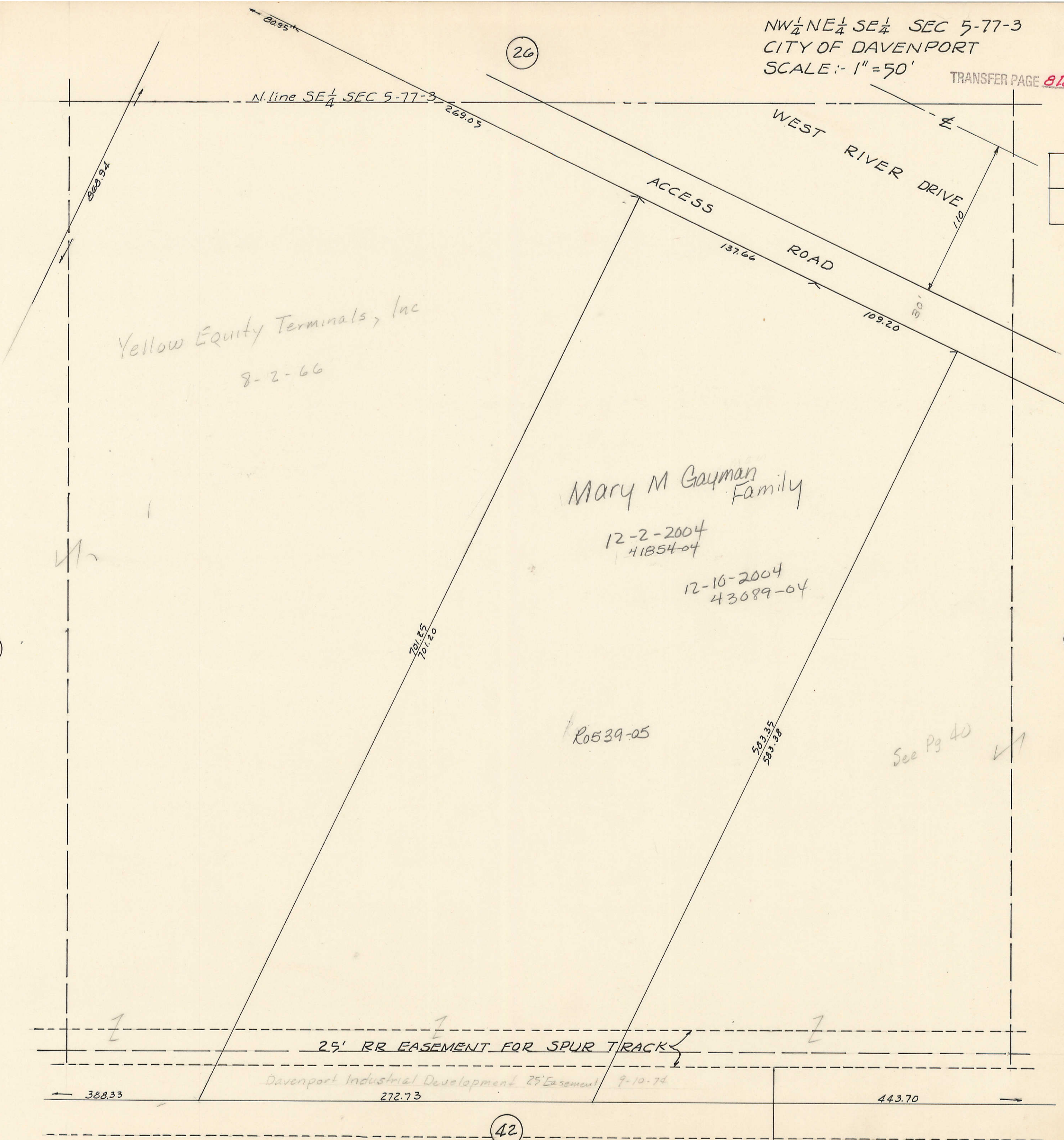


(26)



N. line SE 1/4 SEC 5-77-3 269.05

WEST RIVER DRIVE
110

ACCESS ROAD
137.66

109.20

Yellow Equity Terminals, Inc
8-2-66

Mary M Gayman Family

12-2-2004
41854-04

12-10-2004
43089-04

701.85
701.20

503.35
503.38

R0539-05

See Pg 40

(38)

(40)

25' RR EASEMENT FOR SPUR TRACK

Davenport Industrial Development 25' Easement 9-10-74

388.33

272.73

443.70

(42)

