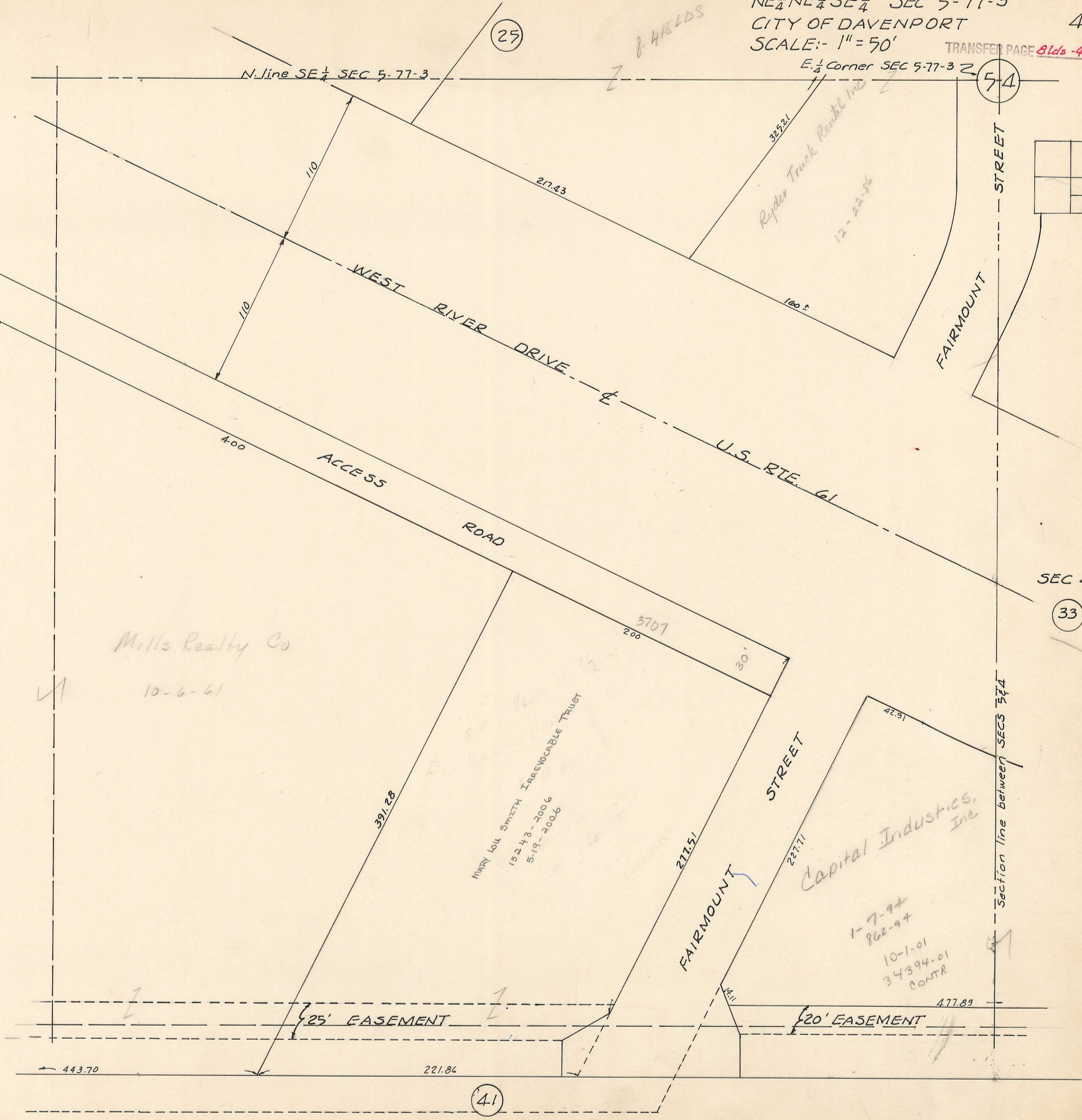
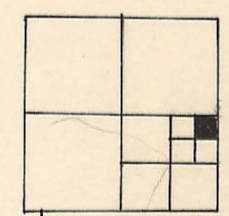


(25)

(54)

N. line SE 1/4 SEC 5-77-3

E. 1/4 Corner SEC 5-77-3



(39)

SEC 4

(33)

Mills Realty Co
10-6-61

MARY LOU SMITH IRREVOCABLE TRUST
15243-2006
519-2006

Capital Industries, Inc
1-7-94
862-94
10-1-01
34394-01
CONTR

25' EASEMENT

20' EASEMENT

(41)

Section line between SECS 34 & 4

583.35
583.78

110

110

400

217.43

32521

12-22-86

160.5

3707

200

30'

391.28

217.51

STREET

FAIRMOUNT STREET

227.71

42.91

443.70

221.84

477.89

8-415LDS