

ASHFORD CONDOMINIUMS
(A REPLAT OF LOT 1 RYDE HIGH ADD.)

1ST AMENDMENT
#12021-2005
4-19-2005

2ND AMENDMENT
#10415-2006
4-6-2006

BLDG. A

- 1. MICHAEL & KAREN S DOSLAND <sup>(JD) 5-19-2006
15255-2006</sup>
- 2. DAVID F ROBINSON <sup>5-2-2005
13405-2005</sup>
- 3. JEANETTE SWINGIE <sup>8-16-2005
26591-2005</sup>
- 4. Hansen, Daniel & Susan <sup>10-27-05
36195-05</sup>
- 5. KERRY HUME & SELF DECL TRUST <sup>21034-2005
6-30-2005</sup>
- 6. _____
- 7. _____
- 8. _____
- 9. MARY BETH CAMPANA <sup>3-28-05
9058-05</sup>
- 10. Bryan Kammer <sup>2-3-06
3559-06
3560-06</sup>
- 11. _____
- 12. _____

BLDG. B

- 1. RECHARD M COBBIN <sup>13590-2005 5-3-2005
(JD) 14903-2005
5-12-2005</sup>
- 2. JOHN K & MARY E MEHUS <sup>8-8-2005
25631-2005</sup>
- 3. MADONNA J BACKSTROM ³³⁰⁷²⁻²⁰⁰⁶
- 4. JENNIFER P DIXON ¹⁰⁻¹⁹⁻²⁰⁰⁶
- 5. Sirois, Andrew L. ⁵⁻⁴⁻⁰⁵
- 6. CHAD HAMILTON ¹³⁸²⁶⁻⁰⁵
- 7. _____
- 8. _____
- 9. HEATHER FUERTGES <sup>4-20-05
12065-05</sup>
- 10. MARK J BRUVEEN <sup>13806-2005
5-4-2005</sup>
- 11. THOMAS W & MARY I DZIURGOT <sup>(JD) 29093-2005
9-2-2005</sup>
- 12. STEPHEN P JONES <sup>15564-2005
5-18-2005</sup>

BLDG. C

- 1. Ryan Ostrander <sup>12-21-05
42755-05</sup>
- 2. LAVONNE STAPP ³⁹¹⁸²⁻⁰⁶
- 3. CLINTON W & ANDREA LENGLE <sup>(JD) 7-19-2006 22308-2006
3-19-07</sup>
- 4. Maggie B. Jenkins ⁷⁶⁶⁹⁻⁰⁷
- 5. ANDREW HOHMAN ²³³²⁵⁻⁰⁶
- 6. Cody R. Flatt ¹⁴⁰⁶¹⁻²⁰⁰⁶
- 7. _____
- 8. _____
- 9. Connie Yerington <sup>11-1-2005
36587-05</sup>
- 10. Elizabeth Gehle <sup>11-22-05
39228-05</sup>
- 11. DEE RAE & DALE VORTHERMS <sup>(JD) 7-18-2006
22217-2006</sup>
- 12. RASHIDA REHMAN <sup>20676-2006
7-5-2006</sup>

BLDG. D

- 1. HANNAH J DORFMUELLER ^{(JD) 13390-2006}
- 1. THOMAS E WILLIAMS ⁵⁻⁴⁻²⁰⁰⁶
- 2. Jeremy D. Spillman <sup>5-8-06
13611-06</sup>
- 3. Behrend, Ryan & Tabitha ¹⁴³⁸⁸⁻²⁰⁰⁶
- 4. Church, Beverly K. ¹⁴³⁵³⁻²⁰⁰⁶
- 5. Hergenrader, Sara & David G. ¹⁴⁶⁴³⁻²⁰⁰⁶
- 6. WILLIAM J. ESBAUER <sup>4-27-2006
12583-2006</sup>
- 7. KATE N WESTFALL <sup>5-17-2006
15067-2006</sup>
- 8. CECILIA A STRALOW <sup>5-8-2006
13711-2006</sup>
- 9. ERICA L HESKETT <sup>5-8-2006
13752-2006</sup>
- 10. Traci K Kammer ¹⁴⁰⁴⁹⁻²⁰⁰⁶
- 11. Klein, Kathryn & George ¹⁴¹⁷⁹⁻²⁰⁰⁶
- 12. Varilek, Joshua R. ¹⁸⁶¹¹⁻²⁰⁰⁶

46TH STREET PLAZA CONDOMINIUM

#22492-2006
7-20-2006
46TH STREET PLAZA LLC
BLANKS TO
15B

BLDG. 'A'

- 1 SHARON R BARCAL 10-17-2006
32844-2006
26576-2006
- 2 LYNDA D GUSTAFSON 8-23-2006
- 3
3043-07
- 4 LYNDA GUSTAFSON 2-1-07
- 5 RICKIE ANN LEE 38149-06 12-11-06
- 6 DANIEL S. EVANS 7950-07 3-21-07
- 7 BLAKE BERCHTOLD 8218-07
RICHARD J. WELLS 1481-07
- 8 DEBORAH M. CROUCH 1-16-07
ANDREW M. THOMPSON 1118-07
+ (JT)
- 9 EMILY A. ROGERS (JT) 1-11-07
- 10 ANDREA SOUZA 34971-06
- 11 CRAIG M STRIPLING ETAL'S 9-7-2006
32380-2006 28366-2006
- 12 TROY A TRICIA N HAGEN (JT) 10-12-2006
- 13

BLDG. 'B'

- 1
- 2
- 3
- 4
- 5
- 6
- 7
- 8
- 9
- 10
- 11
- 12
- 13

10

LYNGHOLM PARK 1ST ADDITION

16

TRANSFER PAGE 6lds 181
PARK 53 SECOND ADDITION

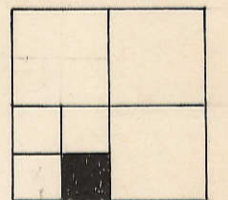
TRANSFER PAGE 15A-2326

TRANSFER PAGE 15A-2495

727.69

PARK 53RD 4TH ADD.

BLANKS TO:
Mel FOSTER INC.
9-17-77



Richard J. Ryan
7-21-2000
21240-00

SURVEY
#19226-2000
7-3-2000

GRAND ASHFORD - BDS LLC
9-26-2005
31973-2005

Lot 16 P1215-12B
22.02 AC

Rock Church
MINISTRIES INC
1-884 A
14070-2007
5-16-2007

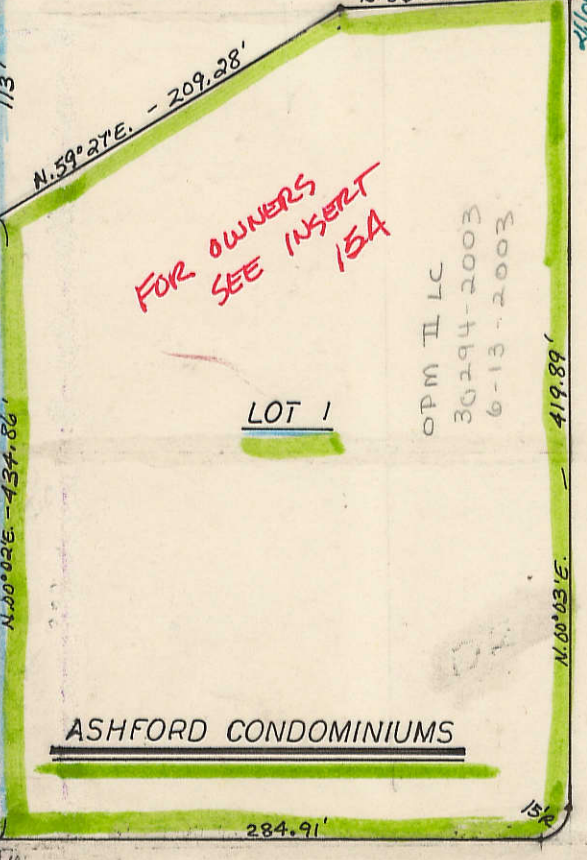
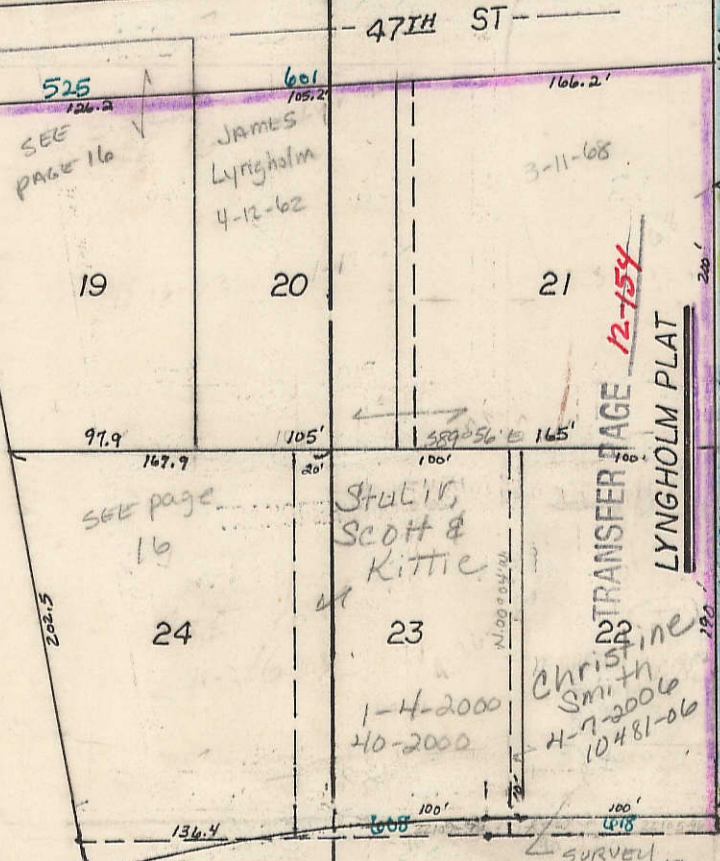
PUBLIC WORKS FACILITY 1ST ADD.

TRANSFER PAGE 15A-2362

14

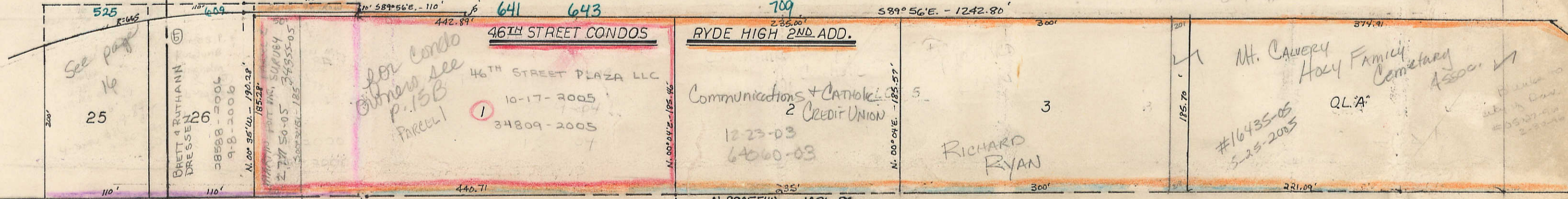
Jupiter Development
3-30-2005
9328-05

FOR OWNERS
SEE INSERT
15A



GRAND AVE.

46TH STREET



TRANSFER PAGE 15A-2584

TRANSFER PAGE 6lds-181

(DR. I. LANCERS OUTLOTS)

2

SEC 13