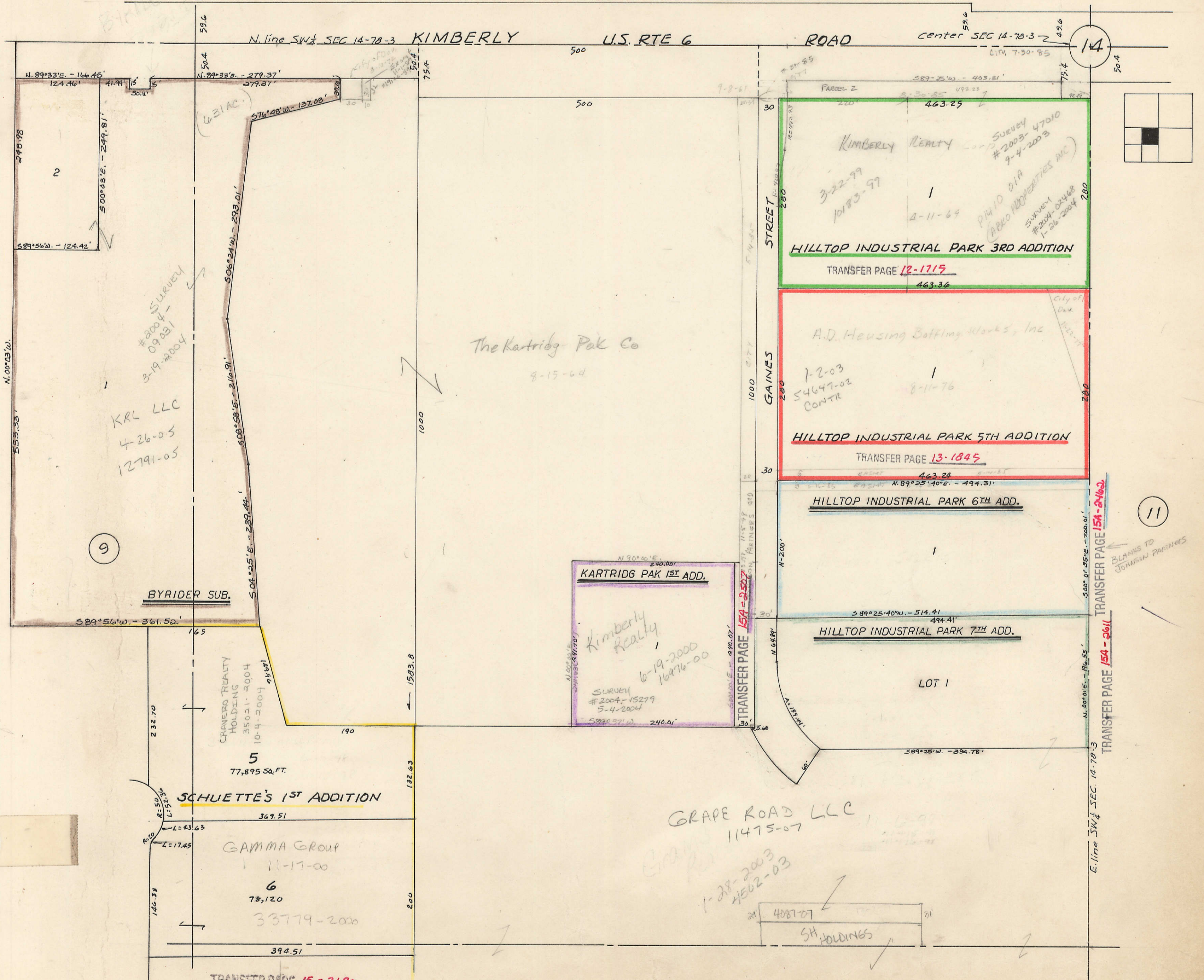


7



9

14

11

15

SURVEY
#2004-09-031
3-19-2004

KRL LLC
4-26-05
12791-05

BYRIDER SUB.

CRANERO REALTY
HOLDING
35021-2004
10-4-2004

SCHUETTE'S 1ST ADDITION

GAMMA GROUP
11-17-00

6
78,120
33779-2000

TRANSFER PAGE 15-2190

The Kartridg Pak Co
8-15-64

KARTRIDG PAK 1ST ADD.
Kimberly Realty
SURVEY
#2004-15279
5-4-2004
6-19-2000
16976-00

TRANSFER PAGE 154-2507

GRAPE ROAD LLC
11475-07

1-28-2003
4502-03

4087-07
SH HOLDINGS

KIMBERLY REALTY
SURVEY
#2003-47010
7-4-2003
3-22-99
10183-99
4-11-69
P1410 OIA
ARCO PROPERTIES INC
SURVEY
#2004-02468
1-26-2004

HILLTOP INDUSTRIAL PARK 3RD ADDITION
TRANSFER PAGE 12-1715
463.25
463.36

A.D. Housing Bottling Works, Inc
1-2-03
54647-02
CONTR
8-11-76

HILLTOP INDUSTRIAL PARK 5TH ADDITION
TRANSFER PAGE 13-1845
463.24

HILLTOP INDUSTRIAL PARK 6TH ADD.

HILLTOP INDUSTRIAL PARK 7TH ADD.

LOT 1

TRANSFER PAGE 154-2462

TRANSFER PAGE 154-2611

BLANKS TO
JONASIN PARTNERS