

TRANSFER PAGE 11-1512

HICKORY HILL 7TH

NE Corner SEC 21-78-3

Spellicich Homes, Inc

16 15

21 22

GEO. WASHINGTON BLVD

33

Section line between SECS 21 & 16
660.3

846.5

Susan L Houseman &
William A Schwader
7-22-2004
2601A-04

0A05-05A

19.7AC

3

N 87° 53' E - 152'

3.9AC
Rose,
David & Shirley
10-24-2005
35690-05

S 87° 53' W - 150.10'

150.1

David W Rose

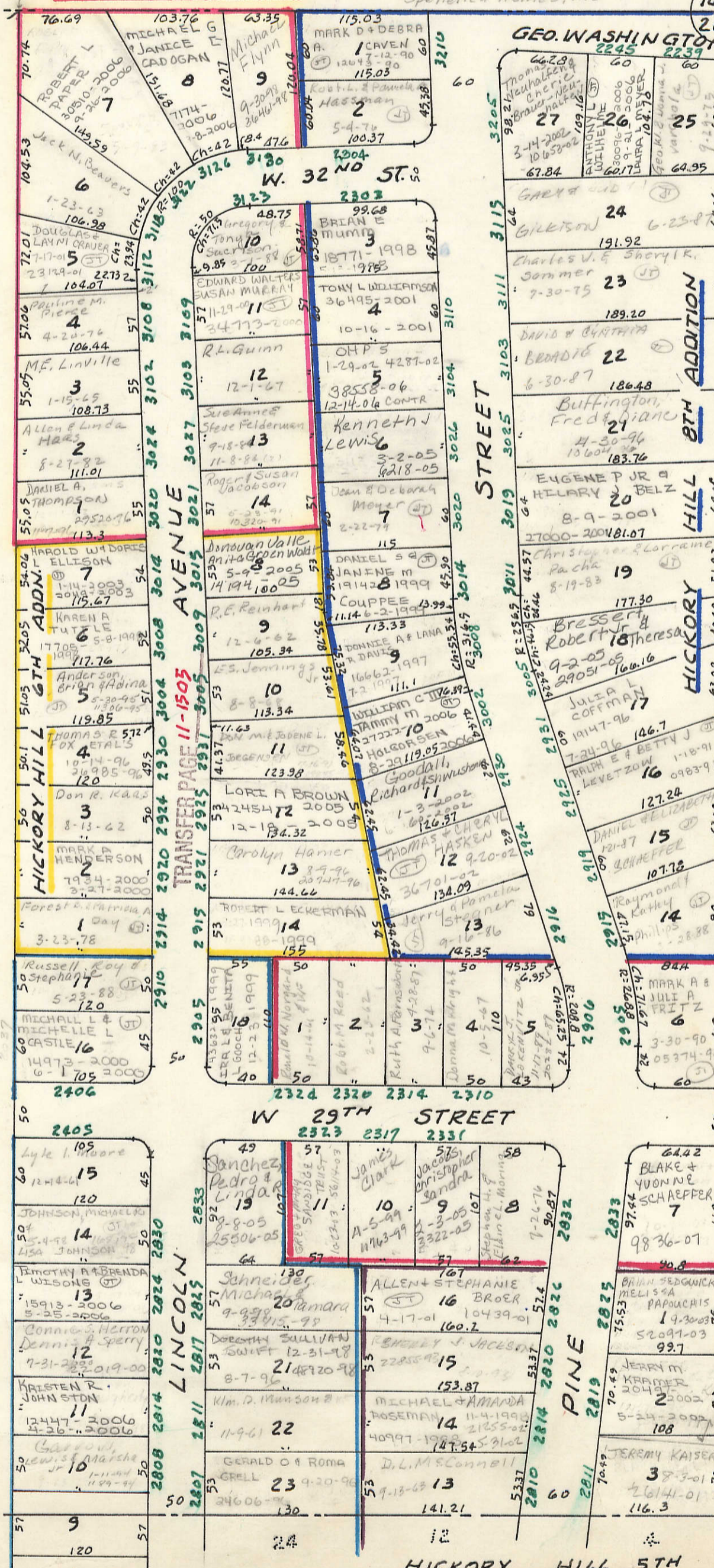
McKay Real
Estate Acquisition

5-29-2001
15557-01

H-3-2003
14277-03

502.4

694.6



5

TRANSFER PAGE 11-1482

TRANSFER PAGE 11-1511

TRANSFER PAGE 13-1813

VOL A

1

TRANSFER PAGE 11-1492