

INDIAN RIDGE CONDOS (PHASE I)

BLDG. 1

TRANSFER PAGE 15A-2389

BLDG. 2

- 101.
- 102.
- 103.
- 104.
- 105.
- 106.
- 107.
- 108.
- 109.
- 110.
- 111.
- 112.
- 113.
- 114.
- 115.
- 116.
- 117.
- 118.
- 119.
- 120.
- 121.
- 122.
- 123.
- 124.

- 201.
- 202.
- 203.
- 204.
- 205.
- 206.
- 207.
- 208.
- 209.
- 210.
- 211.
- 212.
- 213.
- 214.
- 215.
- 216.
- 217.
- 218.
- 219.
- 220.
- 221.
- 222.
- 223.
- 224.

TRANSFER PAGE 15-2189

PROFESSIONAL PARK EAST

T.P. 15-2189

146

Building 1 Condo

UNITS

- 1. GEM HOLDINGS 7 3342-2004 2-2-2004

- 2.

- 3. Pinger, Inc. 4939-07 2-20-07

Building 2

UNITS

- 1 SCOTT ALPEN 24359-06

- 2 SHELLEY M BAUSCH REVOC TRUST 27696-2001 8-15-2001 10811-2004

- 3 MARKA BELL REVOC TRUST 4-1-2004

#20027-2006
6-28-2006

Professional Park East Bldg #2 Condos
2nd Amendment

* Amended Area removed from Unit #1 and added
to unit #3

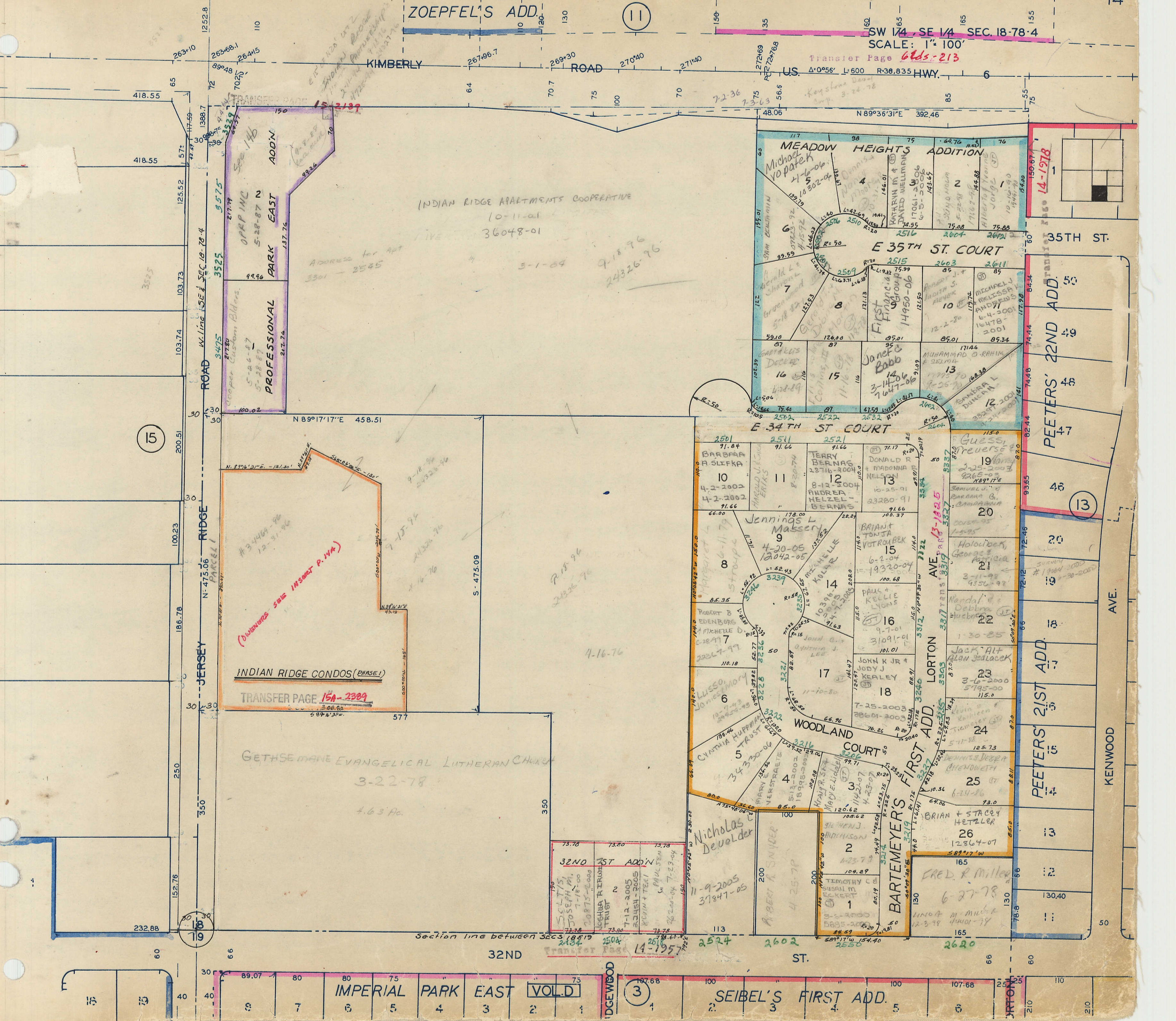
ZOEPFEL'S ADD.

SW 1/4, SE 1/4 SEC. 18-78-4

SCALE: 1" = 100'

Transfer Page 645-213

US. Δ°056' L: 600 R: 38,835 HWY. 6



15

13

19

3

Section line between SECS 18-19

Transfer Page 14-1957

INDIAN RIDGE CONDOS (PHASE I)
TRANSFER PAGE 15A-2389

PROFESSIONAL PARK EAST
OPPING INC
5-28-87 N
3525 3575
3475
Cooper Custom Bldg.
5-26-87
5-28-87

INDIAN RIDGE APARTMENTS COOPERATIVE
10-11-01
36048-01
3-1-89
9-18-96
24326-96

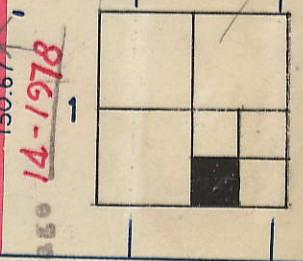
MEADOW HEIGHTS ADDITION

E 35TH ST. COURT

E 34TH ST. COURT

WOODLAND COURT

BARTEMEYER'S FIRST ADD.



35TH ST.

PEETERS' 22ND ADD.

PEETERS' 21ST ADD.

PEETERS' 21ST ADD.

PEETERS' 21ST ADD.

PEETERS' 21ST ADD.

AVE.

KENWOOD

GETHSEMANE EVANGELICAL LUTHERAN CHURCH
3-22-78
4.63 Ac.

32ND ST ADDN

73.78	73.20	73.78
SELTZ, JOSEPH M.	TRUST	TRUST
7-18-00	7-18-00	7-18-00
20875-0000	20875-0000	20875-0000
7-12-2005	7-12-2005	7-12-2005
24451-2005	24451-2005	24451-2005
KEVIN + TERE	KEVIN + TERE	KEVIN + TERE
26220-04	26220-04	26220-04
7-23-04	7-23-04	7-23-04
2434	2434	2434

Transfer Page 14-1957

IMPERIAL PARK EAST

SEIBEL'S FIRST ADD.