

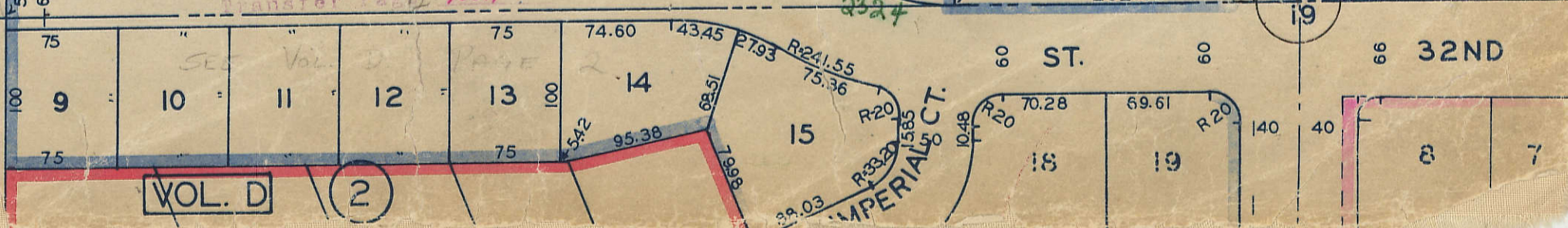
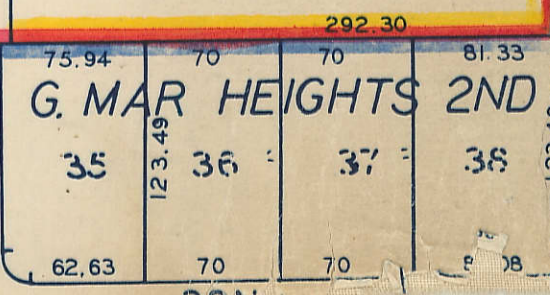
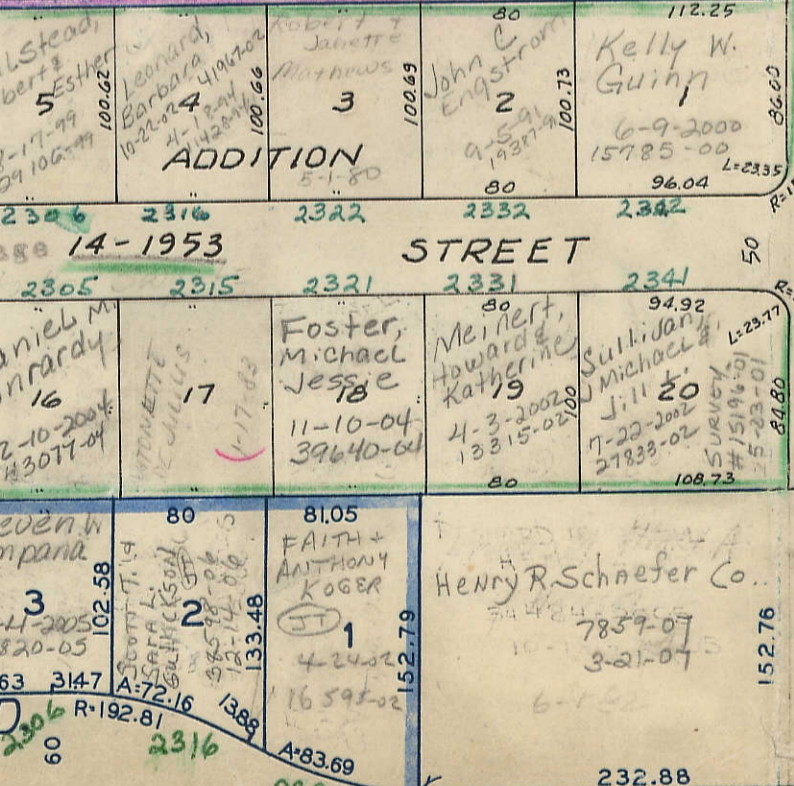
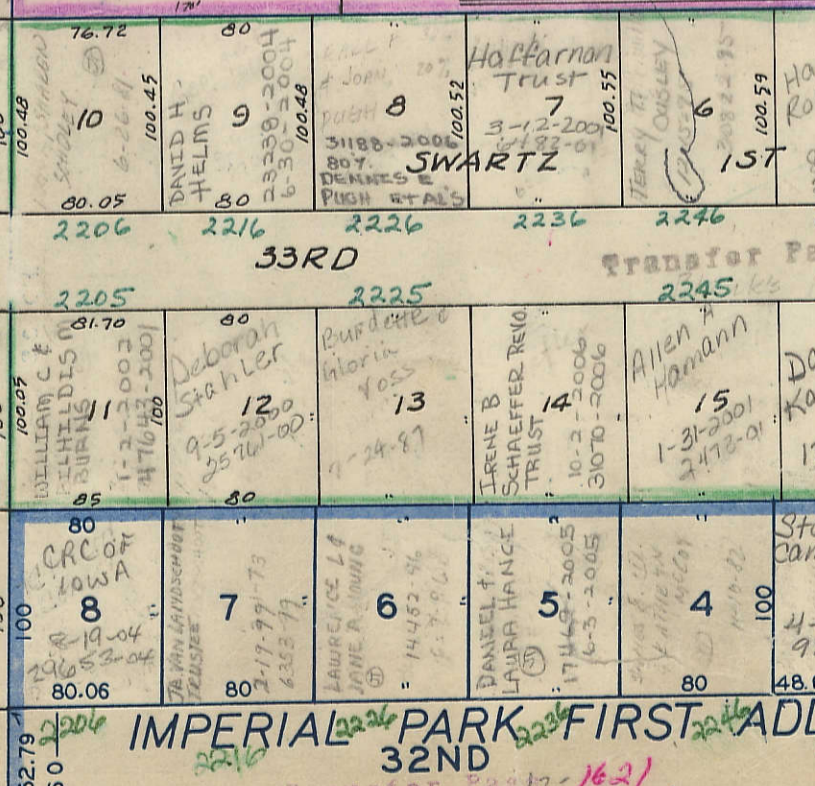
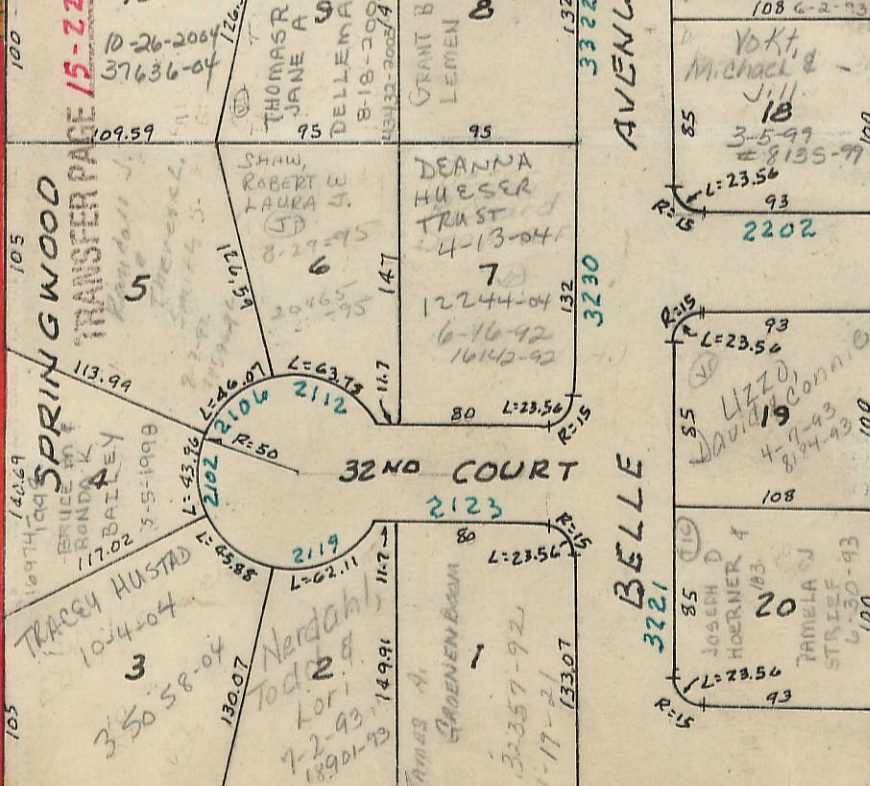
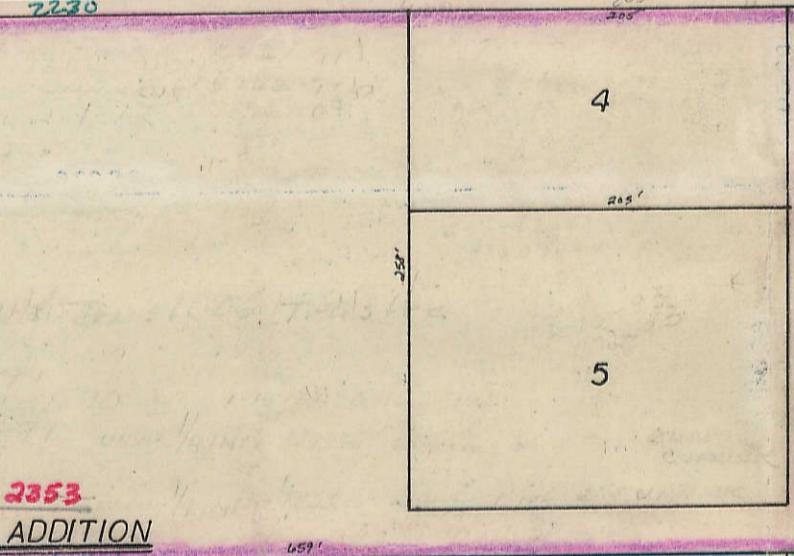
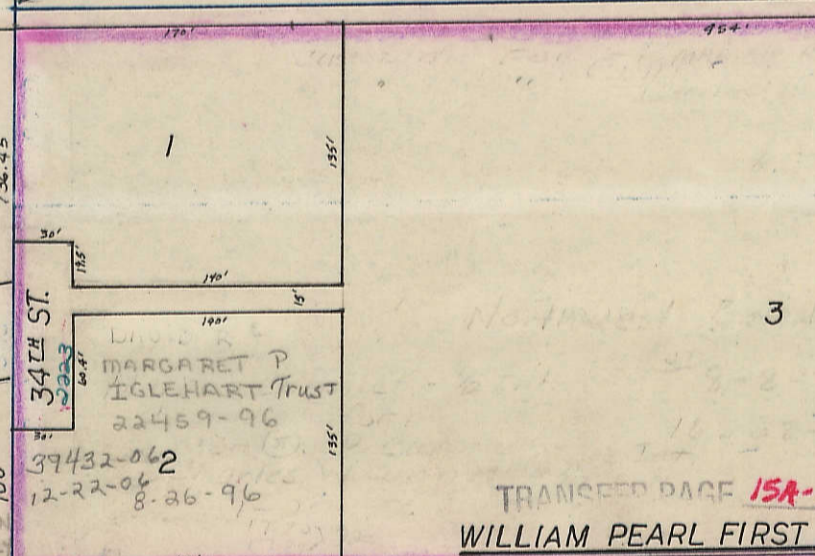
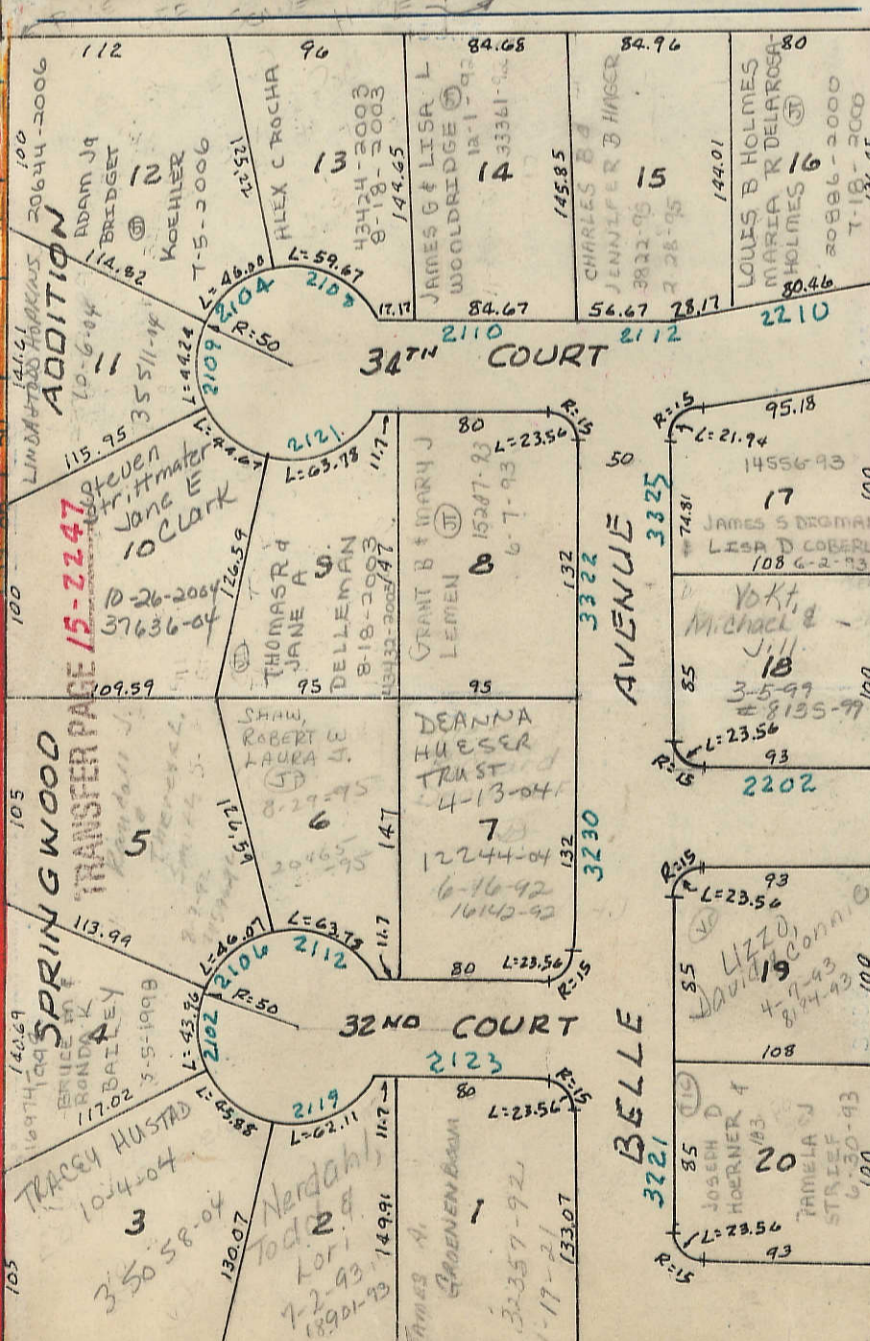
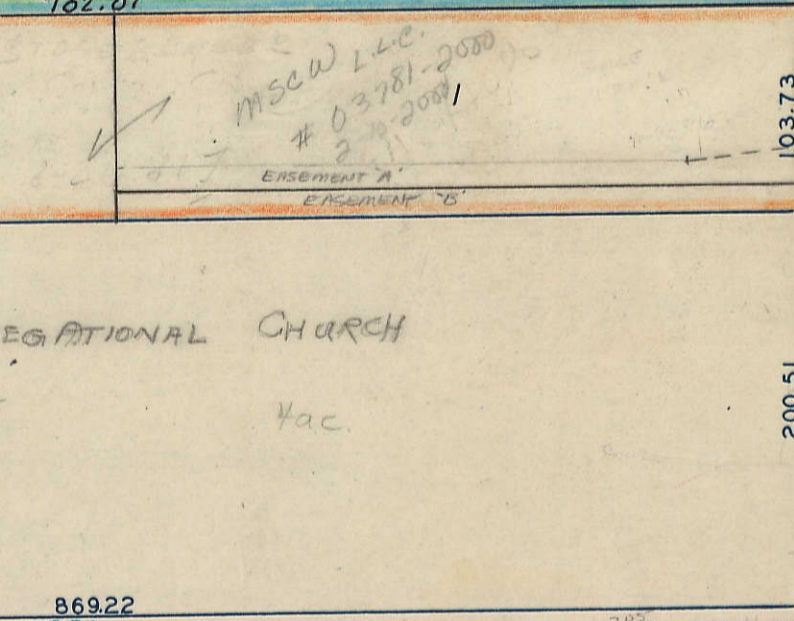
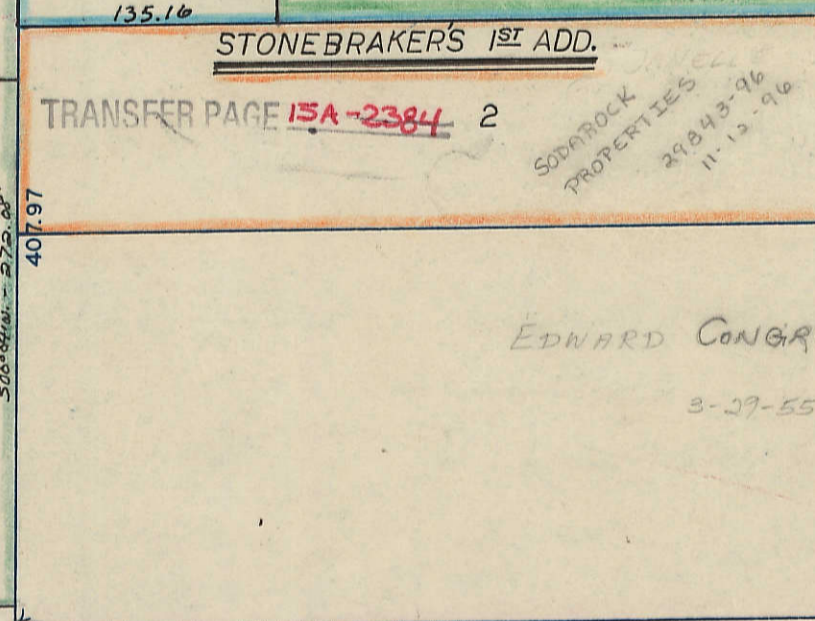
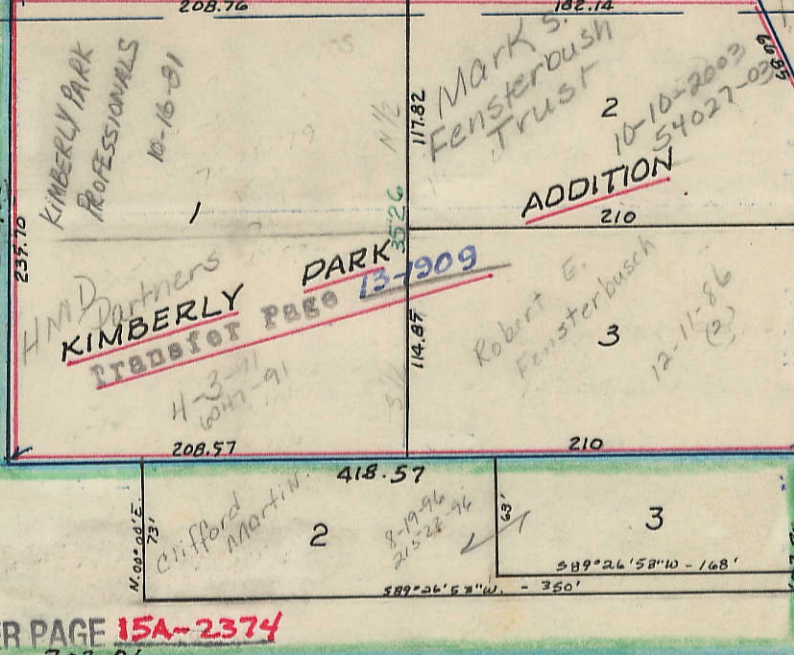
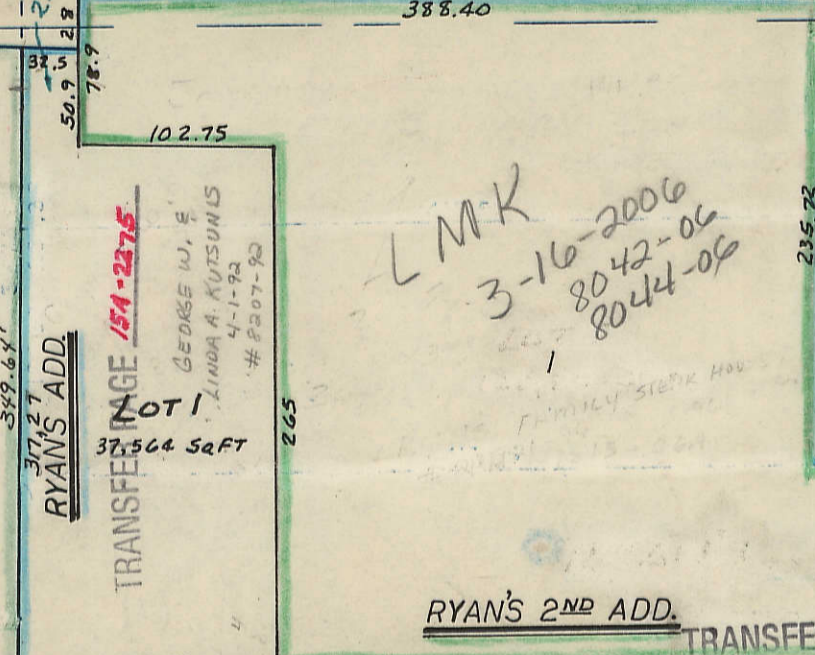
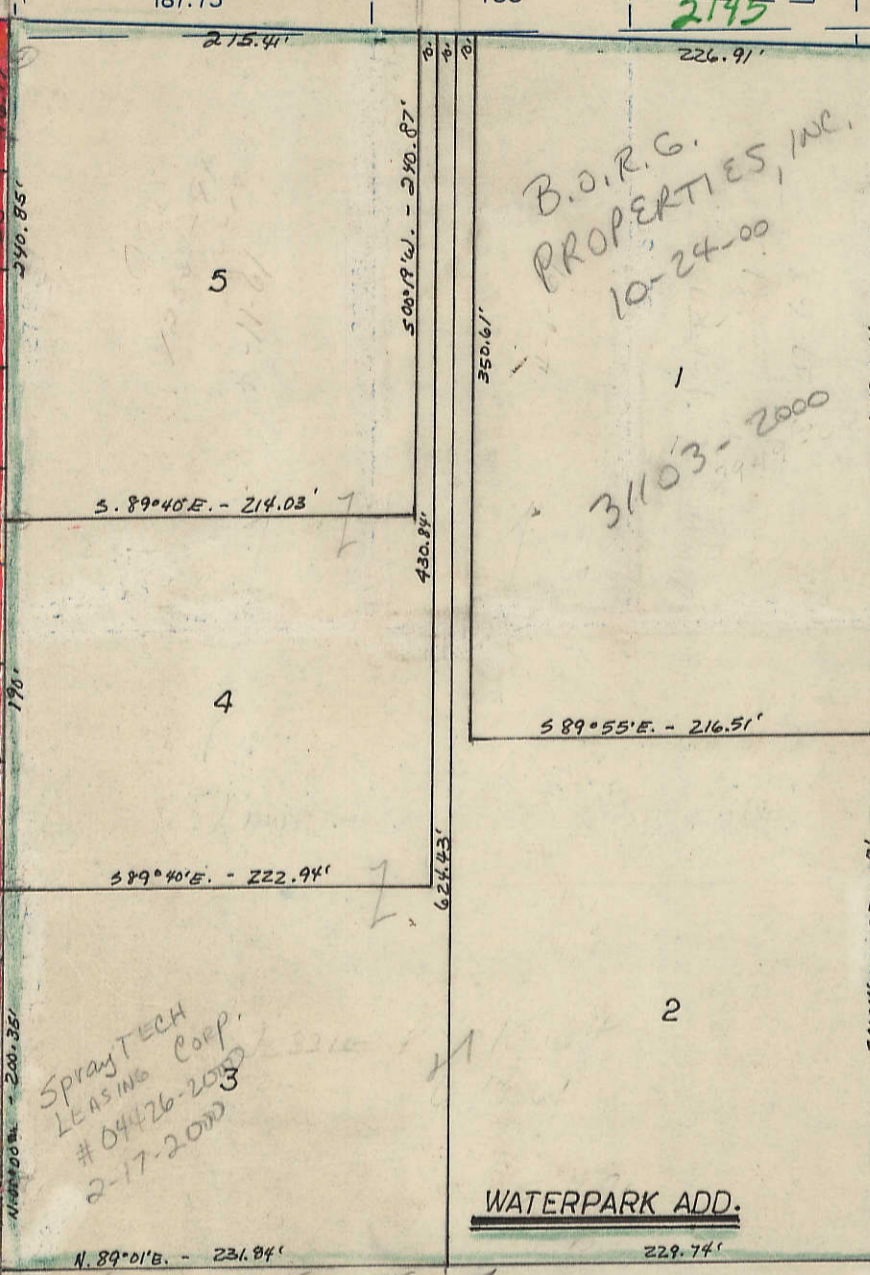
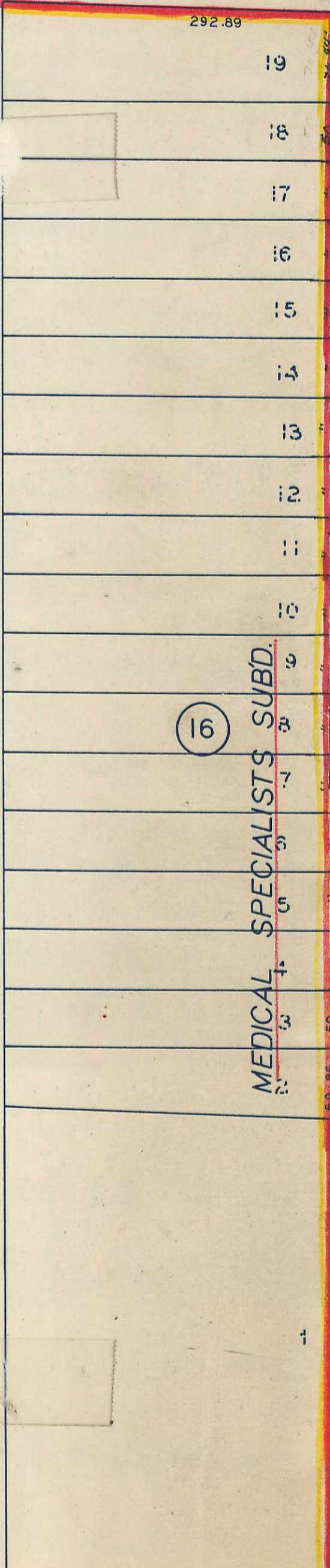
150  
135  
140  
153  
140  
153  
153  
110  
15

PI 1249+50 Δ0°24.5' RT.  
L=600 R=84,196.61  
PC 1252+22.7  
KIMBERLY ROAD NEW U.S. HWY. 6

MEDICAL SPECIALISTS SUBD.

16

14



THE RETREAT AT EASTERN AVENUE  
CONDOMINIUMS

#2003-60452  
11-22-2003

BLDG. 1

- 1. Roland H Hill Parking Space 5-19-2004  
1687 17421-04
- 2. Sandra K. McCauley 596 11181-06  
4-14-2006 5-3-04
- 3. EVELYN M. GRADY TRUST 15133-04  
4-18-2005
- 4. Dixie J. Ledley 11685-05  
8-26-2004 30397-2004 (JT)
- 5. CHARLES T + PATRICIA A WILLIAMS (JT) 2093-2005
- 6. JOHN + LEORA M DEMETER 1-21-2005
- 7.
- 8. ALICE E ZUIDERVEEN 10-18-2006  
32935-2006

BLDG. 2

- X.101
- X.102
- X.103
- X.104
- 5. 201 BETTY J CONWAY TRUST 5-17-2007  
14375-2007 3-8-07
- 6. 202 Peter H. DeKock 6729-07
- 7. 203
- 8. 204

BLDG. 3

- 1.
- 2.
- 3.
- 4.
- 5.
- 6.
- 7.
- 8.

- 301
- 302
- 303
- 304
- 401
- 402
- 403
- 404