

SE 1/4, SW 1/4 SEC. 17-78-4
SCALE: 1" = 100'

TRANSFER PAGE 61ds-212

10

16

BETT.

74 D-17

53

INTERSTATE

CITY LIMITS

1922

ROAD

30

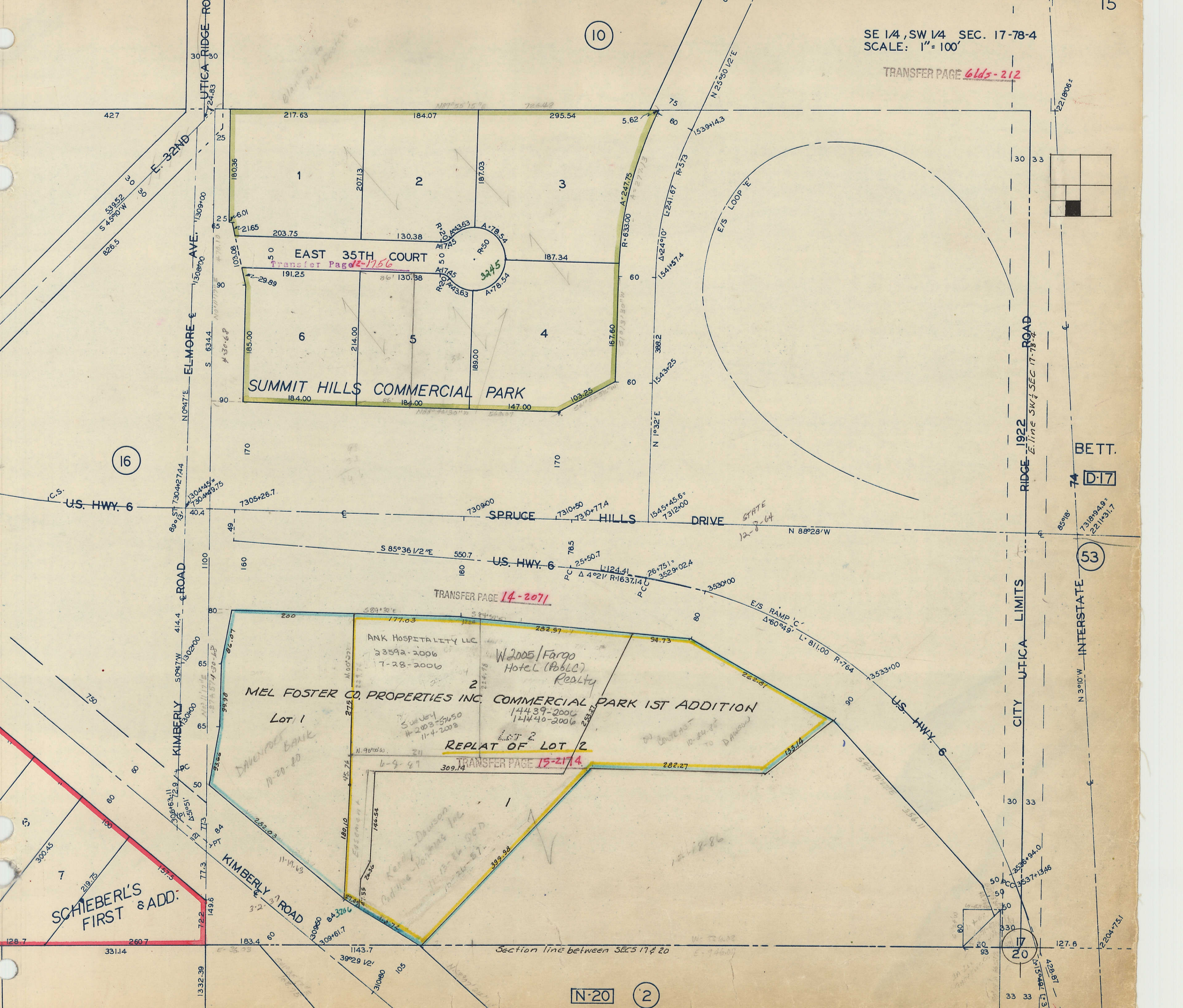
33

17

20

33

33



EAST 35TH COURT
 Transfer Page 12-1756

SUMMIT HILLS COMMERCIAL PARK

MEL FOSTER CO. PROPERTIES INC. COMMERCIAL PARK 1ST ADDITION

Lot 1
 DAVENPORT BANK
 10-20-80

Lot 2
 REPLAT OF LOT 2
 TRANSFER PAGE 15-2174

ANK HOSPITALITY LLC
 23592-2006
 7-28-2006

W2005/Fargo
 Hotel (Pob LLC)
 Realty

Survey
 #2003-51650
 11-4-2002

14439-2006
 11-4-2006

Kerry Dawson
 Ardina Partners Inc.
 11-13-84, 90D
 10-26-87

SCHIEBERL'S FIRST & ADD.

Section line between SECS 17 & 20

N-20

2

17

20

33

33