

ANDERSON & KOESTNER CONDO.

TRANSFER PAGE 15-2220

UNIT 1 RICHARD J KOESTNER
5-16-91 #09835-91

UNIT 2 STEVEN P ANDERSON
5-16-91 #09839-91

UNIT 3 _____

UNIT 4 _____

LOT 7 WINSOR CREST OFFICE CONDOS

TRANSFER PAGE 15A-2391 # 32297-94 11-9-94
14521-96 6-6-96

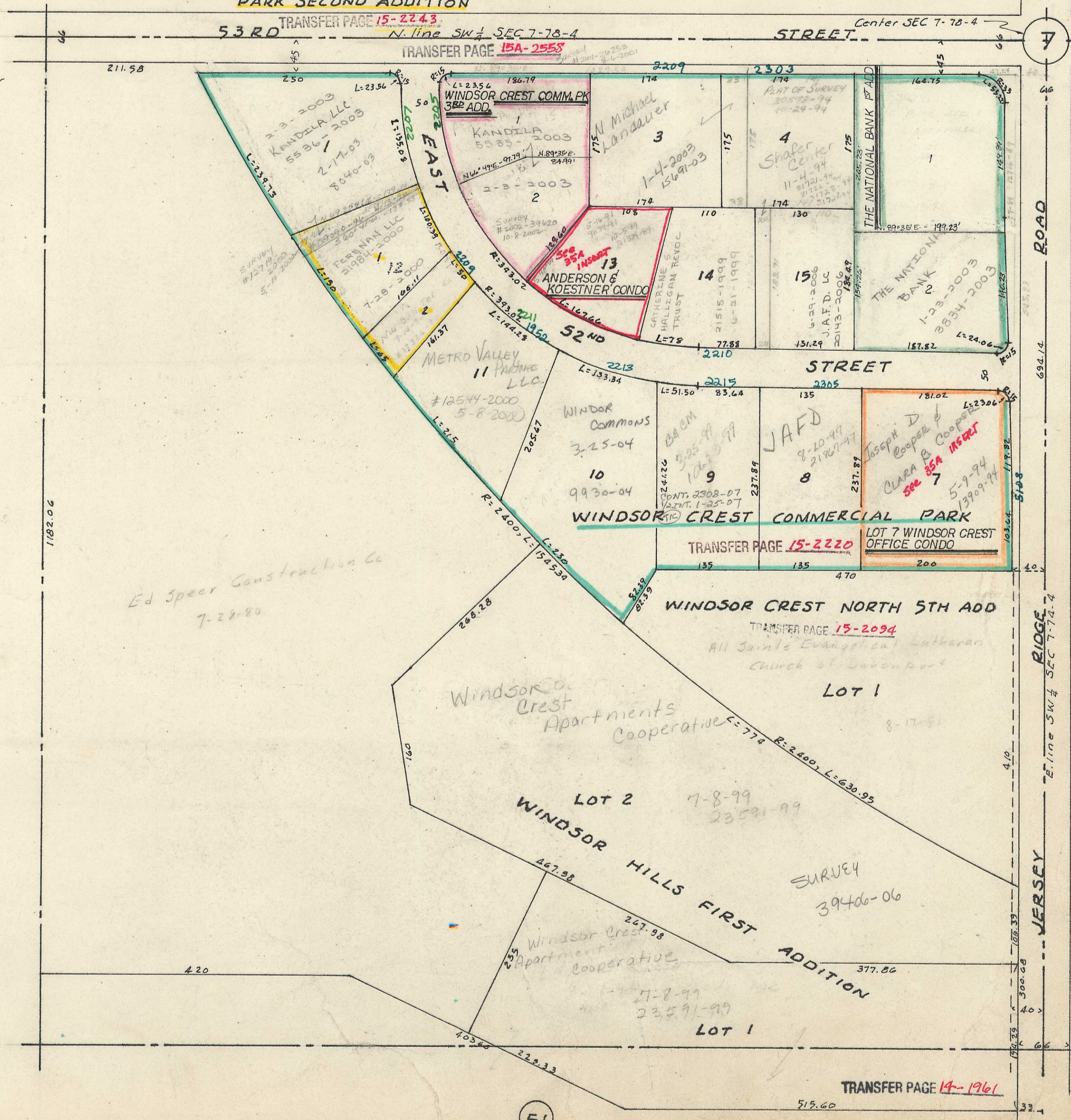
UNIT 1 Riteco, LLC 12-6-2005
40901-05

UNIT 2 KATHLEEN A BRANDTNER
17888-2005
6-7-2005

UNIT 3 JERRY A SOPER 4-29-99 7730-1999
3-3-1999

VOL Y SEC 7 PG. 19
WINDSOR CREST COMMERCIAL
PARK SECOND ADDITION

TRANSFER PAGE 62ds-208

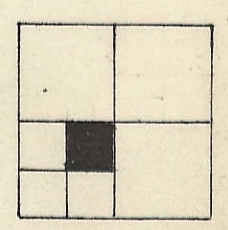


33

37

51

Ed Speer Construction Co
7-28-80



Shaper Farm
Vendure
6-21-99
10-2-00

7

40

33