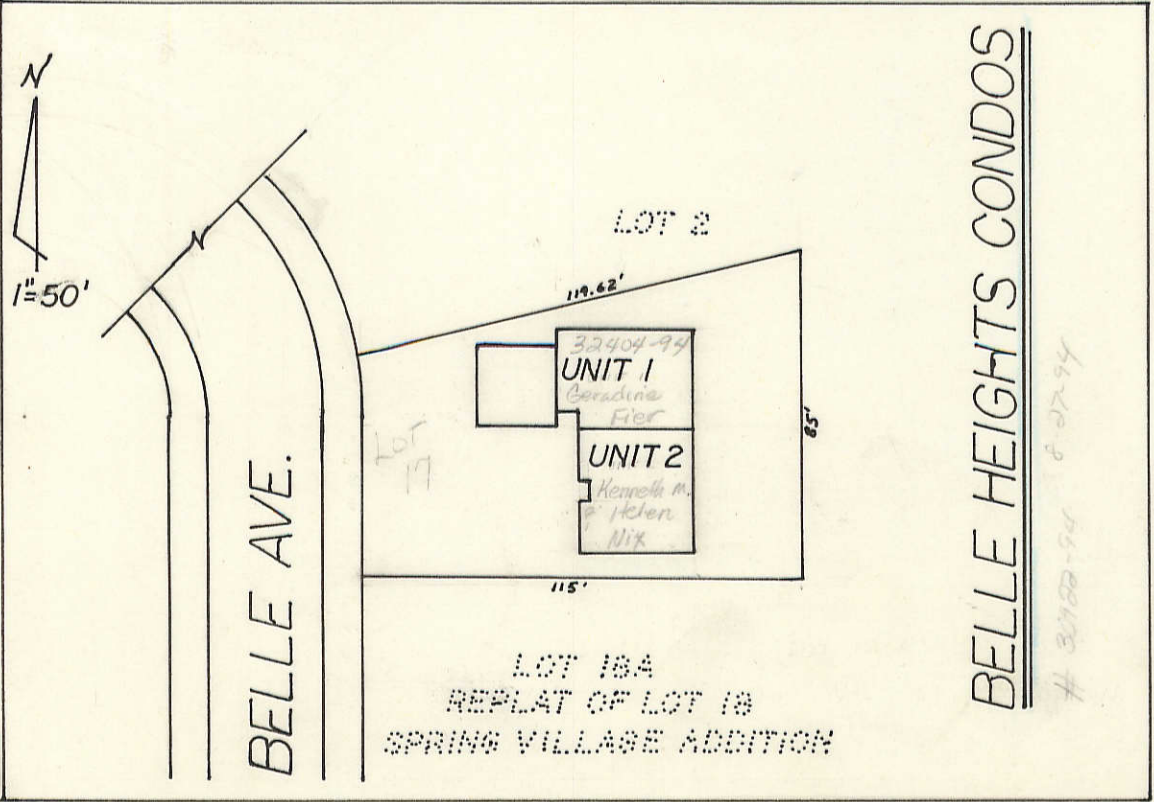
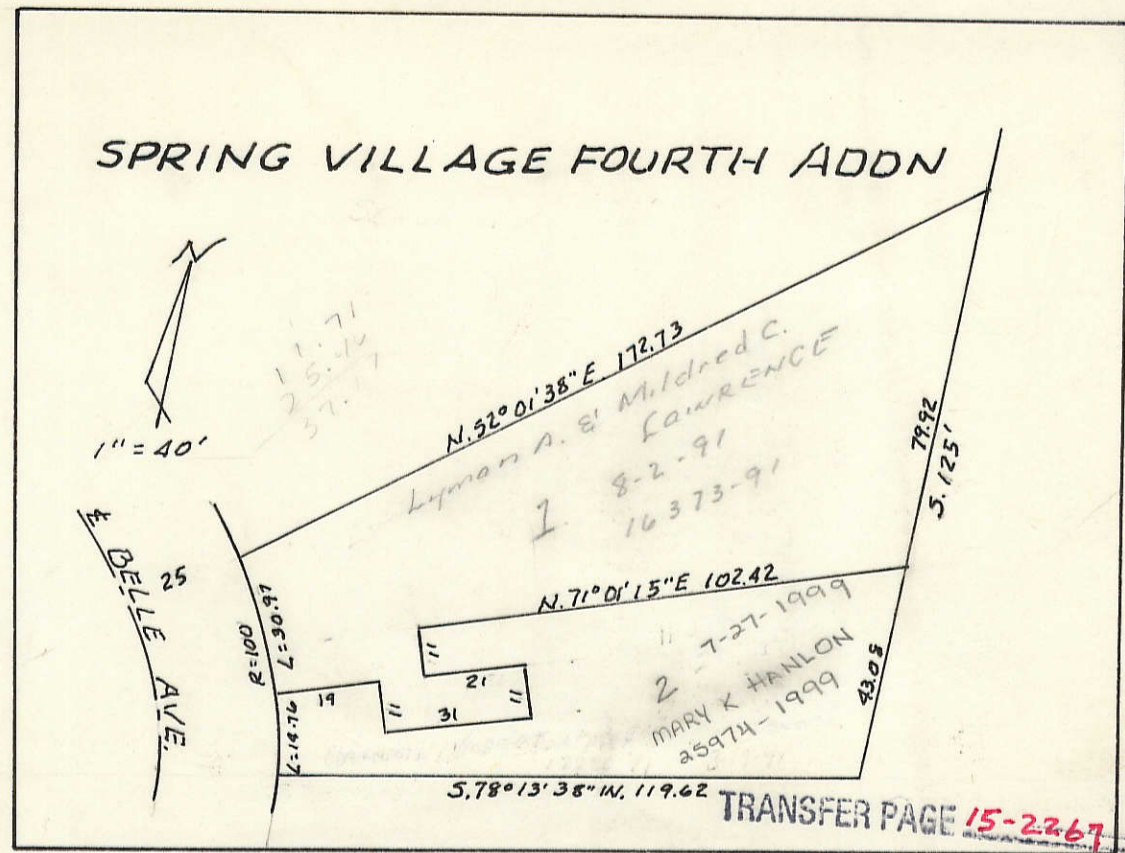
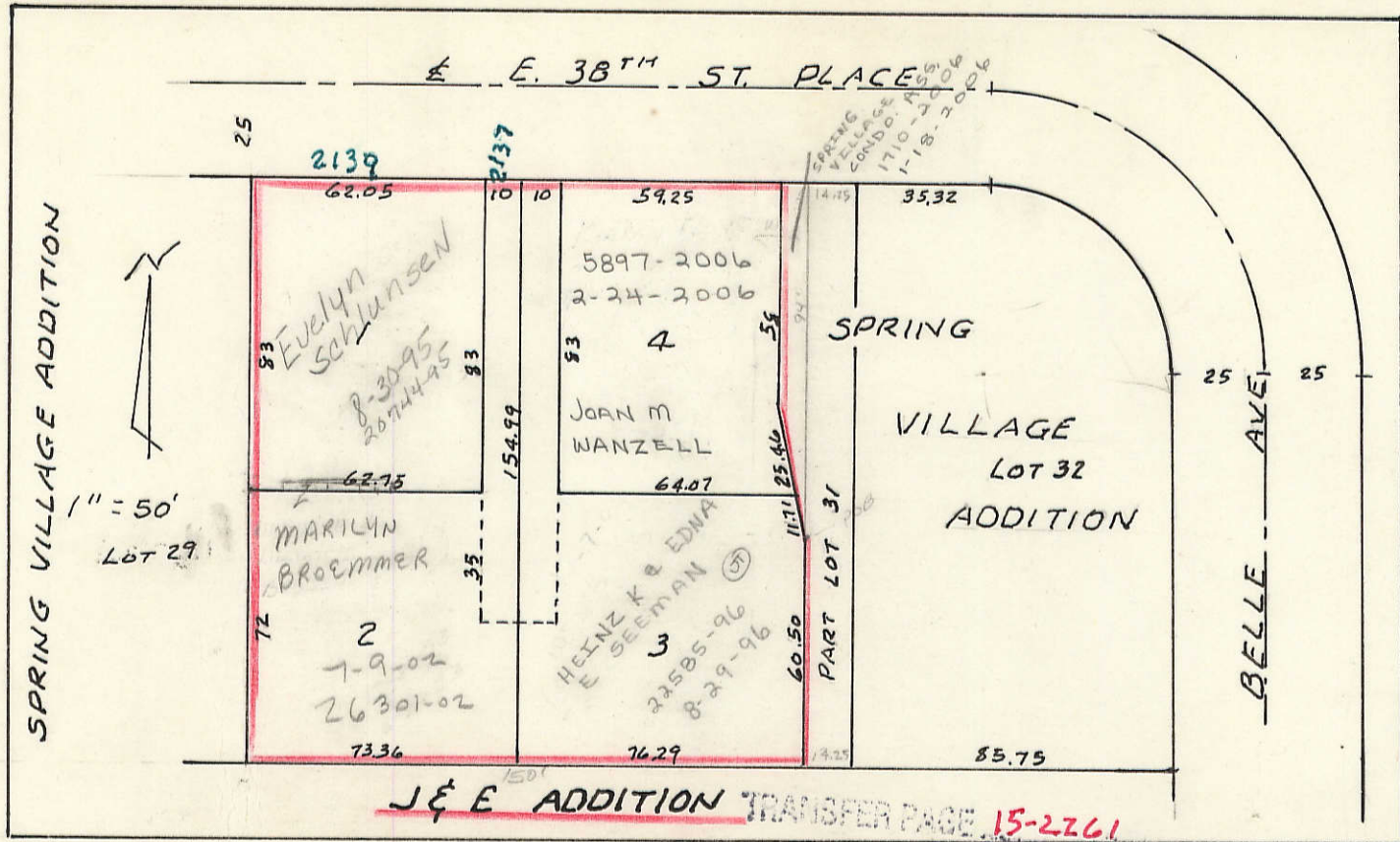


INSERT 10C

SPRING VILLAGE ADDITION LOT 17



TRANSFER PAGE 15-2341



INSERT
10B

SPRING VILLAGE ADDITION

WINDSOR PINES ADDITION

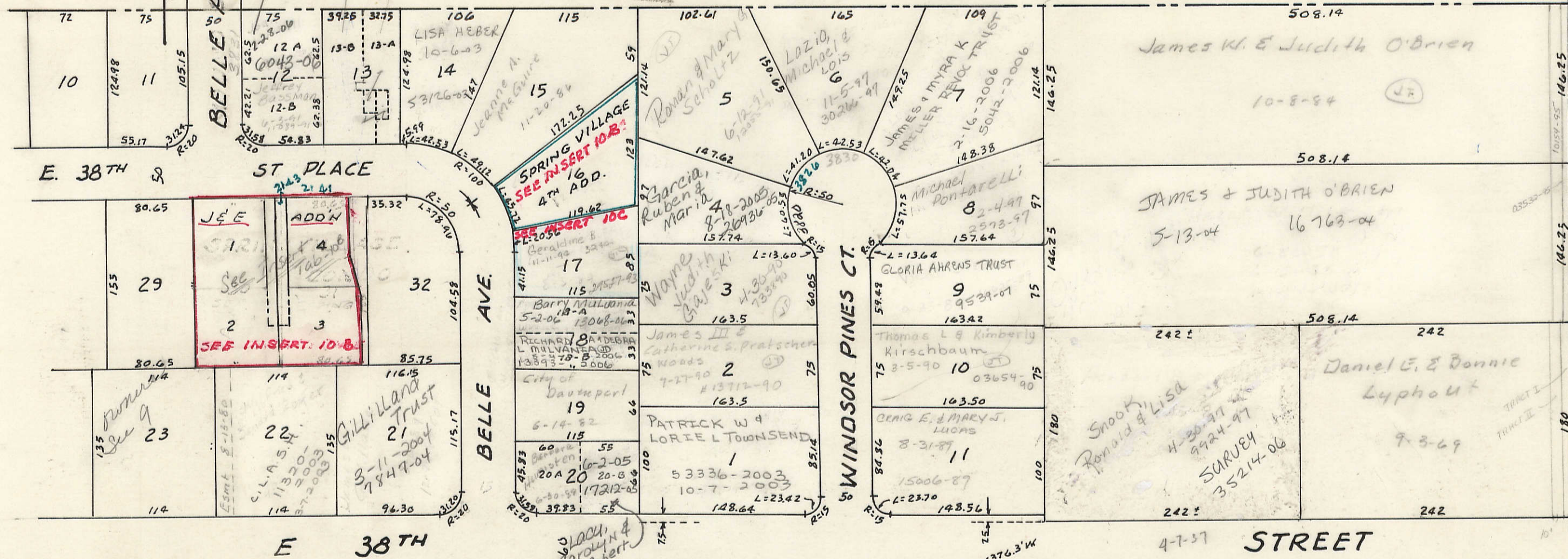
TRANSFER PAGE 14-1997

TRANSFER PAGE 15-2140

TRANSFER PAGE 15-2208

TRANSFER PAGE 61d-213

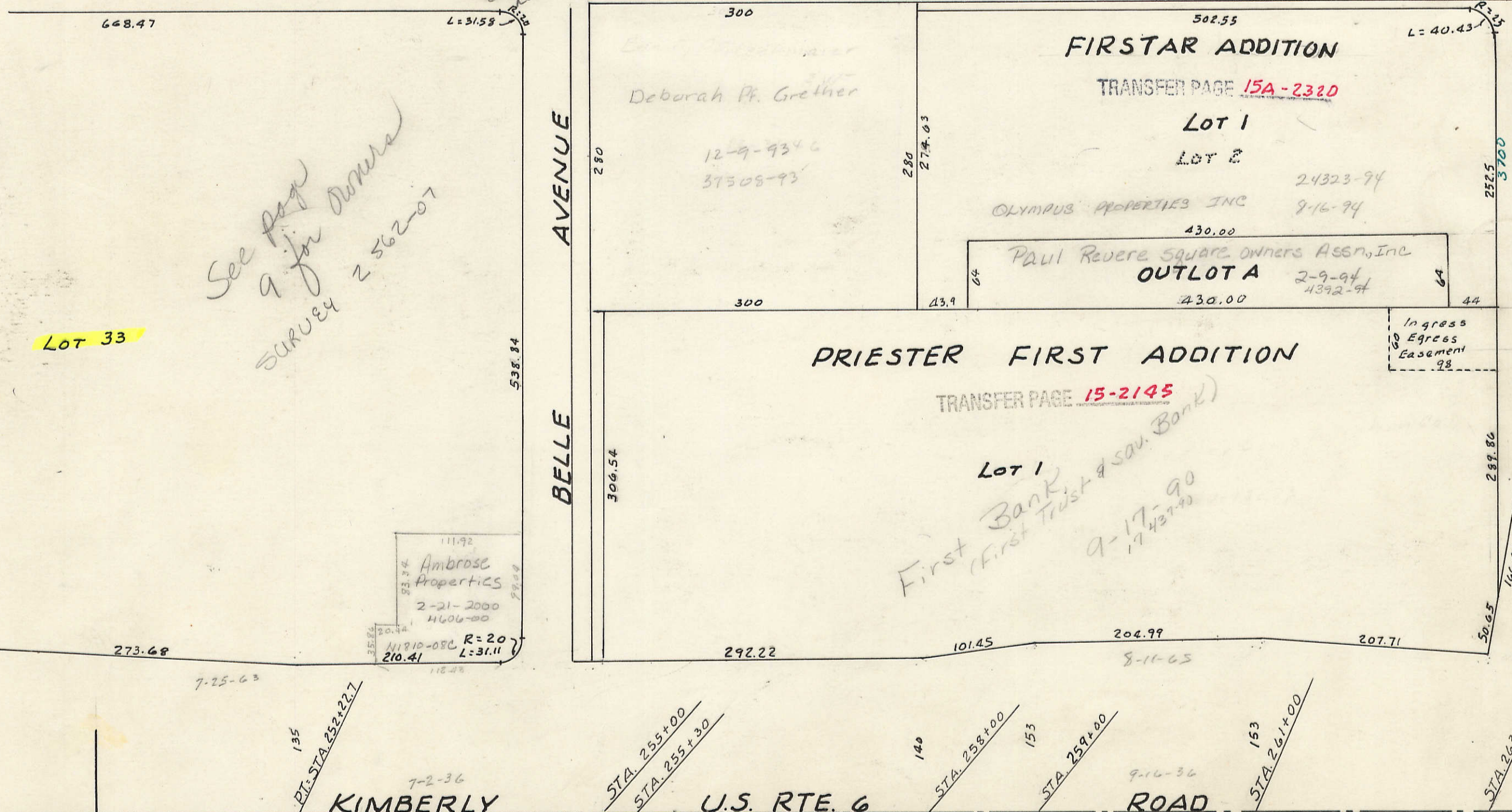
Center SEC. 18-78-4



9

See page 9 for owner survey 2562-07

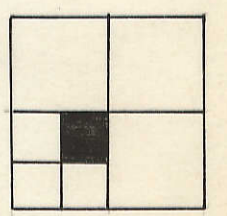
LOT 33



11

15

18



R=84.9661, L=600

Old 45' Road

70.2

60

PAUL REVERE SQUARE

TRANSFER PAGE 15-2157 (A-1-BB-6)
15-2158 (BB-7-DIB-1)

Blanks to
Paul Revere Square Professionals
6-29-93
18109-93

A-1	HKM PARTNERSHIP	9-24-98	35965-98
A-2	HKM PARTNERSHIP		5-21-86
A-3	"		"
AP-1	MAY-DUDGEON PROFESSIONALS		18097-93 6-29-93 5-12-00
AP-2	HIP PROFESSIONALS		13061-2000 5-12-00
AP-3	HIP PROFESSIONALS		13061-2000
AO-1			
AO-2			
AO-3			
AO-4			
AO-5			
AO-6			
AB-1	HKM PARTNERSHIP	9-24-98	35965-98
AB-2	HKM PARTNERSHIP		5-21-86
AB-3	A HKM PARTNERSHIP B HKM PARTNERSHIP	9-24-98 9-24-98	35965-98 5-21-86
B-1	Mary J. Goodwin Trustee	6-29-93	17882-93 11-17-04 40260-04 1-29-85
B-2	ED + JEAN JONES TRUST		1-29-85
B-3			
B-4			
B-5	PRS Partnership		4-2-93 7753-93
BO-1			
BO-2			
BO-3			
BO-4			
BB-1	Mary J. Goodwin Trustee	6-29-93	17882-93 11-17-04 40260-04 1-29-85
BB-2	ED + JEAN JONES TRUST		1-29-85
BB-3			
BB-4			
BB-5	PRS Partnership		4-2-93 7753-93
BB-6			
BB-7			
BB-8			

BB 9			
BB-10			
BB-11			
BB-12			
BB-13			
BB-14			
BB-15			
BB-16			
BB-17			
BB-18			
BB-19			
BB-20			
BB-21			
BB-22			
BB-23			
C-1	ALLEN L DIERCKS		16312-92 6-17-92
C-2			
C-3			
C-4			
C-5	A Kramer, Rodger & Sandra REV. TRUST B Livermore, Jimmie & Carol (JD)	3-30-99	11065-99 1-2-86
CP-1			
CP-2			
CP-3			
CP-4			
CP-5	RONALD A MAY		28755-2001 8-22-2001
D2-1	METROBANK, NATIONAL ASSOCIATION		01487-97 1-22-1997
DIP-1	O'BRIEN + GREVE PROPERTIES		11-6-02 44949-02
D2P-1			11-6-02 44949-02
DIO-1	O'BRIEN + GREVE PROPERTIES		11-6-02 44949-02
D2O-1			11-6-02 44949-02
DIB-1	O'BRIEN + GREVE PROPERTIES		11-6-02 44949-02

