

UTICA RIDGE OFFICE PARK CONDOS
(LOT 1 OF UTICA CORNERS ADD)

UTICA RIDGE RETAIL PARK CONDOS
(LOT 2 OF UTICA CORNERS ADD)

PARCEL # N0839-01

BLANKS TO
UTICA CORNERS
RETAIL VILLAGE
#6-98
41459-98

BLDG. 1

BLDG. 5

(AREA 4.5) # 23720-97
4-6-97

Utica Corner Office Venture

BLDG. 1

TRANSFER PAGE 15A-2499

BLDG. 2

Ruhl Comm PARTNERS 3713-07
2-8-07

BLDG. 2

THREE N CORPORATION

3-22-2006

8680-2006

BLDG. 3

IBSN INC. 22933-06

BLDG. 3

Coventry RESTAURANT HOLDING Co. LLC.

2000-19092 6-30-2000

06947 -
2000
3-16-2000

BLDG. 4

Utica Corner Office Venture 1-17-2002
2-18-02

BLDG. 4

DENOVO LLC 9-27-2006

30580-2006

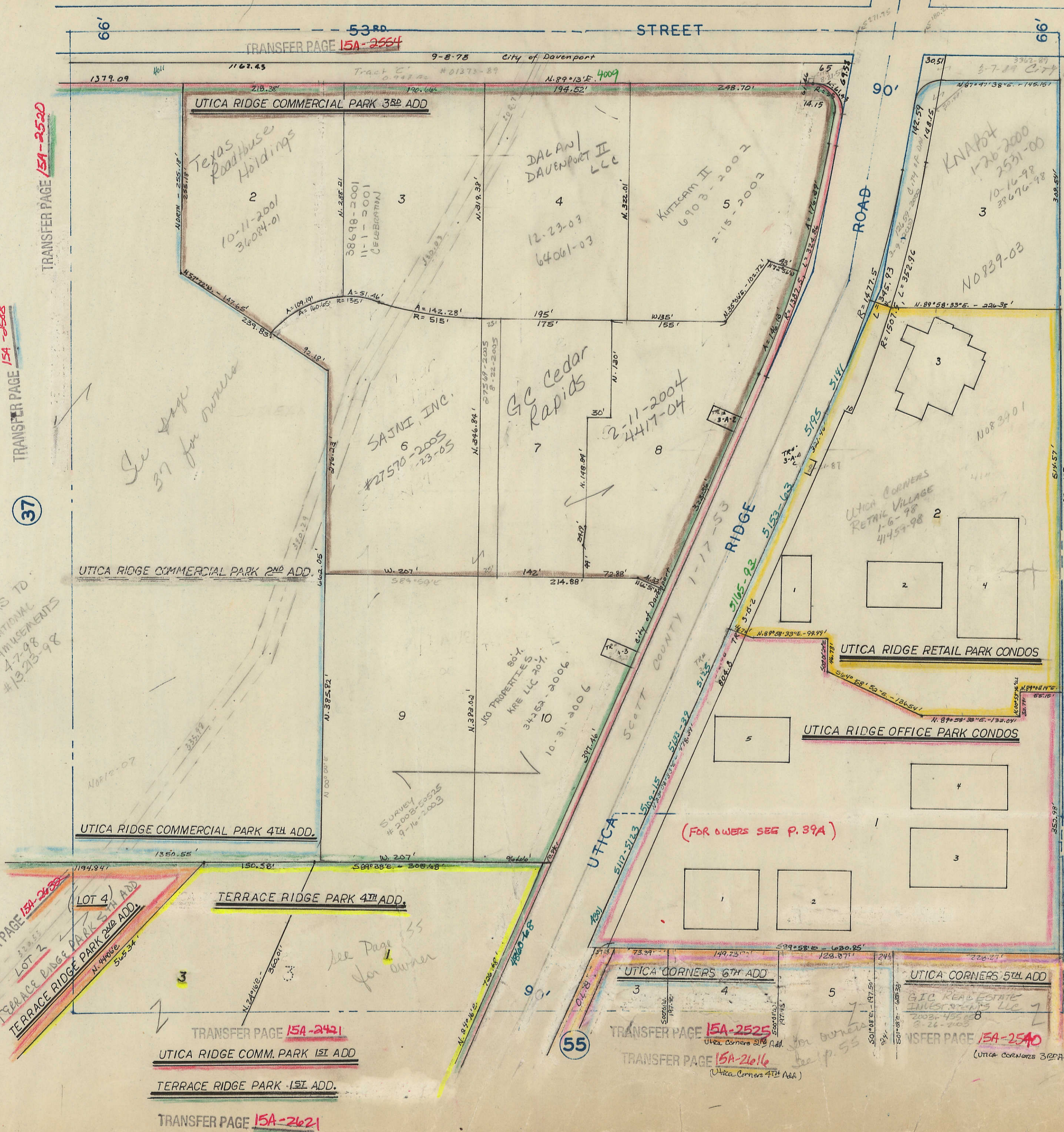
8000 -
26074
4-7-2000

BLANKS TO
UTICA CORNERS
OFFICE
VENTURES, L.C.
9406-97
4-23-97

TRANSFER PAGE 15A-2397

Transfer Page 6lds-209

SCALE: 1 in. = 100 ft



TRANSFER PAGE 154-2520

TRANSFER PAGE 154-2588

37

BLANKS TO NATIONAL AMUSEMENTS #13213-98

TRANSFER PAGE 154-2620
LOT 2
TERRACE RIDGE PARK 2ND ADD.
TERRACE RIDGE PARK 3RD ADD.

TRANSFER PAGE 154-2421

UTICA RIDGE COMM. PARK 1ST ADD.

TERRACE RIDGE PARK 1ST ADD.

TRANSFER PAGE 154-2621

55

TRANSFER PAGE 154-2525

UTICA CORNERS 2ND ADD.

TRANSFER PAGE 154-2616

UTICA CORNERS 4TH ADD.

TRANSFER PAGE 154-2520

UTICA CORNERS 3RD ADD.

TRANSFER PAGE 154-2499

33 SEC. 9

UTICA CORNERS ADD.

TRANSFER PAGE 154-2394

TRANSFER PAGE 154-2397

BLANKS TO: UTICA CORNERS HOLDING CO., LLC