

N 1/4 Corner SEC 35-78-3

Section line between SECS 35 & 26

26  
35

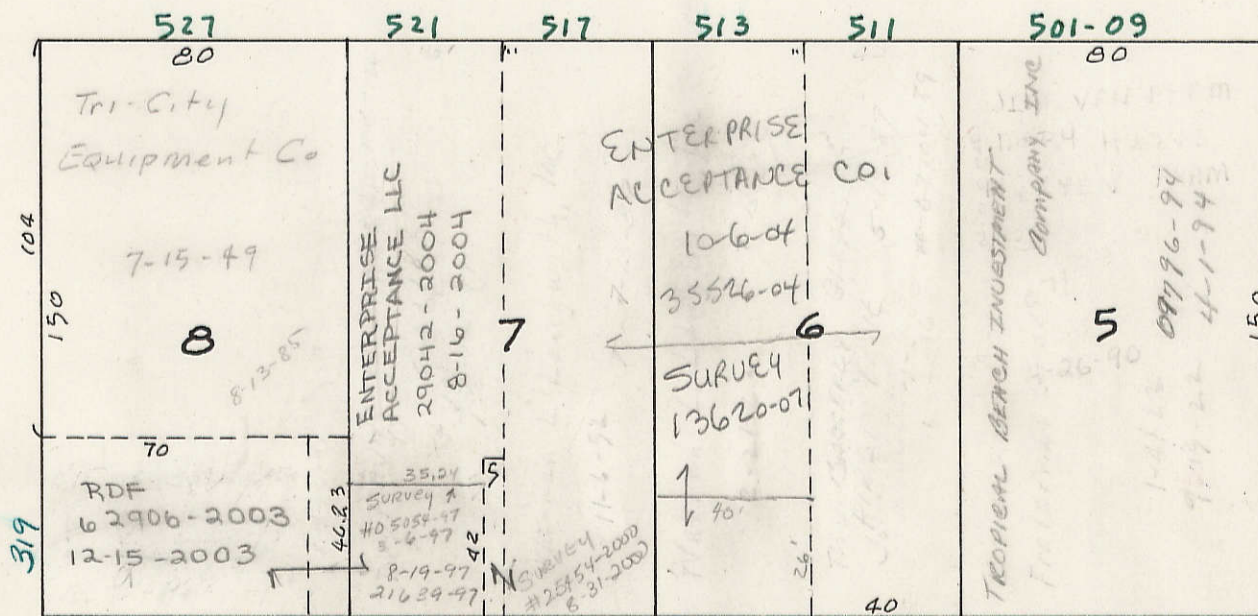
FOURTH

ONE-WAY

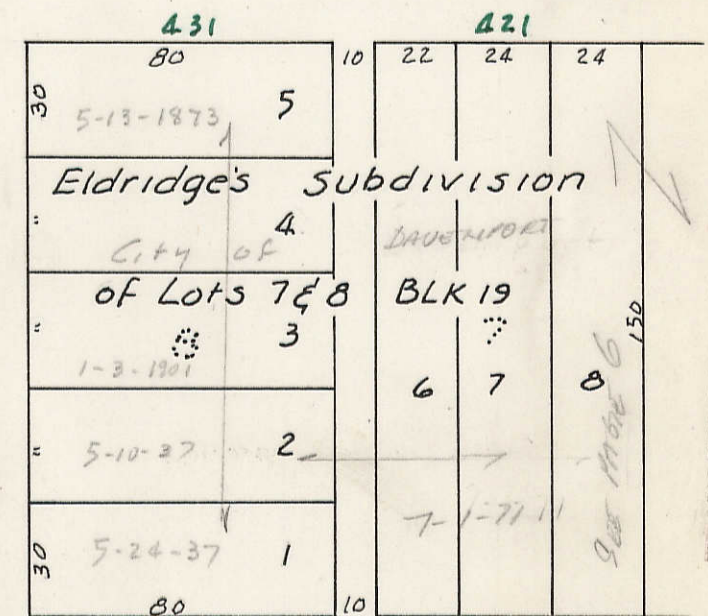
STREET

AVENUE 100

STREET 80



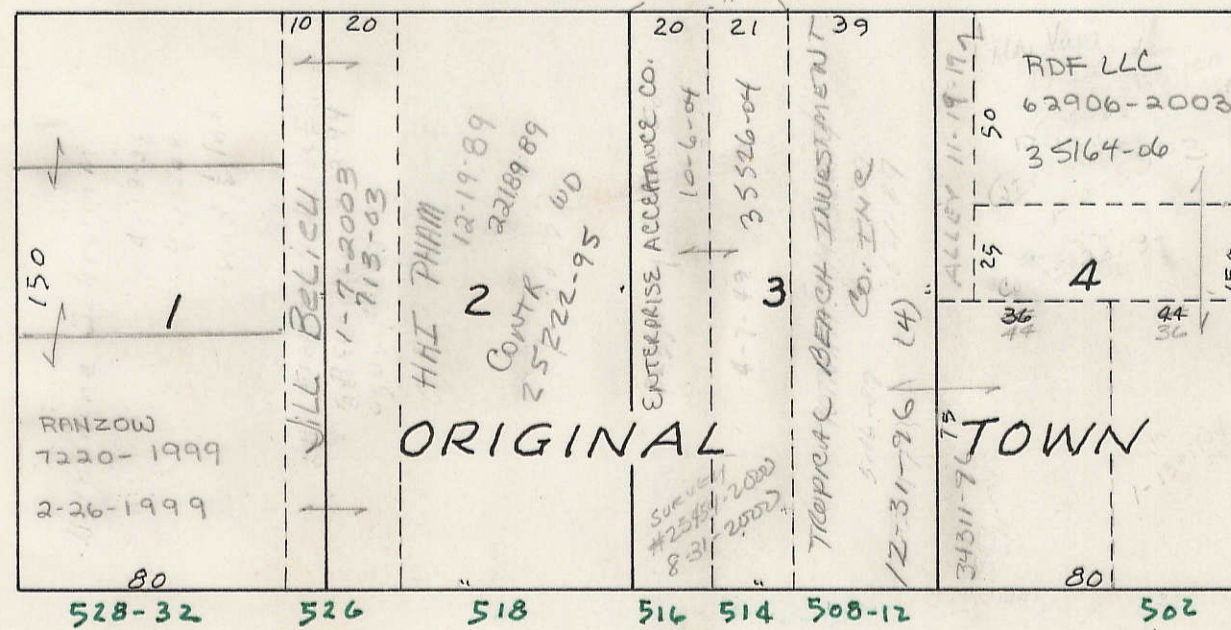
TRANSFER PAGE 2-134 BLK 18



TRANSFER PAGE 2-135 BLK 19

4

6



THIRD

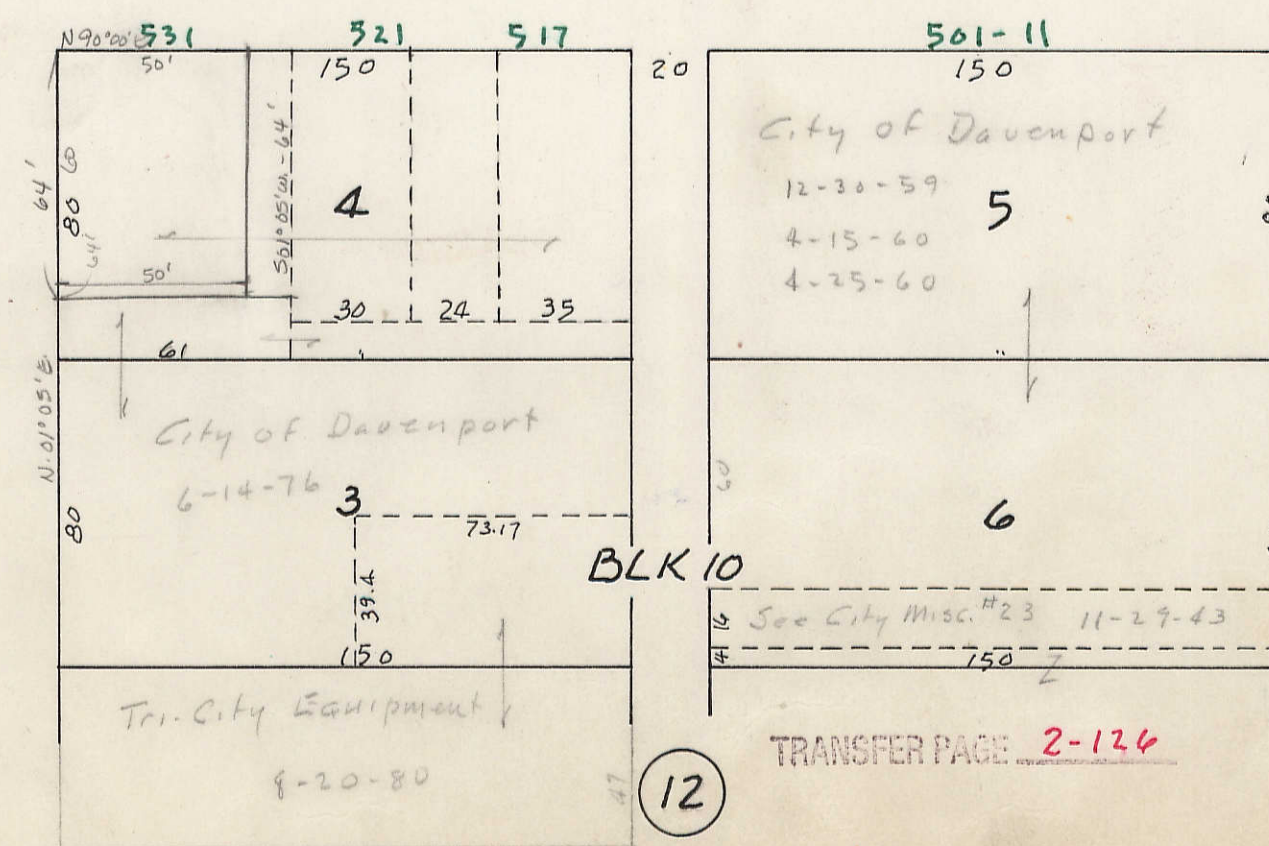
ONE-WAY

STREET

WESTERN

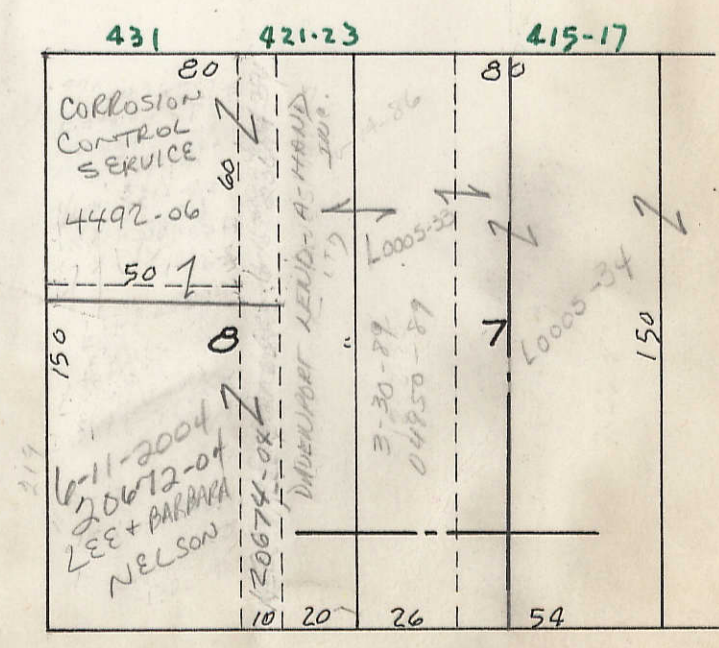
SCOTT

W. line NE 1/4 SEC 35-78-3



BLK 10

TRANSFER PAGE 2-124



BLK 9

TRANSFER PAGE 1-125