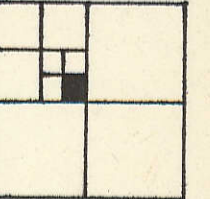


(20)

Transfer Page 203 Lds



For ownership of  
Lot 1, Block 6 See  
Page 29A

Transfer Page 8-957

See Pg. 30

C.R.T. & P. R.R. SW LINE  
7-9-1902 add

Van Tuxl & Cook's

QUANEX CORPORATION  
7-28-60  
5-9-64  
8-11-92  
21830-92

ADD

21830-92  
8-11-92

to Original River Bank

QUANEX CORPORATION  
8-11-92  
21830-92

Tract 2

MURRAY ENTERPRISES  
8-20-99  
29729-99

Tract 3

HOWELL

ST.

(30)

(28)

(36)

60

60

209

100

211.5

N 27 1/2 W

S 21 1/2 E

119.9

138.80

215.50

025.81

110.20

318.60

9-9-1982 add

C.M. & P. R.R. Co

City of Davenport

6-7-58

K0029-d

Nichols  
K0029-a2

12-24-58  
4-9-64

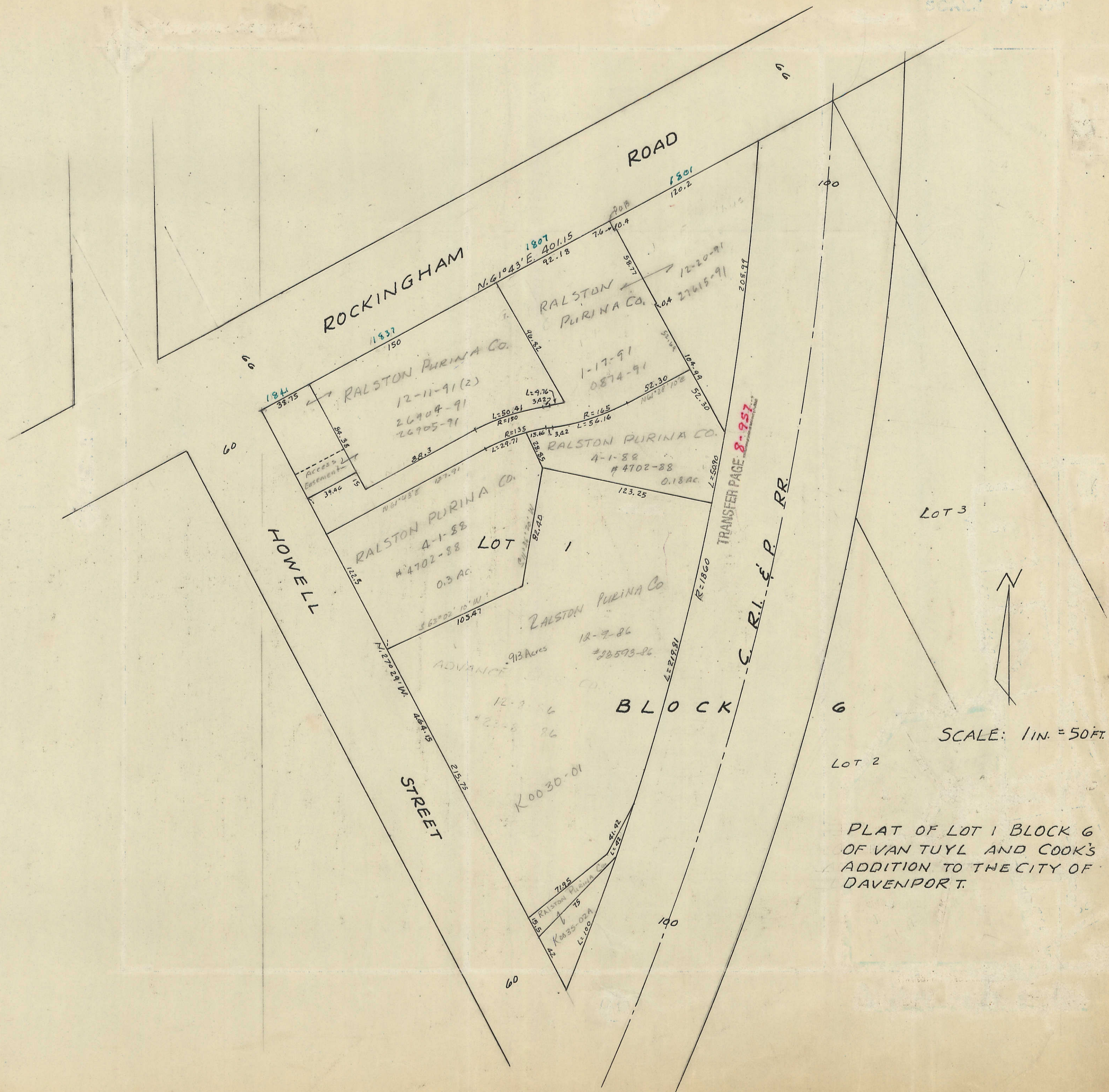
1-18-23  
5-9-64  
8-2-92  
3-17-94

Tract 1  
769.80  
075  
75

1818.93

208.20





SCALE: 1 IN. = 50 FT.

PLAT OF LOT 1 BLOCK 6 OF VAN TUYL AND COOK'S ADDITION TO THE CITY OF DAVENPORT.

ROCKINGHAM ROAD

HOWELL STREET

C. R. I. & P. RR.

RALSTON PURINA CO.  
12-11-91 (2)  
26904-91  
26905-91

RALSTON PURINA CO.  
4-1-88  
#4702-88  
0.18 AC

RALSTON PURINA CO.  
12-9-86  
#28593-86

K0030-01

LOT 3

LOT 2

BLOCK 6

TRANSFER PAGE 8-957

60

100

100

60

60

60

Access Easement  
39.06

ADVANCE CO.  
913 Acres

RALSTON PURINA CO.  
1-17-91  
0874-91

RALSTON PURINA CO.  
4-1-88  
#4702-88  
0.18 AC

RALSTON PURINA CO.  
12-9-86  
#28593-86

RALSTON PURINA CO.  
7195  
K0035-02A  
L-100

N. 61° 43' E  
401.15  
92.13

1837  
150

1841  
38.75

1807  
401.15  
92.13

1801  
120.2

70.4

70.4

58.77

58.77

52.30

52.30

52.30

52.30

52.30

52.30

52.30

52.30

52.30

52.30

52.30

52.30

52.30

52.30

52.30

52.30