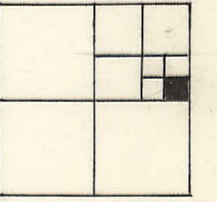


6103-197

See pg 24



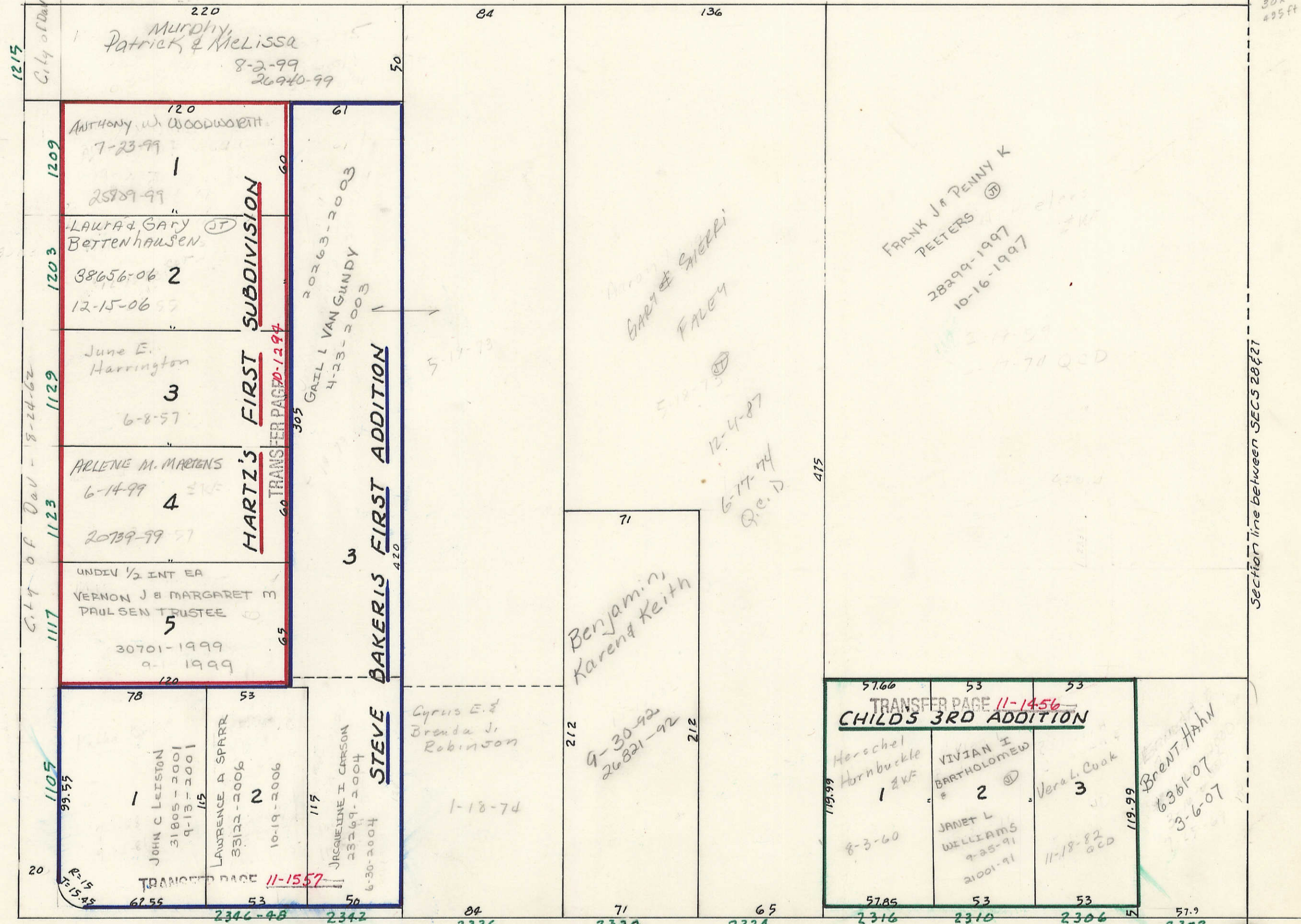
AVENUE

LINCOLN

26

VOL H

32



SE Cor 04.7  
SW Cor 04.8

SE Cor 2102'S  
04.8

302 N  
495 ft

Section line between SECS 28 & 27

11TH STREET  
S. line NE 1/4 SEC 28-78-3

E. 1/4 Corner SEC 28-78-3