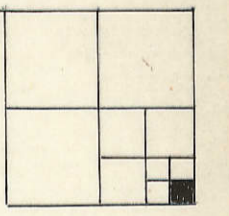
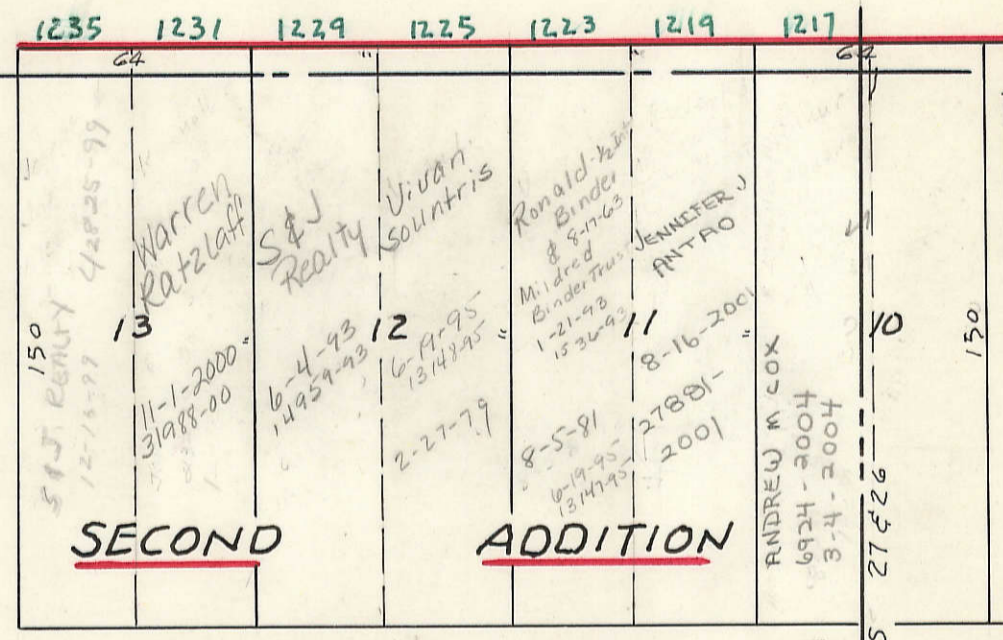
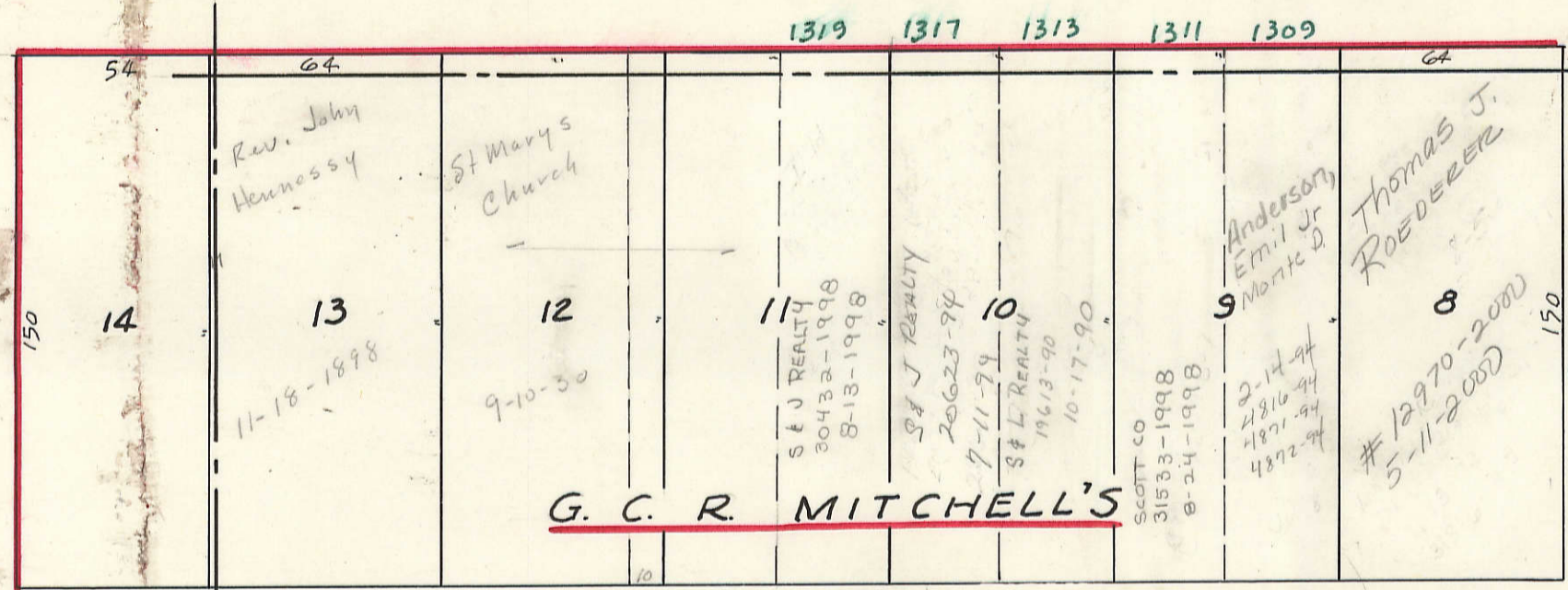


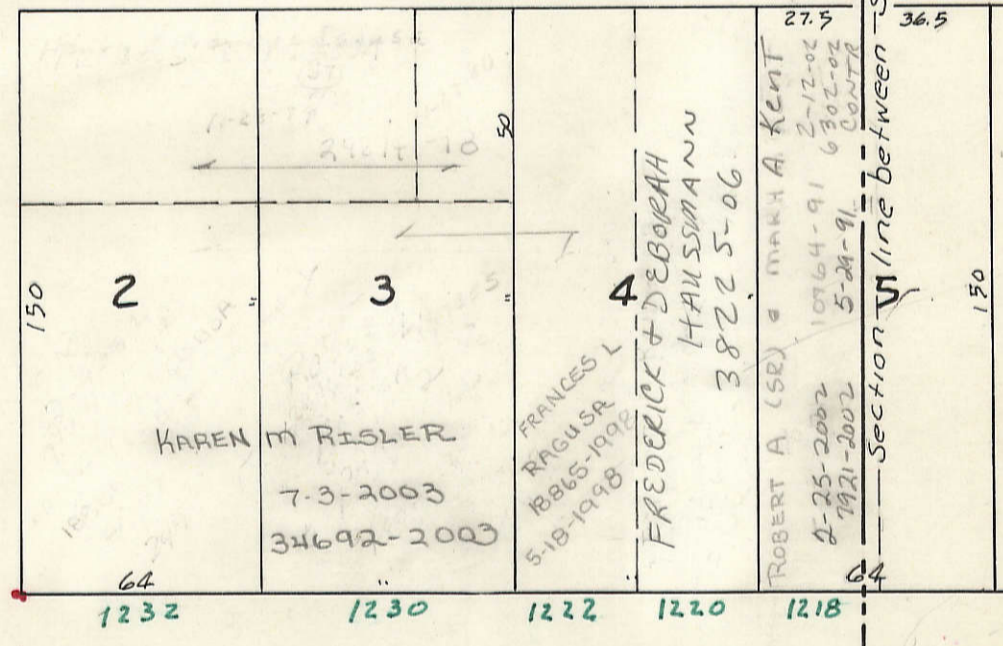
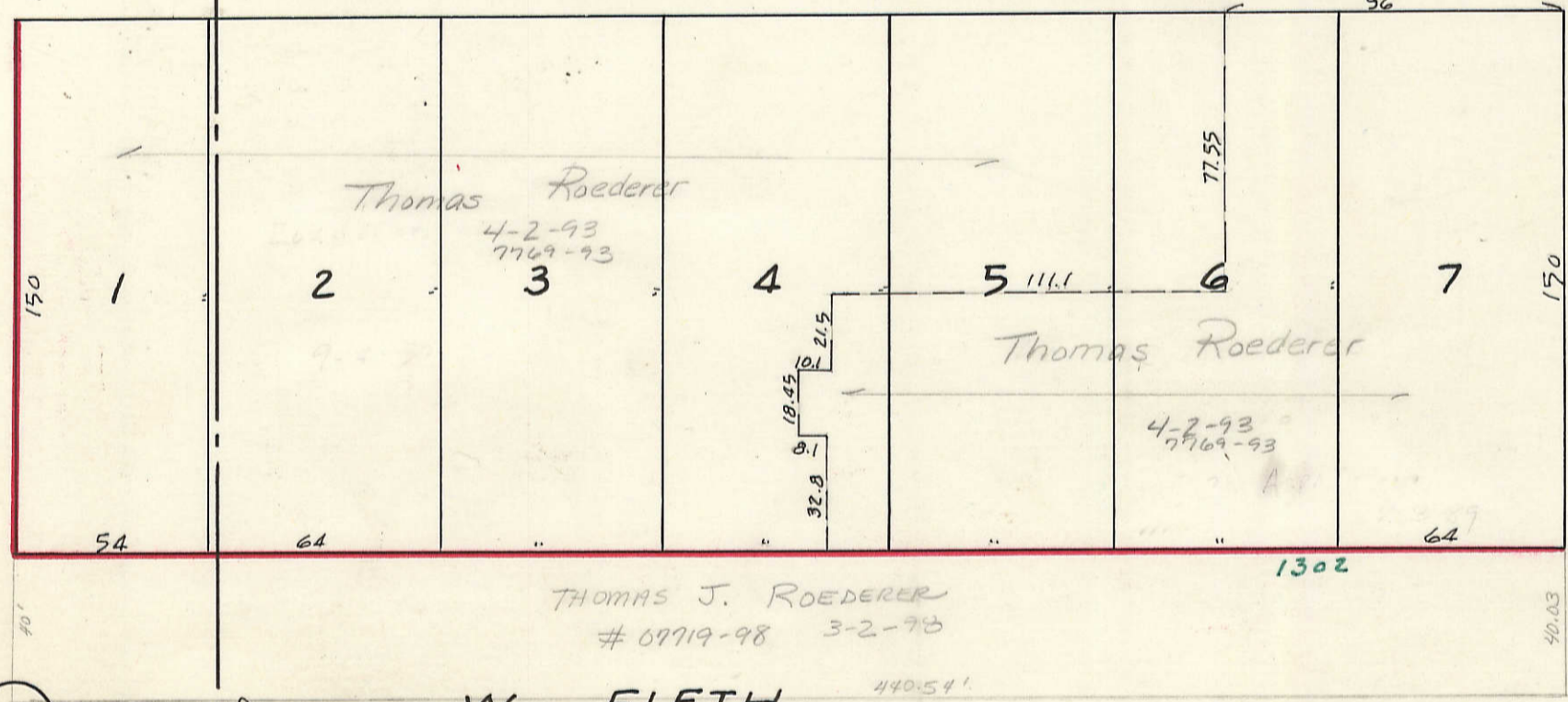
56

W. SIXTH STREET



TRANSFER PAGE 5-591

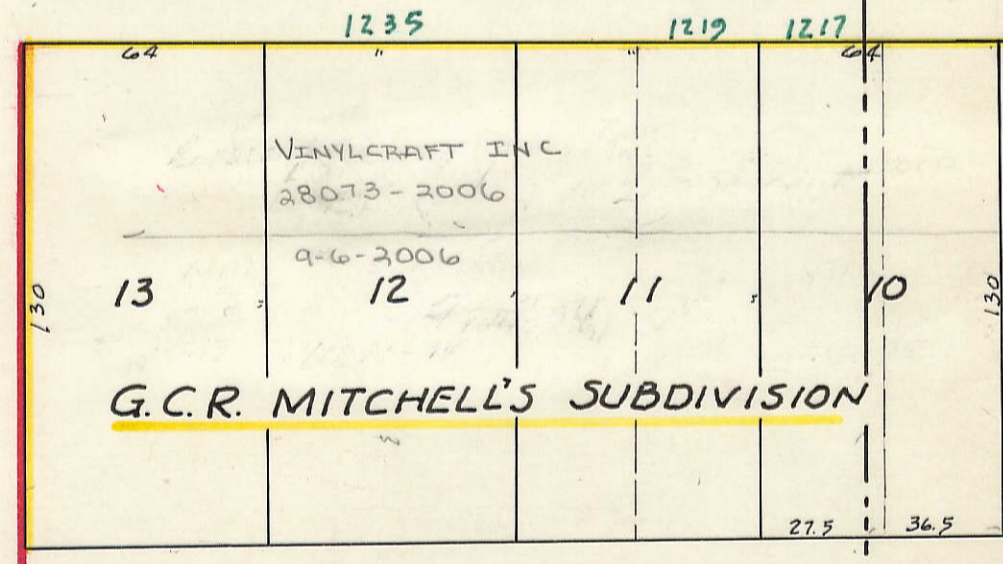
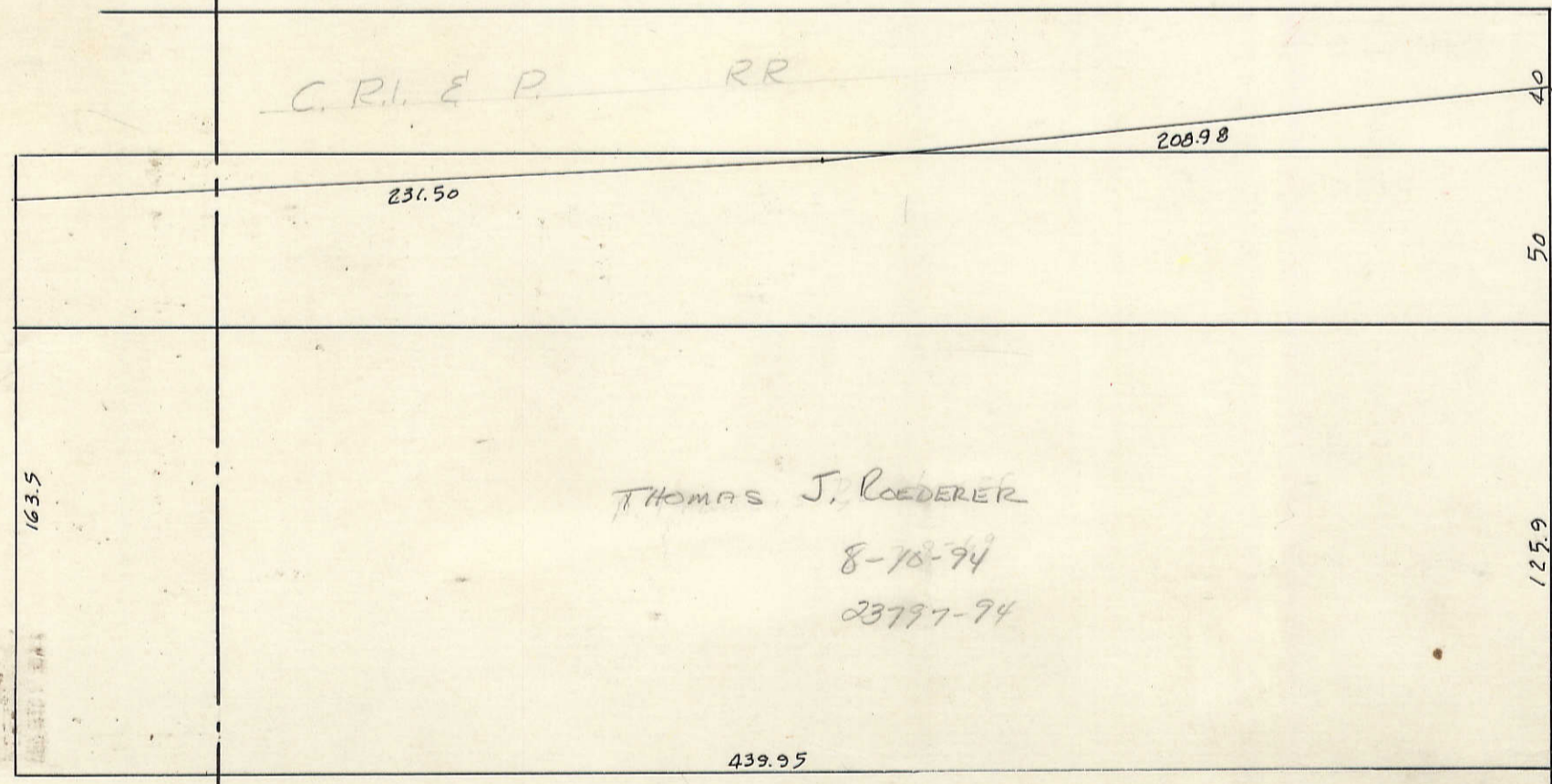
TRANSFER PAGE 5-590



W. FIFTH STREET

STREET

58



SEE INSET

THOMAS J. ROEDERER, 8-78-94, 23777-94

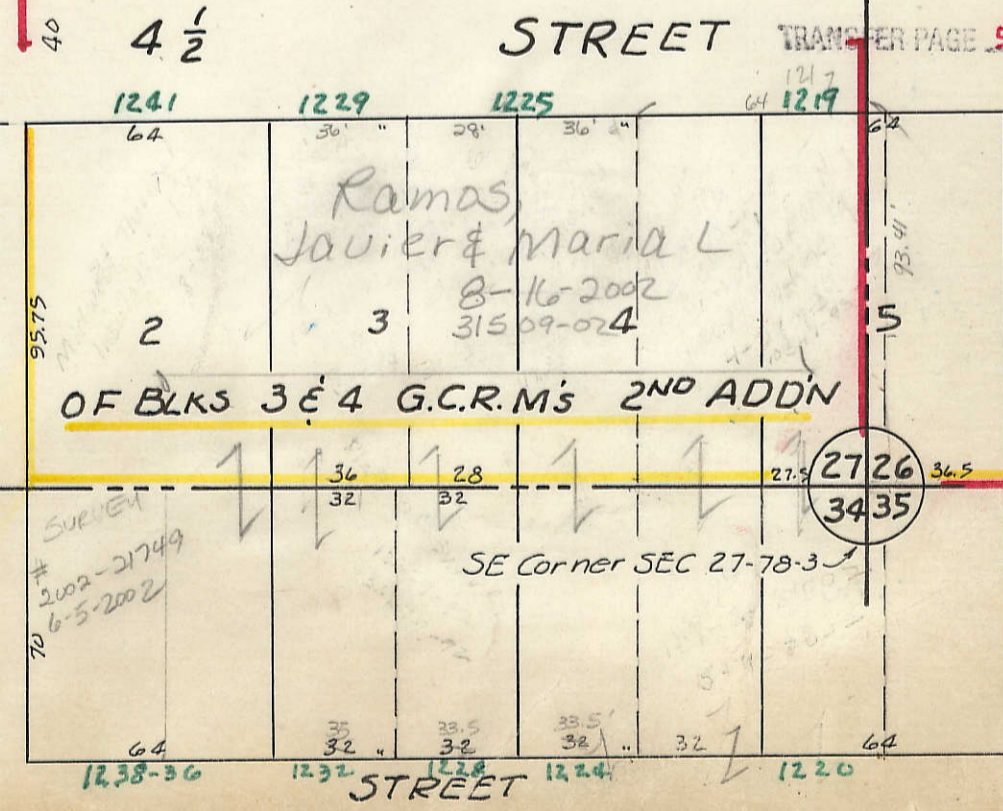
G.C.R. MITCHELL'S SUBDIVISION, RAMAS JAVIER & MARIA L, 8-16-2002, 31509-024

Section line between SECS 27 & 34

VOL. K

8

W. FOURTH STREET



TRANSFER PAGE 5-587

OF BLS 3 & 4 G.C.R.'s 2ND ADDN

2726, 3435

SE Corner SEC 27-78-3