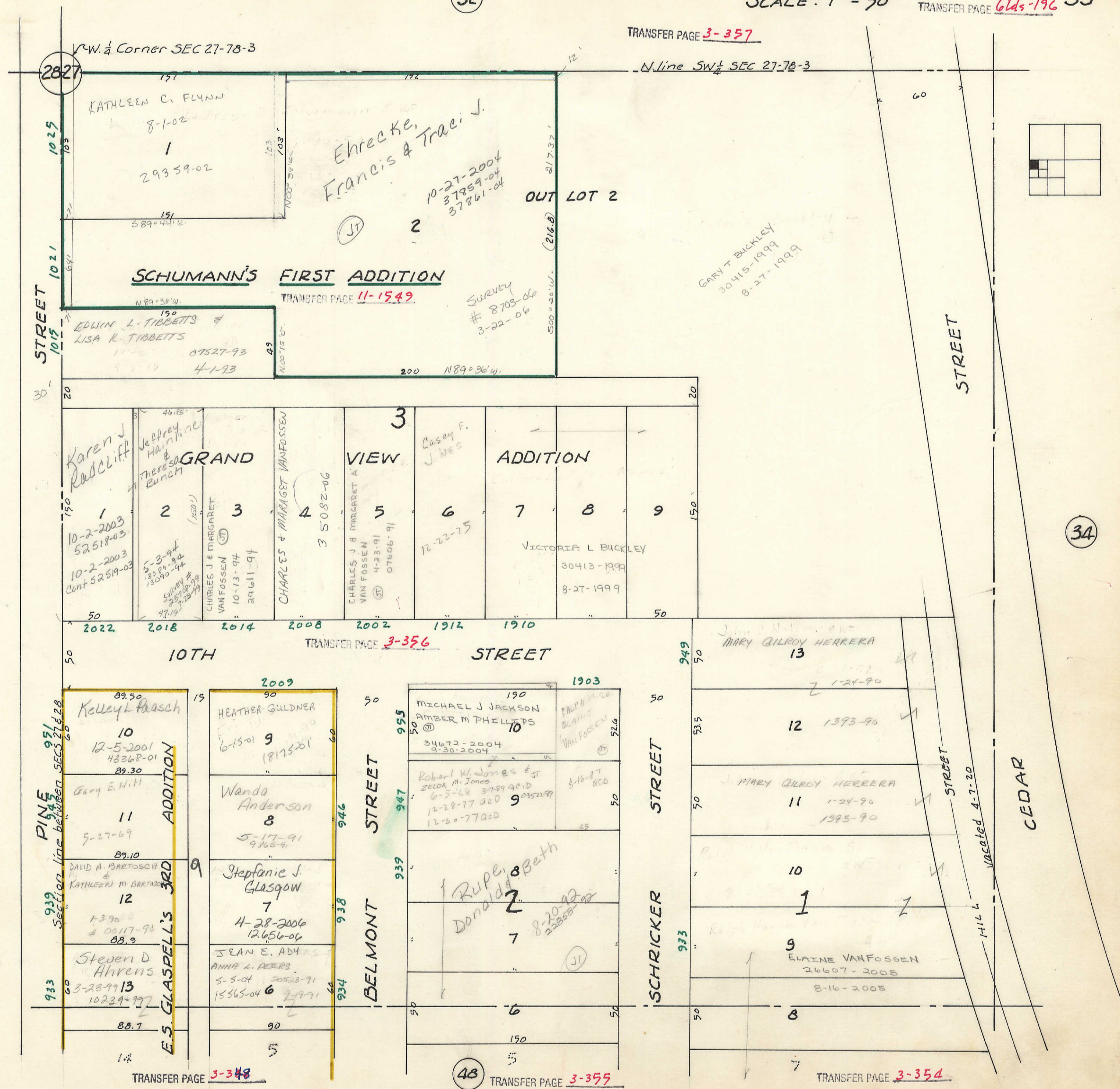


32

TRANSFER PAGE 3-357



N.W. 1/4 Corner SEC 27-78-3

N. line SW 1/4 SEC 27-78-3

2827

STREET
1025
1021
1015

STREET

VOL I
40

34

SCHUMANN'S FIRST ADDITION

TRANSFER PAGE 11-1549

GRAND VIEW ADDITION

TRANSFER PAGE 3-356

10TH STREET

STREET

PINE STREET
951
945
939
933

E.S. GLASPELL'S 3RD ADDITION

BELMONT STREET

SCHRICKER STREET

STREET
MILK
vacated 4-7-20

CEDAR

TRANSFER PAGE 3-348

48

TRANSFER PAGE 3-355

TRANSFER PAGE 3-354