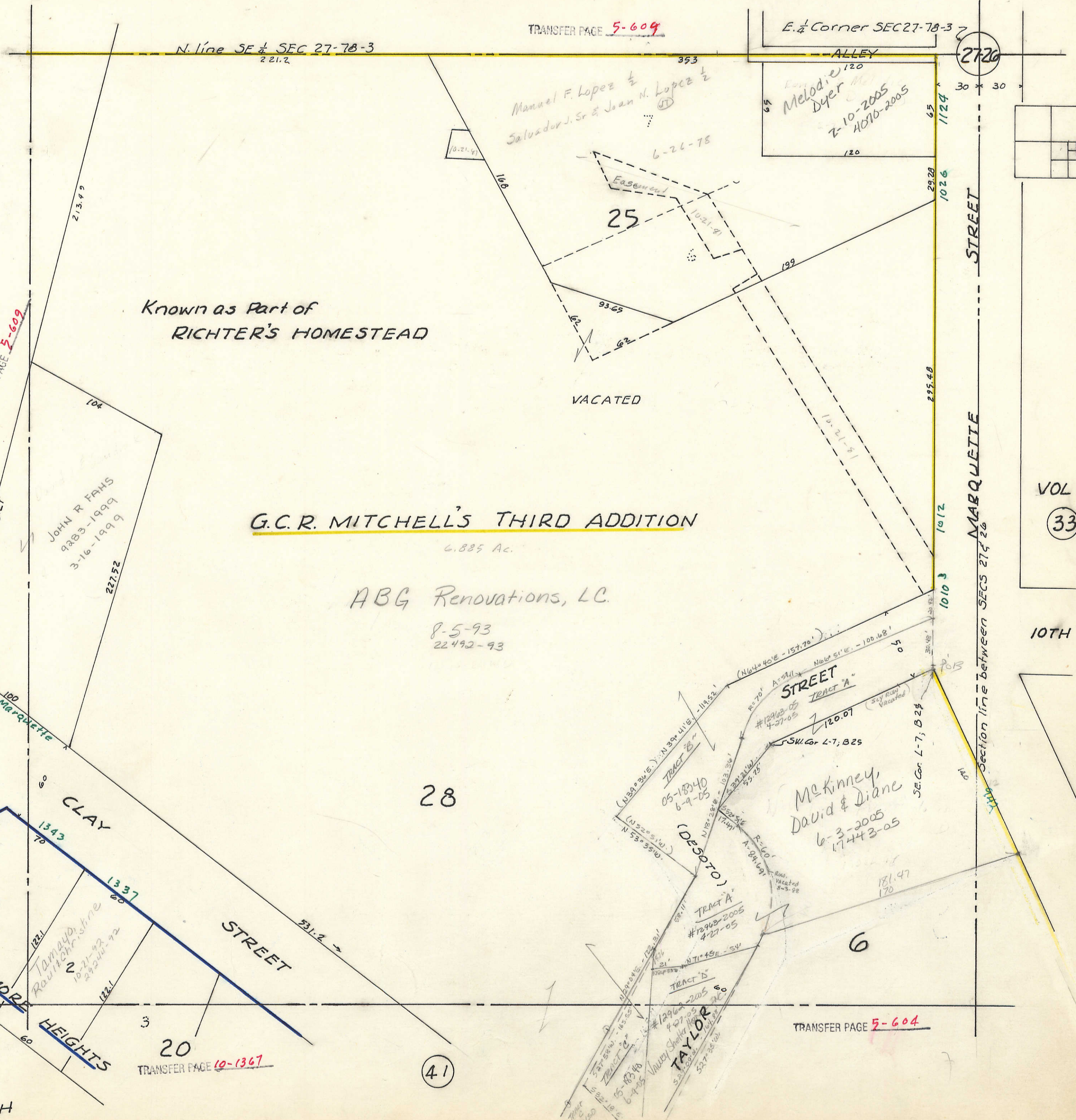


(25)

TRANSFER PAGE 5-609

E. 1/4 Corner SEC 27-78-3

2720



TRANSFER PAGE 5-609

(39)

Known as Part of  
RICHTER'S HOMESTEAD

G.C.R. MITCHELL'S THIRD ADDITION

6.885 Ac.

ABG Renovations, LC.

8-5-93  
22492-93

28

VOL G

(33)

10TH ST

MARQUETTE STREET  
Section line between SECS 27 & 28

CLAY STREET  
EILMORE HEIGHTS  
TAMAYO, RAUL & CHRISTINE  
10-21-92  
24200-92

20  
TRANSFER PAGE 10-1367

(41)

TRANSFER PAGE 5-604