

Locust Street

Ave

Tremont Ave

E. 18th

(Kent)

St

Arlington

Court

Arlington

of PARK PLACE

SUBDIVISION
(of PART of A.C.F.'S PLAT OF N. DAVENPORT)

(PART) A.F. CUTTER'S

(PART) LECLAIRE'S

13th ADD.

of LOTS 6-7-8

KIRKWOOD BOUL. ADD.

TRANSFER PAGE 15A-2508

TRANSFER PAGE 422

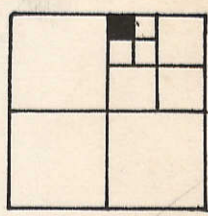
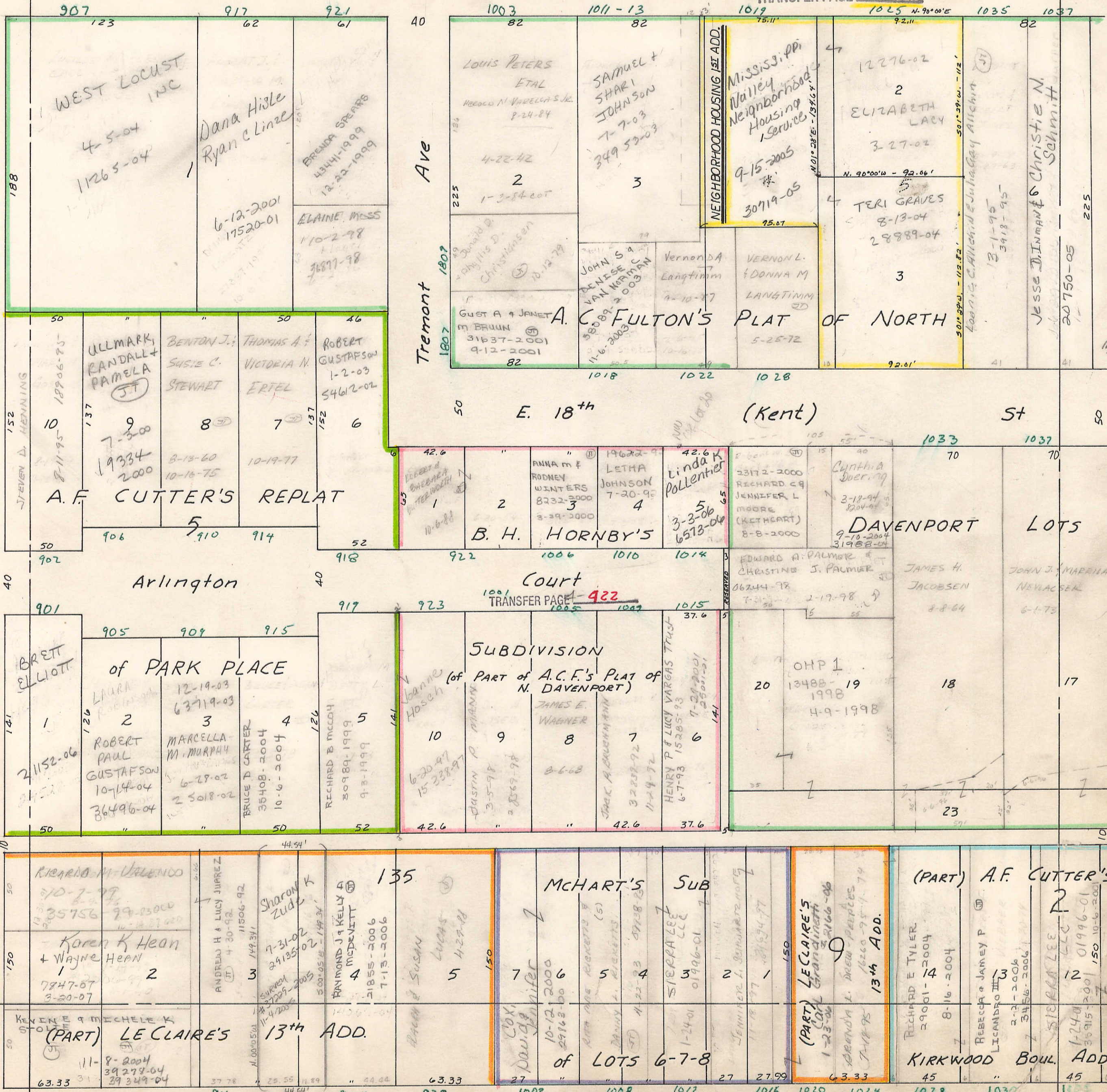
TRANSFER PAGE 546

TRANSFER PAGE 325

4

6

12



11-8-2004
39278-04
39349-04

KIRKWOOD BD