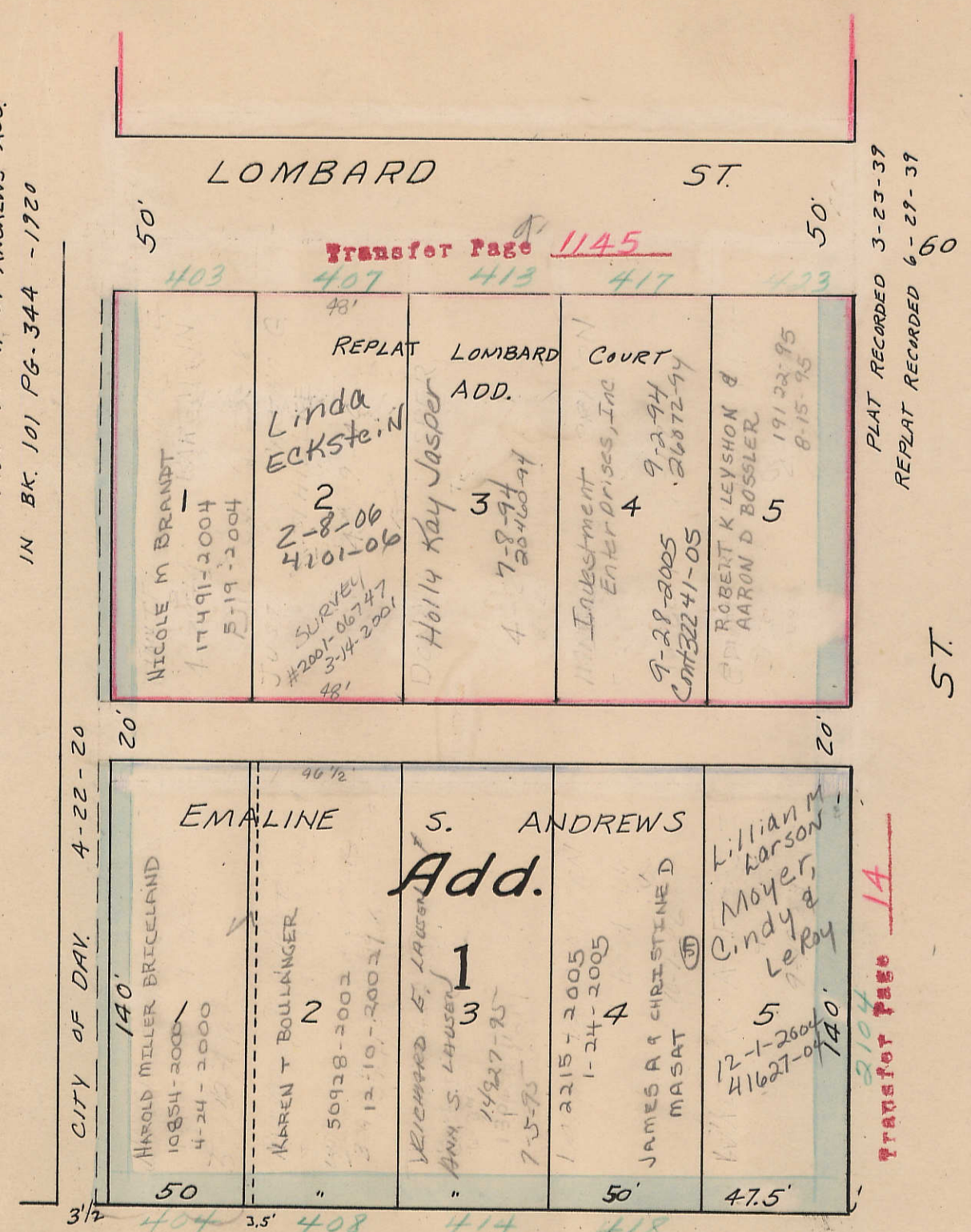


TRANSFER PAGE 66d-193

NOTE
SEE VACATION OF PART OF ANDREWS ADD.
IN BK. 101 PG. 344 - 1920

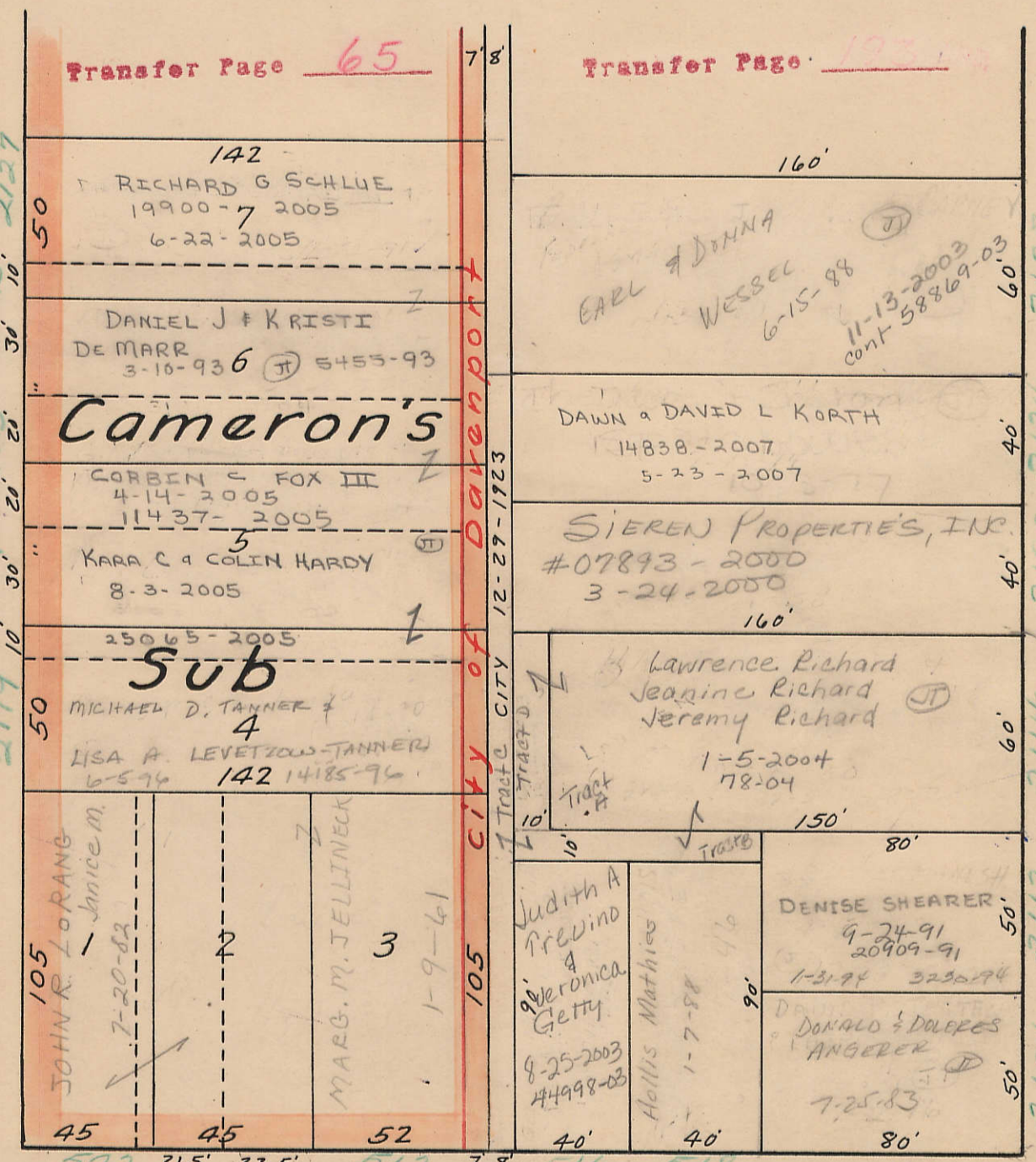
ST.



PLAT RECORDED 3-23-37
REPLAT RECORDED 6-27-37

ST.

Transfer Page 14

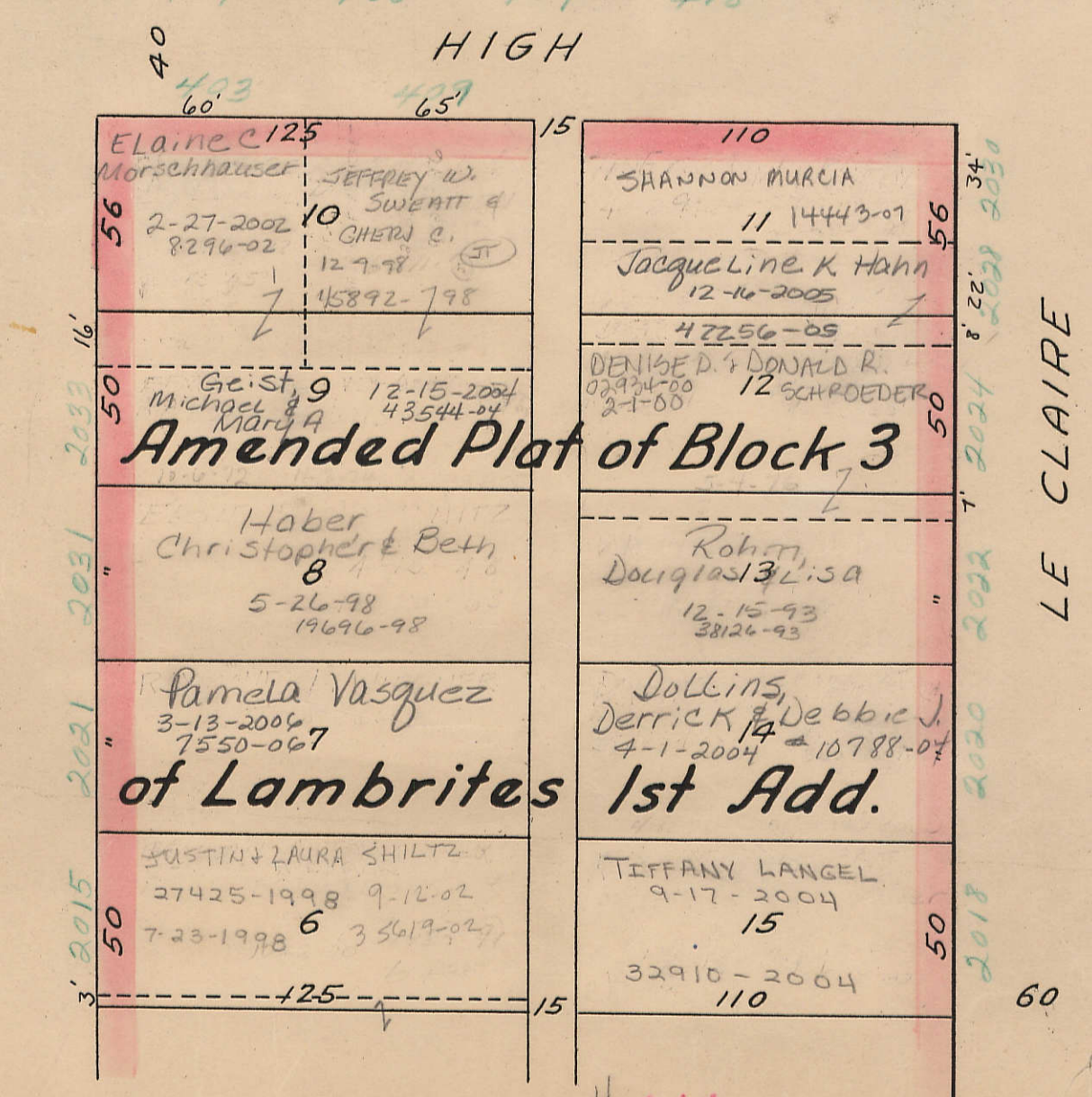


Transfer Page 193

60

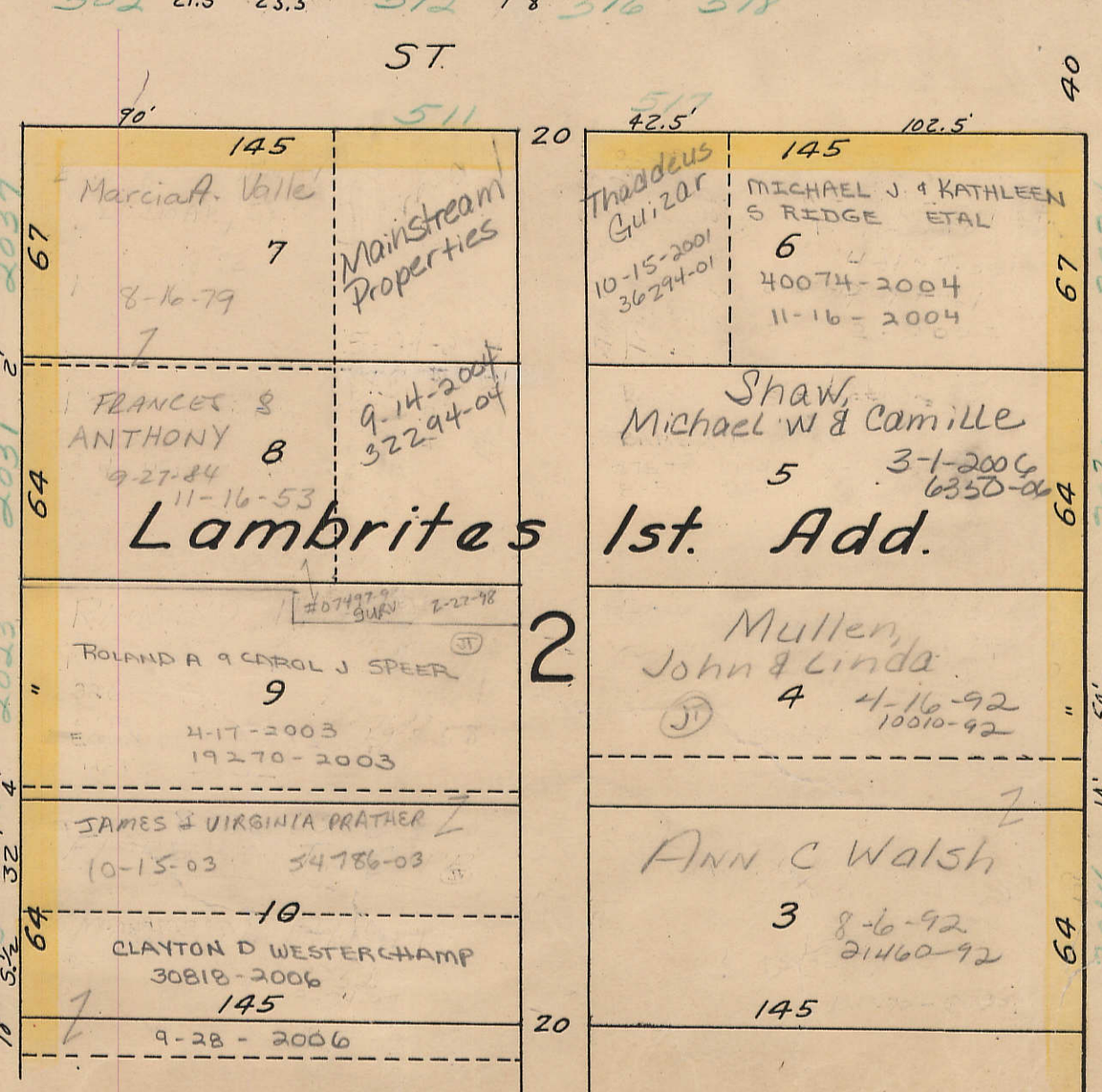
ST.

IOWA



LE CLAIRE

60



FARNAM

60