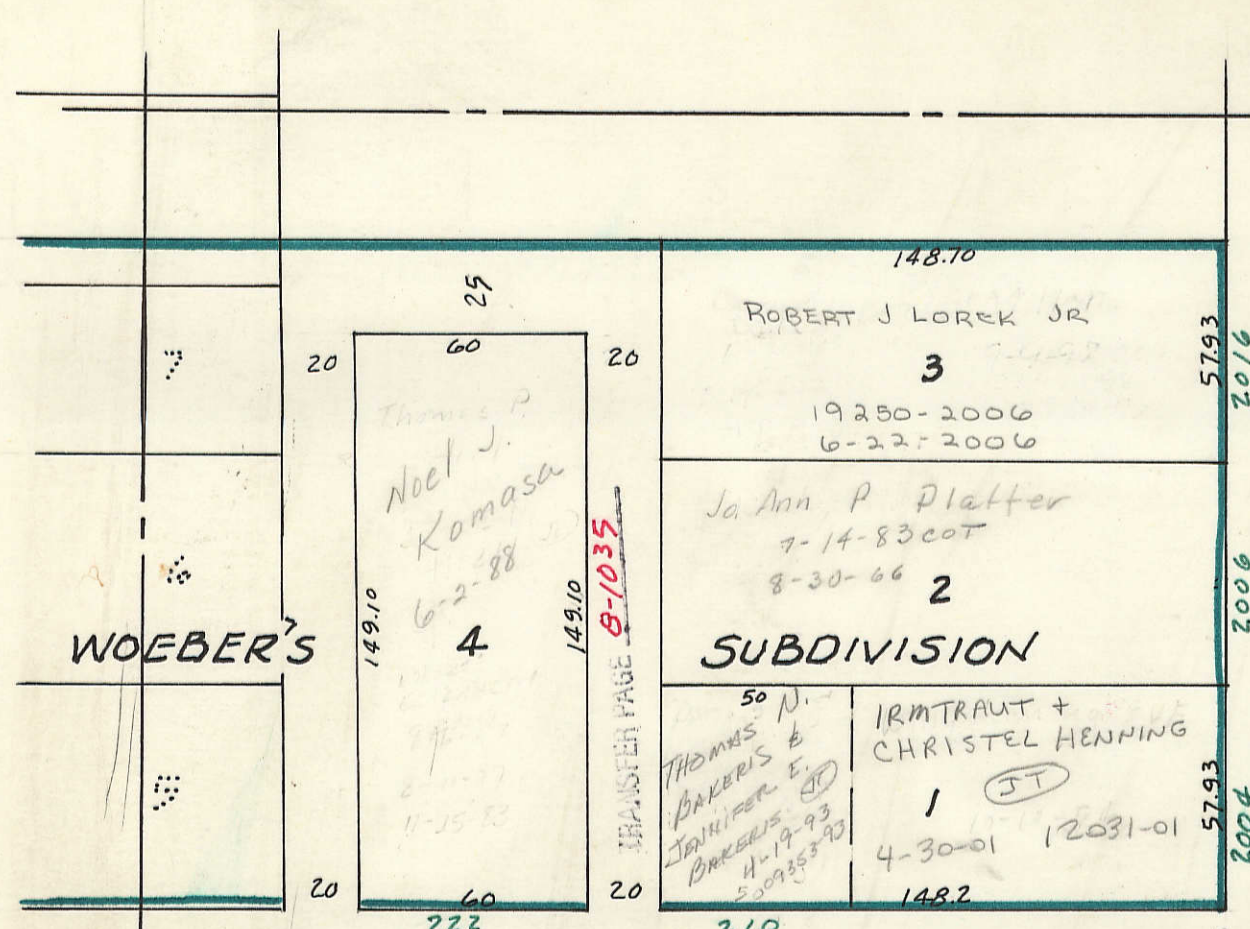
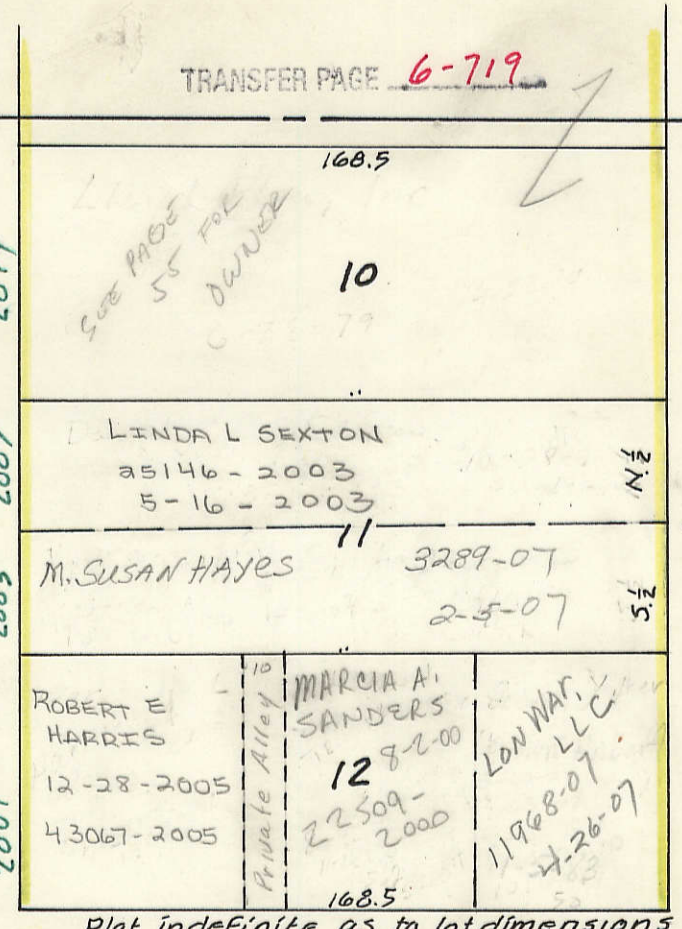


55

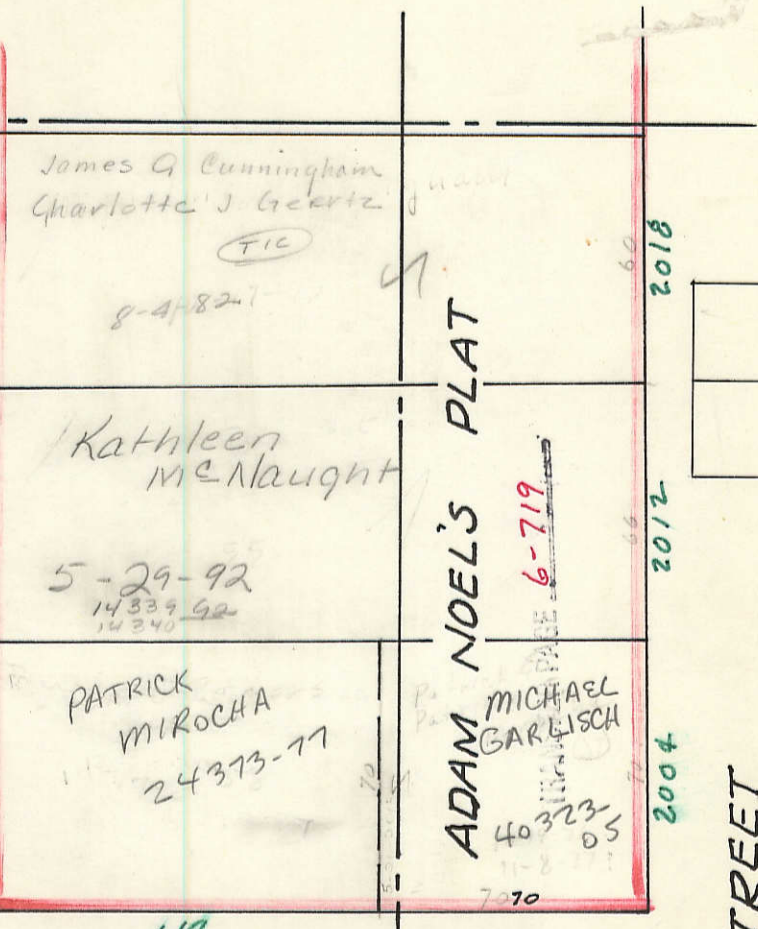


STREET



2

STREET



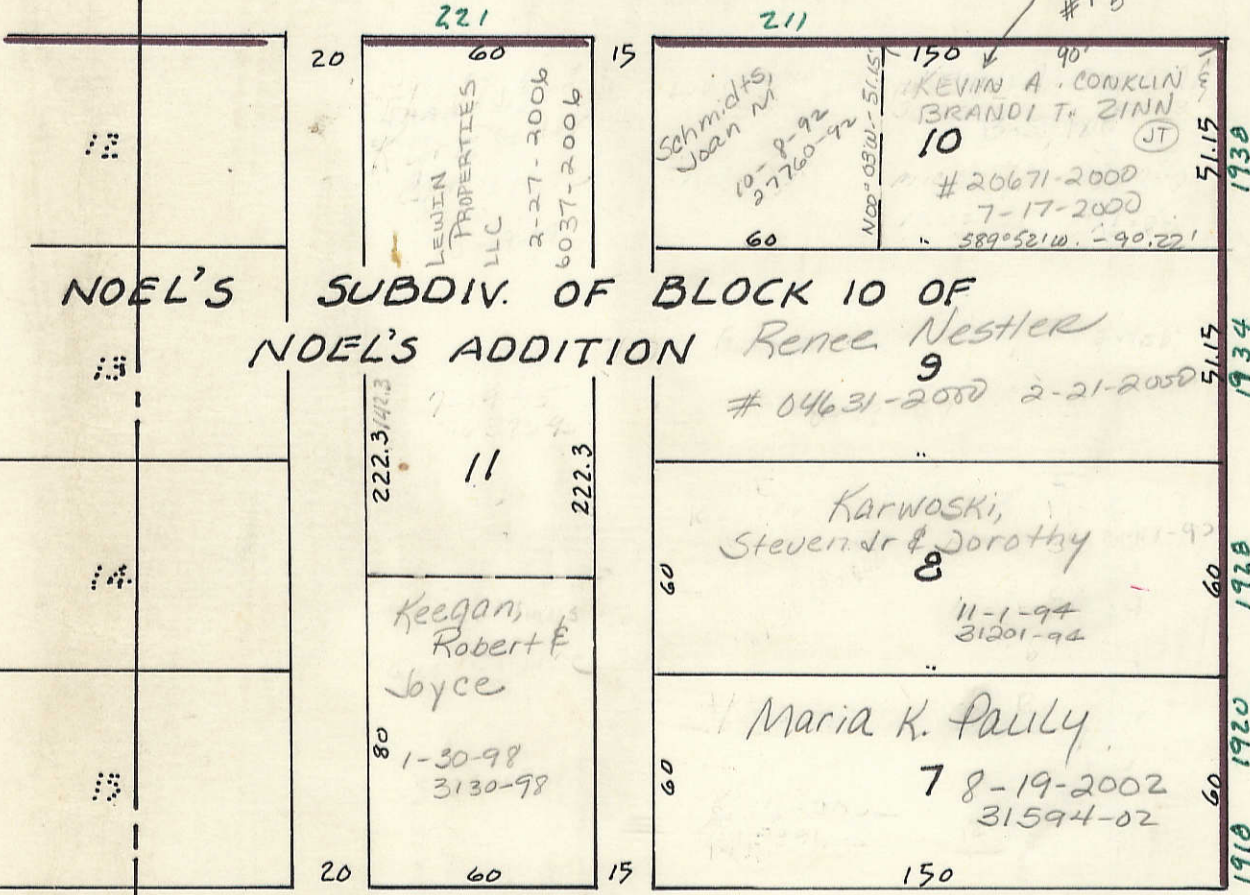
STREET

PLEASANT

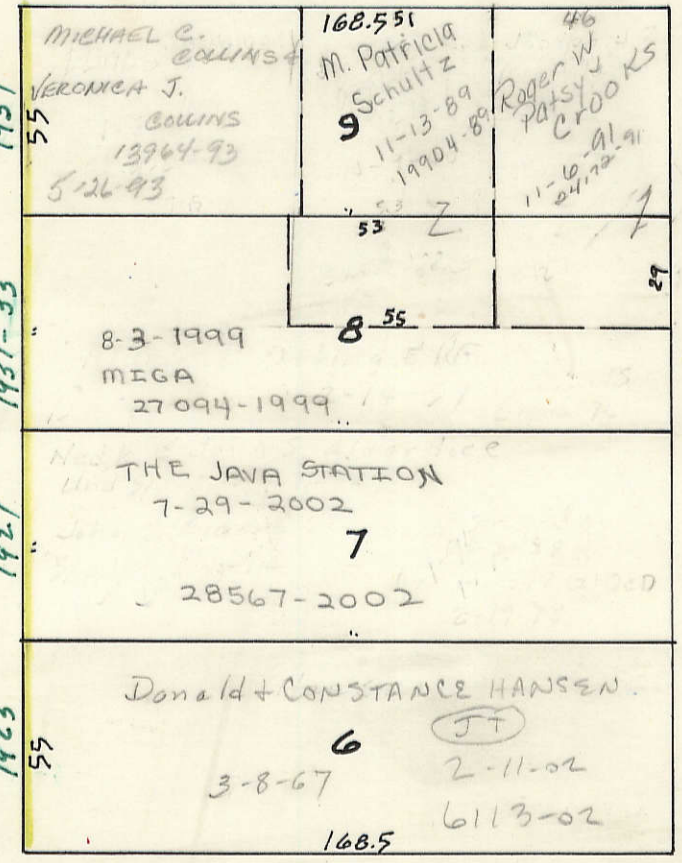
(2ND ST.)

STREET

59



NOEL'S SUBDIV. OF BLOCK 10 OF NOEL'S ADDITION



1

TRANSFER PAGE 6-718

57

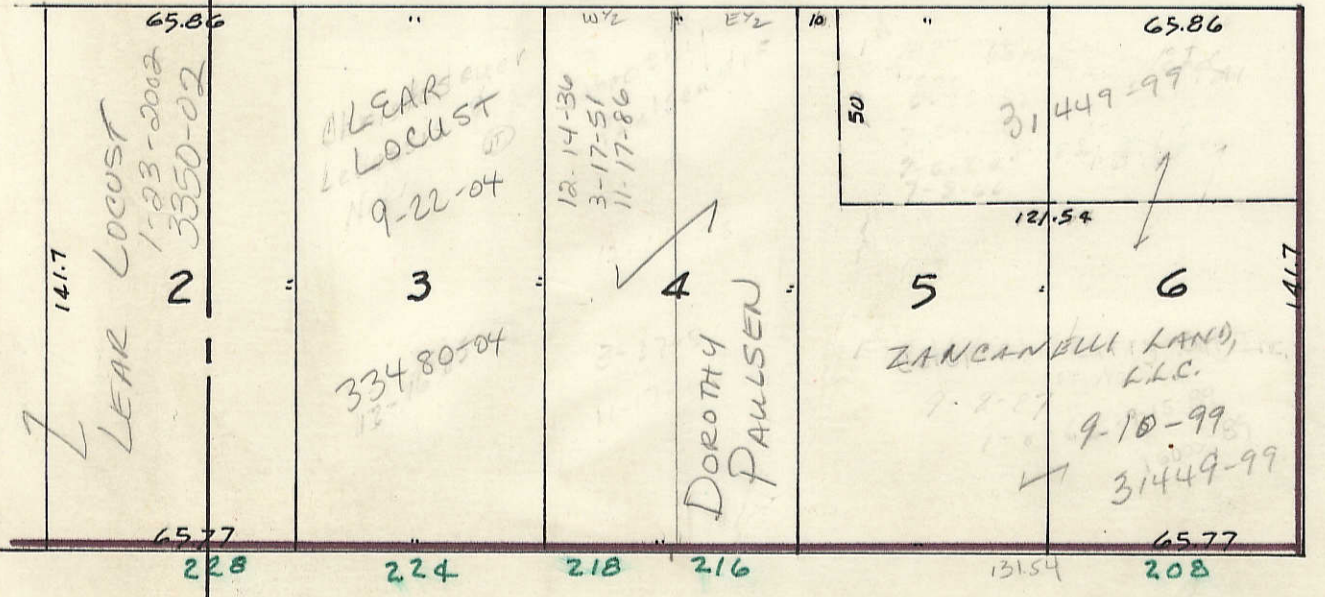
BRADY

10 TRANSFER PAGE 6-723

MAIN

STREET

Section line between SECS 23 & 26



LOCUST

(1ST ST.)

STREET

VOL C

7