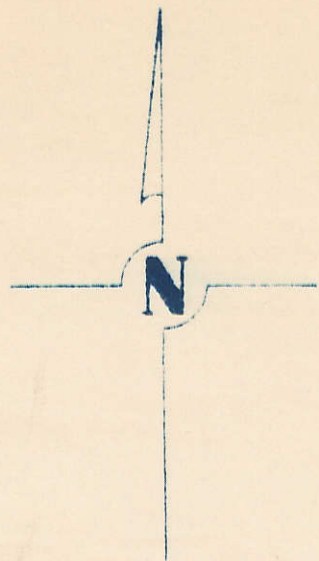


SECTION 4
TOWNSHIP 80 NORTH, RANGE 3 EAST,
5TH PRINCIPAL MERIDIAN
WINFIELD TOWNSHIP
SCOTT COUNTY, IOWA

TRANSFER PAGE 464



SCALE: 1 INCH = 330 FEET

SECTION

PAGE

SECTION 5
PAGE 5

CLINTON

COUNTY

SECTION 3
PAGE 3

WAPSIPINICON

RIVER

DARRELL A. &
JANET J.
ENGLER
3-8-90

GOV'T. LOT NO. 9
61.88 AC.

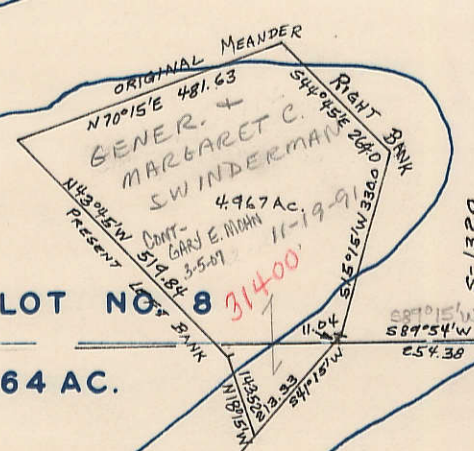
GOV'T. LOT NO. 8
28.64 AC.

GOV'T. LOT NO. 6
26.58 AC.

KEN + SHIRLEY A
CONRAD
12-2-78

GOV'T. LOT NO. 7
43.87 AC.

31699
TOWN OF POINT PLEASANT
Journal A Lds. Dds. PAGE 35



137th AVE

ROAD VACATED
7-23-71

SECTION 9

PAGE 9