

# SECTION 21

TOWNSHIP 80 NORTH, RANGE 3 EAST,

5<sup>TH</sup> PRINCIPAL MERIDIAN

## WINFIELD TOWNSHIP

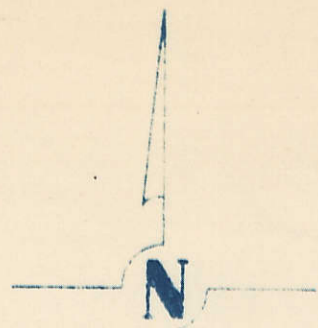
SCOTT COUNTY, IOWA

TRANSFER PAGE 481

SCALE : 1 INCH = 330 FEET

SECTION 16

PAGE 16



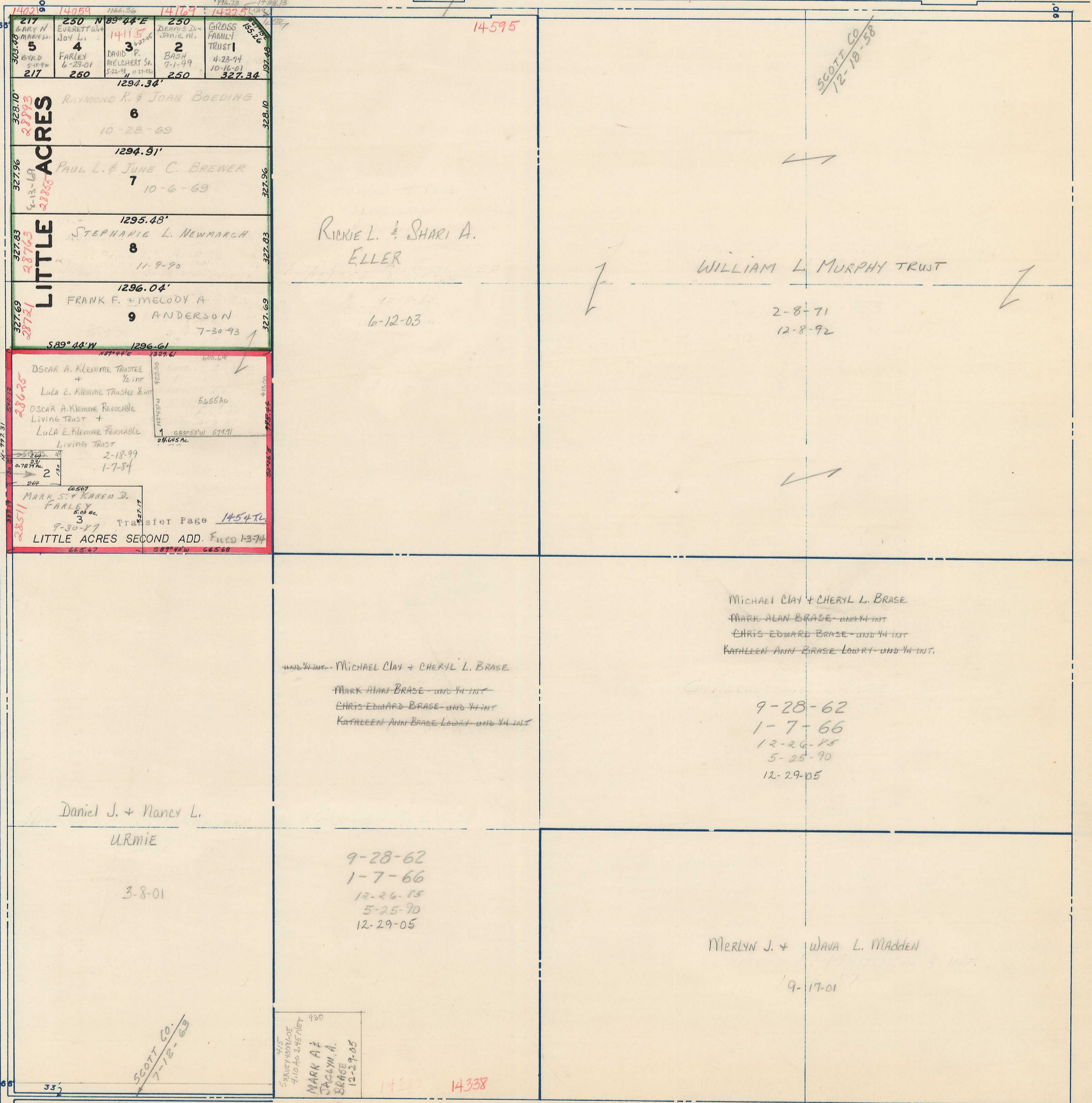
SCOTT CO.  
11-25-58

ALFRED BLOOMER JR.

SCOTT CO.  
11-19-58

80.10ch 290<sup>th</sup> ST. / ST. ANN'S RD

SCOTT CO.  
12-18-58



140<sup>th</sup> AVE

JAMES J. & SUEZIANA PACHA  
12-8-06

PAGE 20

SECTION 20

140<sup>th</sup> AVE

280<sup>th</sup> ST.

SCOTT CO.  
7-12-03

MARK A. & JACQUELYN A. BRAGE  
12-27-05

14330 14338

SECTION 28

PAGE 28

PAGE 22

SECTION 22