

SECTION  
26

Township 79-North; Range 3

EAST OF THE FIFTH PRINCIPAL MERIDIAN

SCOTT COUNTY, IOWA  
SHERIDAN TOWNSHIP

SCALE IN CHAINS



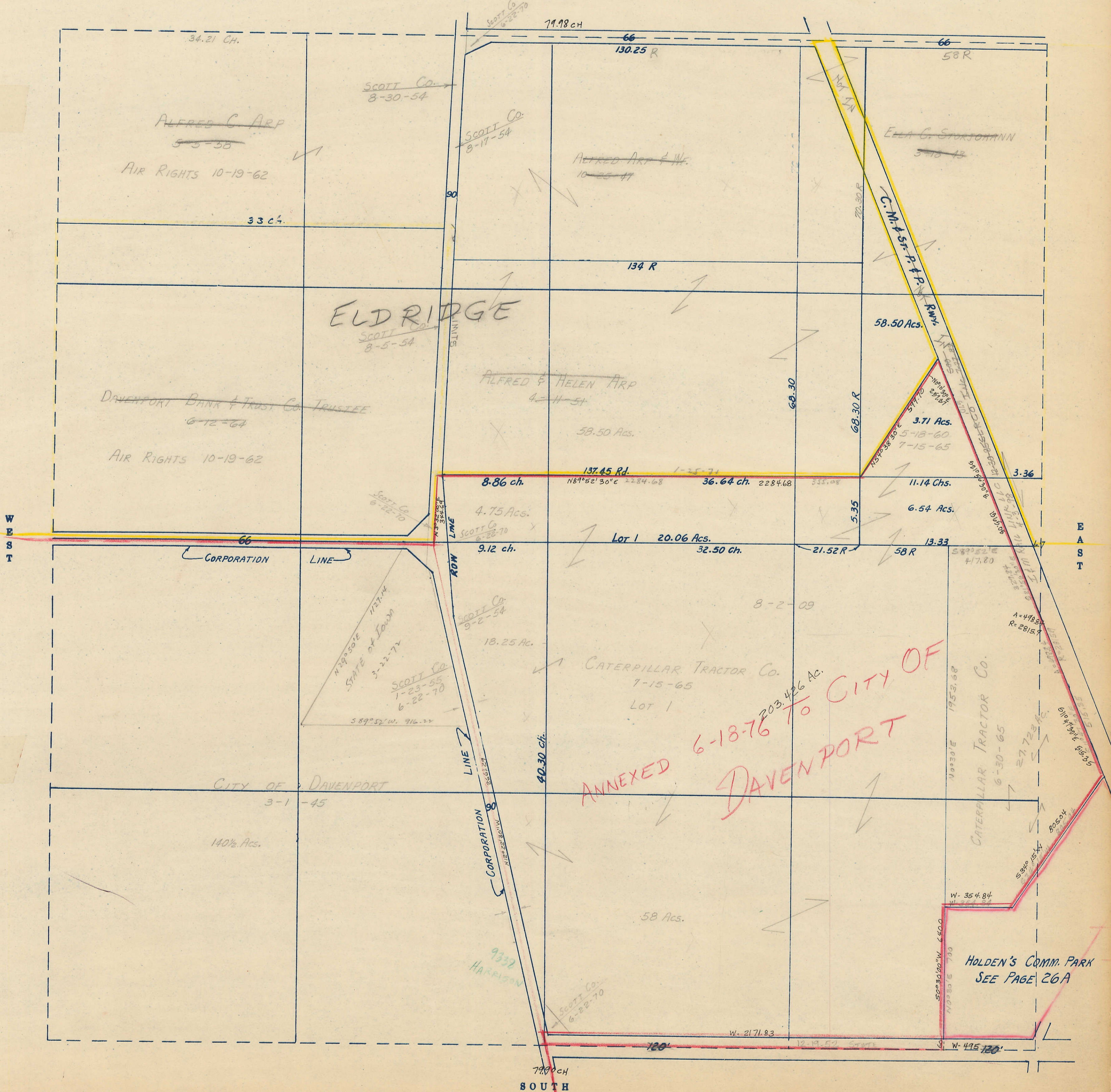
SCALE IN FEET



Transfer Page 450

ANNEX  
1-25-71  
2-20-73  
4-25-74  
6-18-76  
3-12-76  
605276

NORTH

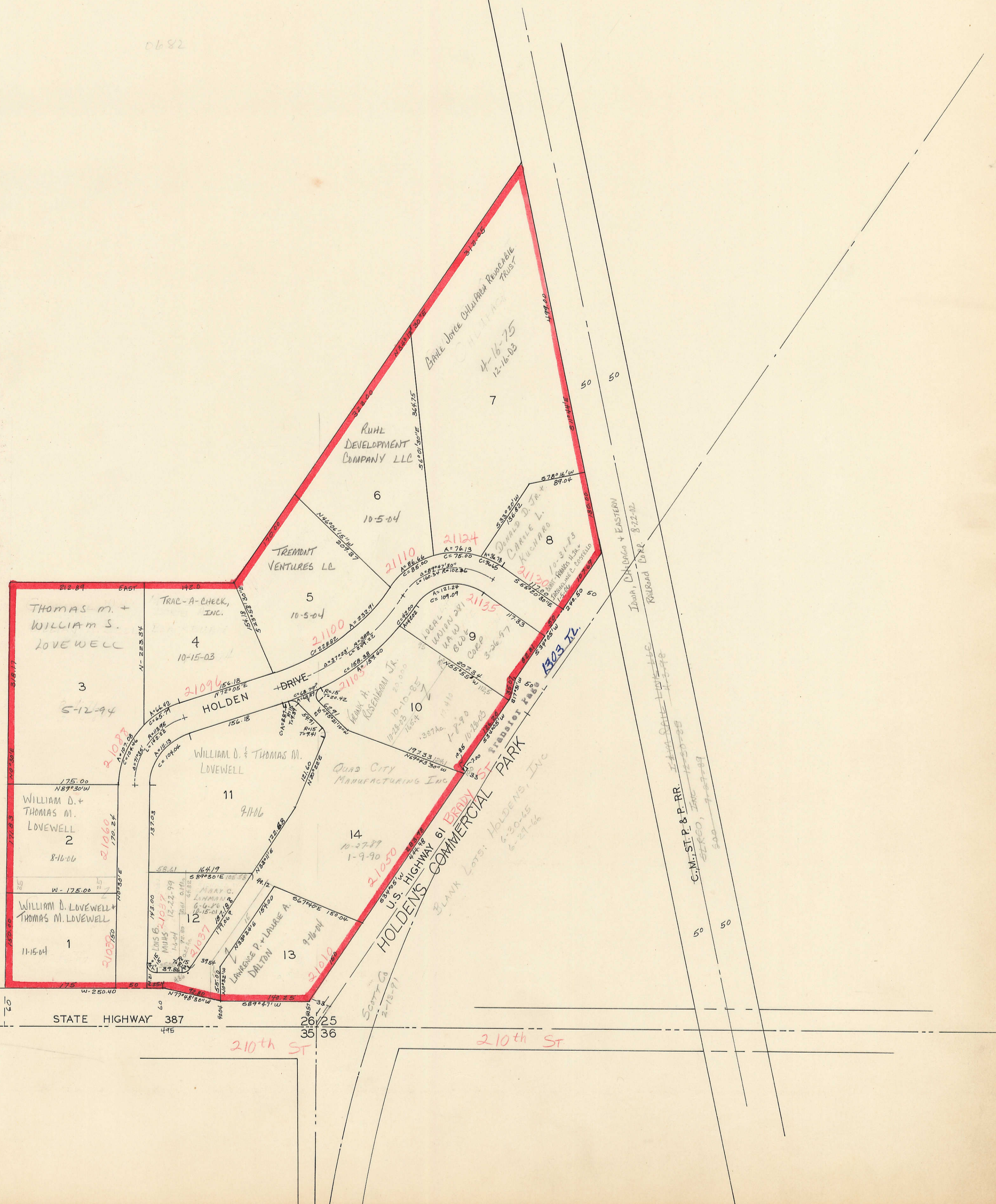


ANNEXED  
6-18-76 TO CITY OF  
DAVENPORT

HOLDEN'S COMM. PARK  
SEE PAGE 26A

SOUTH

0682



THOMAS M. +  
WILLIAM S.  
LOVEWELL

TRAC-A-CHECK,  
INC.

TRENDT  
VENTURES LC

RUHL  
DEVELOPMENT  
COMPANY LLC

BRUCE JORCE CHILIPAN REMOVABLE  
TRUST

DONALD D. JR. +  
CAROLE L.  
KUCHARO

WILLIAM D. +  
THOMAS M.  
LOVEWELL

WILLIAM D. + THOMAS M.  
LOVEWELL

QUAD CITY  
MANUFACTURING INC.

BLANK LOTS: HOLDENS, INC.

WILLIAM D. LOVEWELL +  
THOMAS M. LOVEWELL

STATE HIGHWAY 387

210th ST

U.S. HIGHWAY 61

210th ST

C.M. ST. P. & P. RR.

INDIAN, CHICAGO + EASTERN  
RAILROAD CORP.

26/25  
35/36

50  
50

50  
50

21037

21060

21039

21094

21100

21110

21124

21135

21130

21135

21130

21135

21130

21135

21130

21135

21130

21135

21130

21135

21130

21135

21130