

SECTION
24

Township 79-North; Range 3

EAST OF THE FIFTH PRINCIPAL MERIDIAN

SCOTT COUNTY, IOWA

SHERIDAN TOWNSHIP

TOWN OF ELDRIDGE
NORTH

ANNEX = 1-11-73
2-20-73
4-25-74

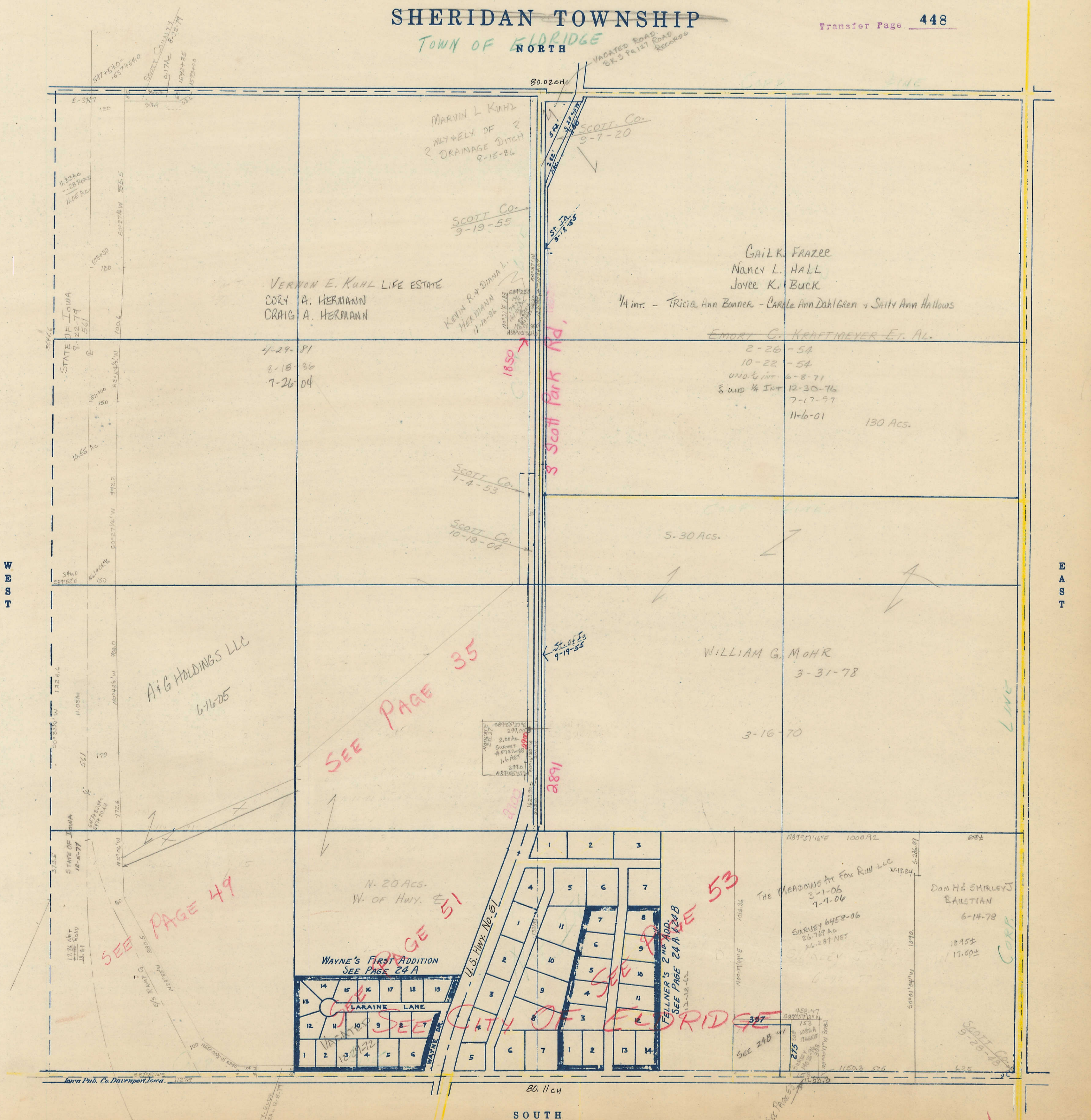
SCALE IN CHAINS



SCALE IN FEET



Transfer Page 448



MARVIN L. KUHL
MULTIPLE OF 2
DRAINAGE DITCH
2-15-86

SCOTT Co.
9-19-55

SCOTT Co.
9-7-20

VERNON E. KUHL LIFE ESTATE
CORY A. HERMANN
CRAIG A. HERMANN

KEVIN R. & DIANA L.
HERMANN
11/1/20

GAIL K. FRAZER
Nancy L. HALL
Joyce K. BUCK

1/4 int. - TRICIA ANN BONNER - CAROL ANN DAHLGREN - SALLY ANN HALLOWS

EMORY G. KRAFTMEYER ET AL.

2-26-54
10-22-54
UND 1/4 INT 6-8-71
3 UND 1/4 INT 12-30-76
7-17-97
11-6-01

130 Acs.

SCOTT Co.
1-4-53

SCOTT Co.
10-19-04

5-30 Acs.

AIG HOLDINGS LLC
6-16-05

WILLIAM G. MOHR
3-31-78

3-16-70

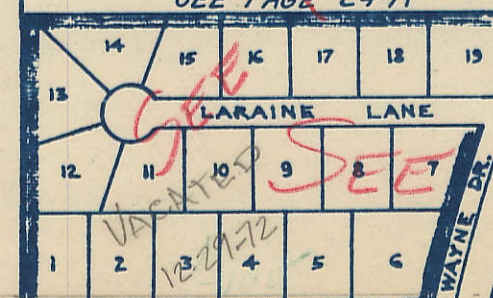
SEE PAGE 35

2891

SEE PAGE 49

N. 20 Acs.
W. OF HWY. 61

WAYNE'S FIRST ADDITION
SEE PAGE 24 A



SEE PAGE 53

FELLNER'S 2ND ADD.
SEE PAGE 24 A & 24 B

THE MEADOWS AT FOX RUN LLC
3-1-06
7-7-06

SHIRLEY 6452-06
26.769 AC
26.287 NET

DON & SHIRLEY J
BAUSTIAN
6-14-78

12.95±
17.60±

CORP

SCOTT Co.
9-25-78

80.11 CH

SOUTH