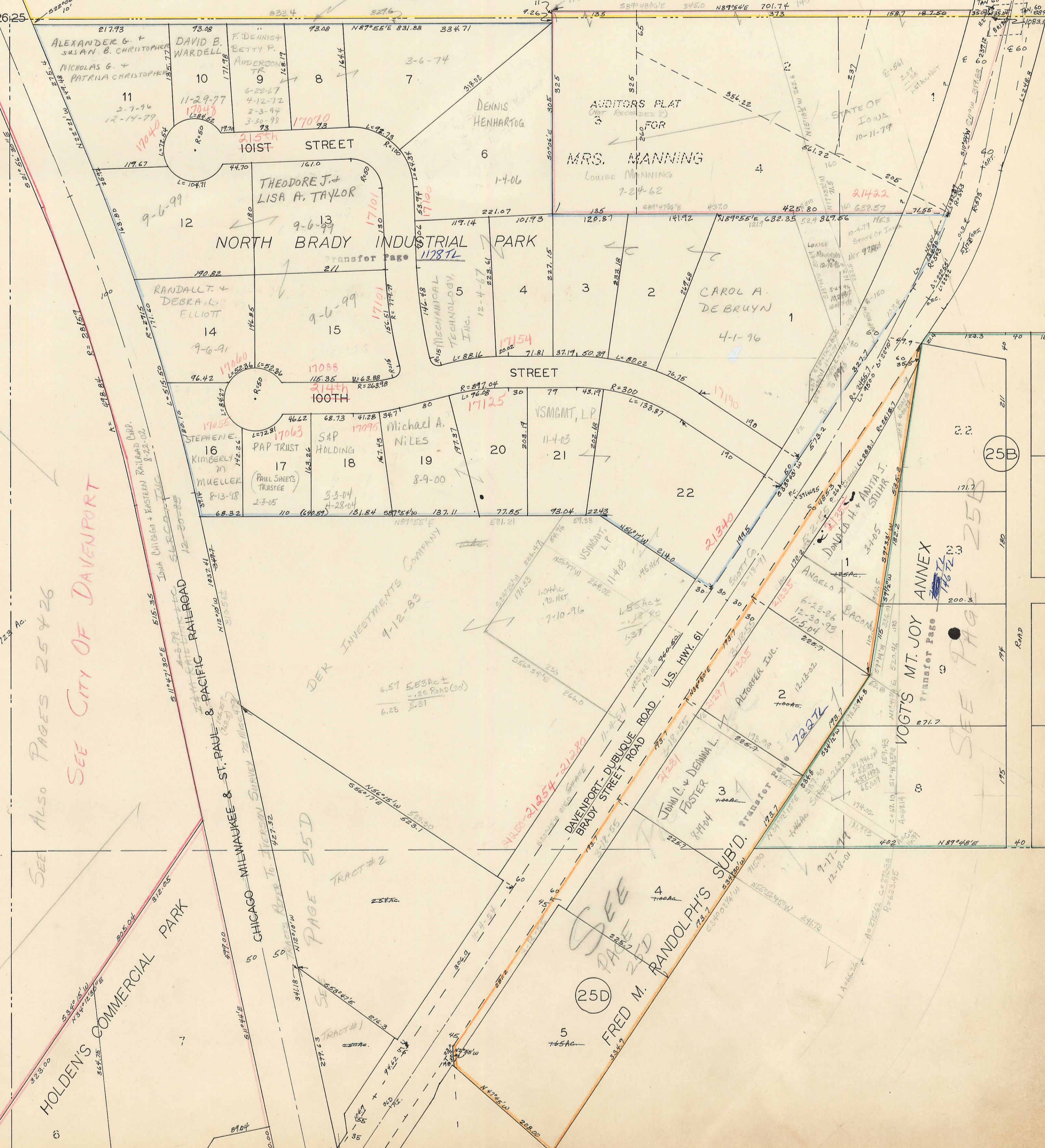


Gerald A. + Eleanor E. Niemann  
Merle D. + Janice A. Niemann  
Verla N. + Richard L. Wolf  
10-25-99



SEE ALSO PAGES 25 & 26  
SEE CITY OF DAVENPORT

HOLDEN'S COMMERCIAL PARK

DEX INVESTMENTS COMPANY  
9-12-83

FRED M. RANDOLPH'S SUB'D.  
SEE PAGE 25D

VOGTS MT. JOY ANNEX  
Transfer Page

SEE PAGE 25B