

Transfer Page 460 LANDS

NW 1/4, NW 1/4 SEC. 36-79-3
SCALE: 1"=100'

ANNEX-5 OCT 76

SEC. 25

25b

210th ST

MT. JOY ROAD

2625
3536

30
30
30

30
30
30

30
30
30

30
30
30

30
30
30

30
30
30

30
30
30

30
30
30

30
30
30

30
30
30

30
30
30

30
30
30

30
30
30

30
30
30

30
30
30

30
30
30

30
30
30

30
30
30

30
30
30

30
30
30

30
30
30

30
30
30

30
30
30

30
30
30

30
30
30

30
30
30

30
30
30

30
30
30

30
30
30

30
30
30

30
30
30

30
30
30

30
30
30

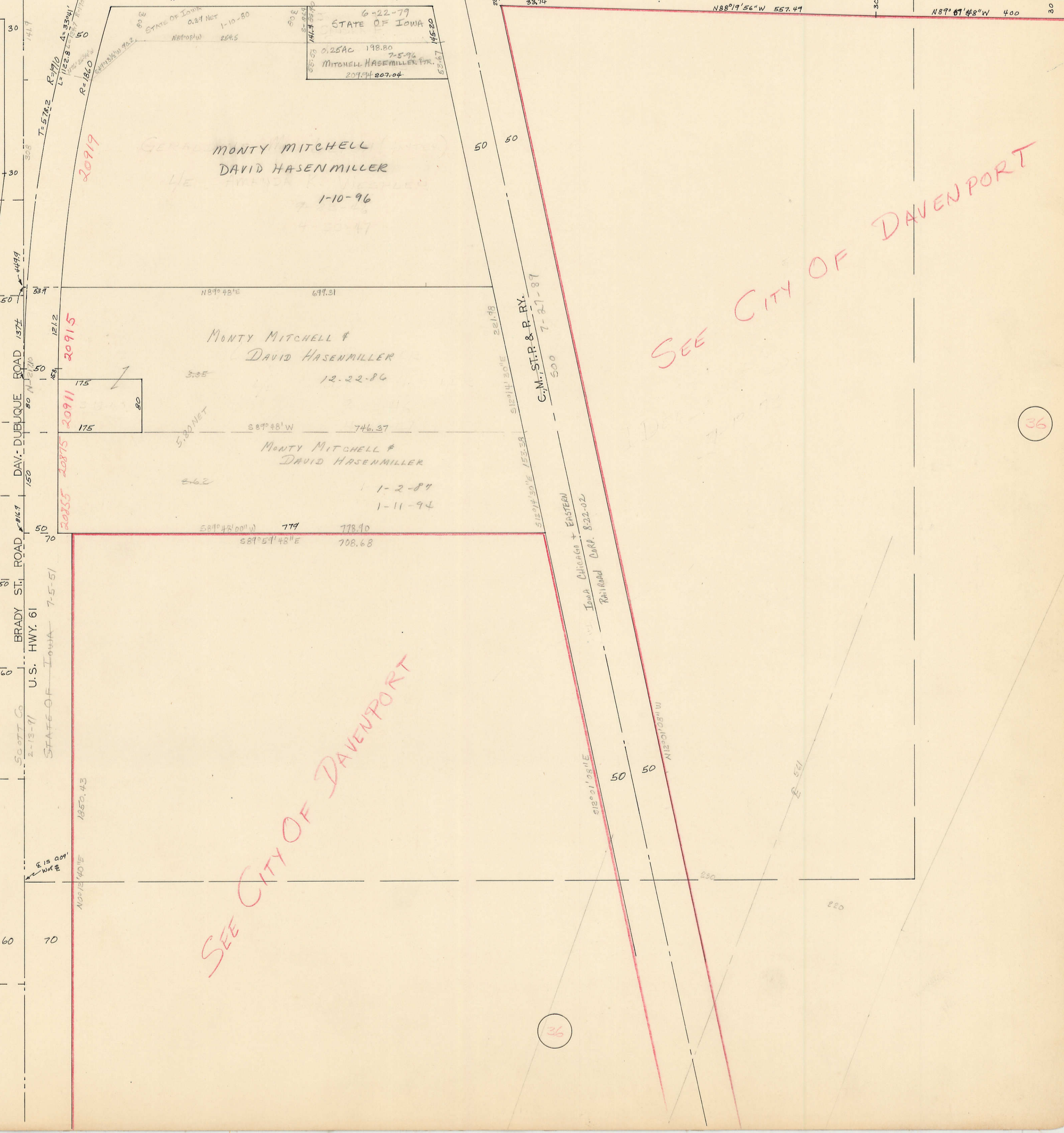
30
30
30

30
30
30

30
30
30

30
30
30

30
30
30



SEC. 35

35A

36

36

SEE CITY OF DAVENPORT

SEE CITY OF DAVENPORT

STATE OF IOWA
0.27 NET
1-10-80
N87°01'W 254.5
STATE OF IOWA
6-22-79
STATE OF IOWA
0.25 AC 198.80
7-5-96
MITCHELL HASENMILLER TR.
20904 207.04
53.67 145.80

GERALD MONTY MITCHELL
DAVID HASENMILLER
1-10-96

MONTY MITCHELL &
DAVID HASENMILLER
12-22-84

MONTY MITCHELL &
DAVID HASENMILLER
1-2-87
1-11-94

779 778.90
587°59'48"E 708.68

DAV. DUBUQUE ROAD 1374
BRADY ST. ROAD 814.7
U.S. HWY. 61
STATE OF IOWA 7-5-51
SCOTT CO 2-13-71
1850.43
175
175
175
175

210th ST
MT. JOY ROAD
N88°19'56"W 557.49
N89°01'48"W 400
N87°48'E 697.31
N87°48'E 746.37
N87°48'W 779
587°59'48"E 708.68
C.M. ST. P. & P. RY.
7-27-87
Iowa Chicago & Eastern
Railroad Corp. 8-22-02
E 524