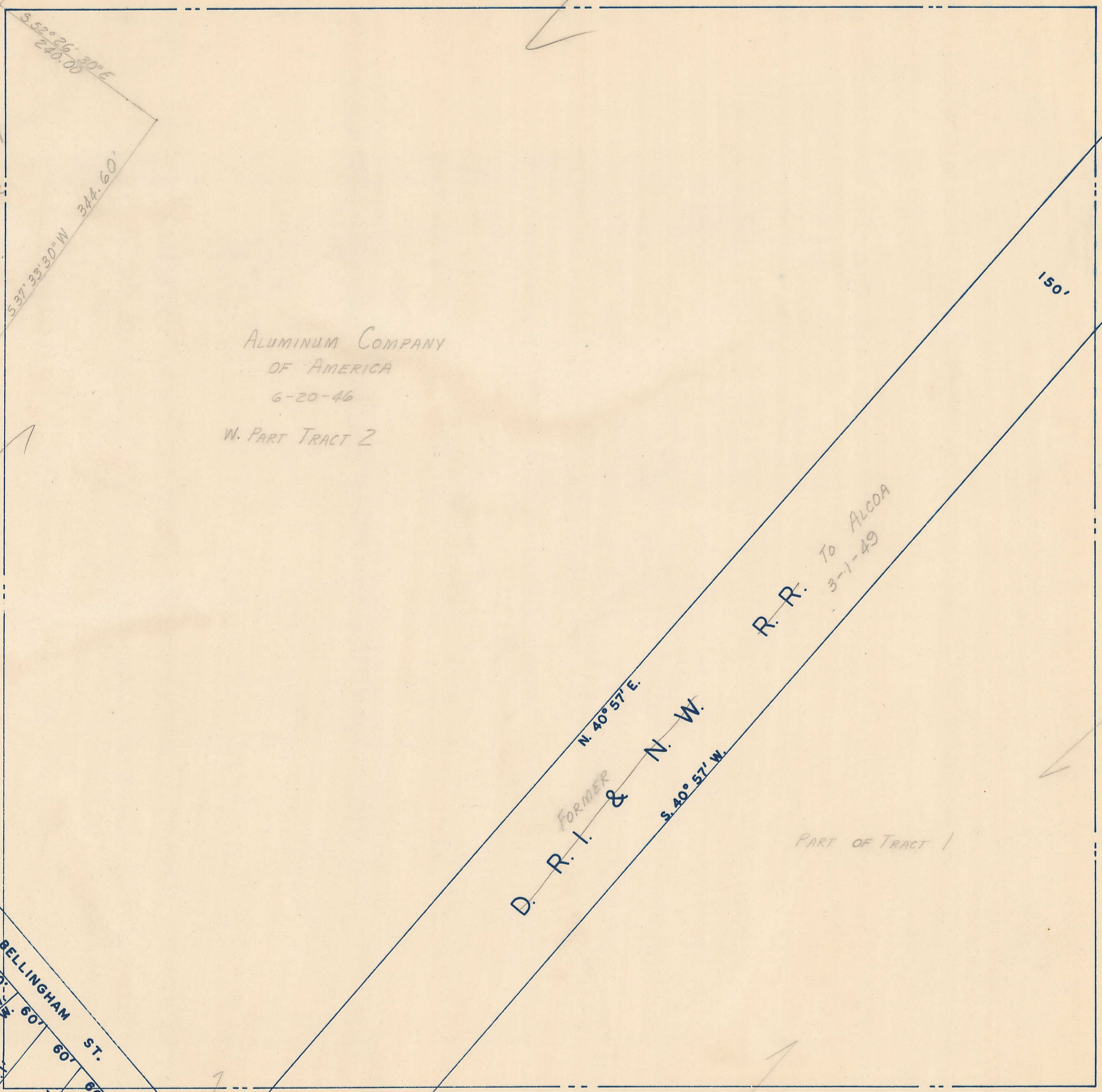


Transfer Page 365 LANDS

3

D. R. I. & NW. Ry. Co.
9-1-49

R=2242
Chord Bears N37°33'30"E
A=344.60
SEE PAGE 17
FOR OWNER



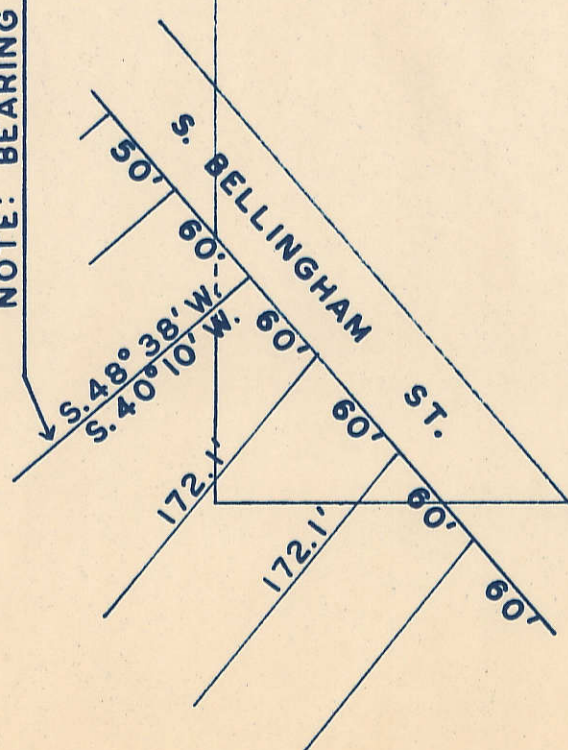
ALUMINUM COMPANY
OF AMERICA
6-20-46
W. PART TRACT 2

R. R. TO ALCOA
3-1-49

FORMER
D. R. I. & N. W.

PART OF TRACT 1

NOTE: BEARING DIFFERENCE



17

21

35