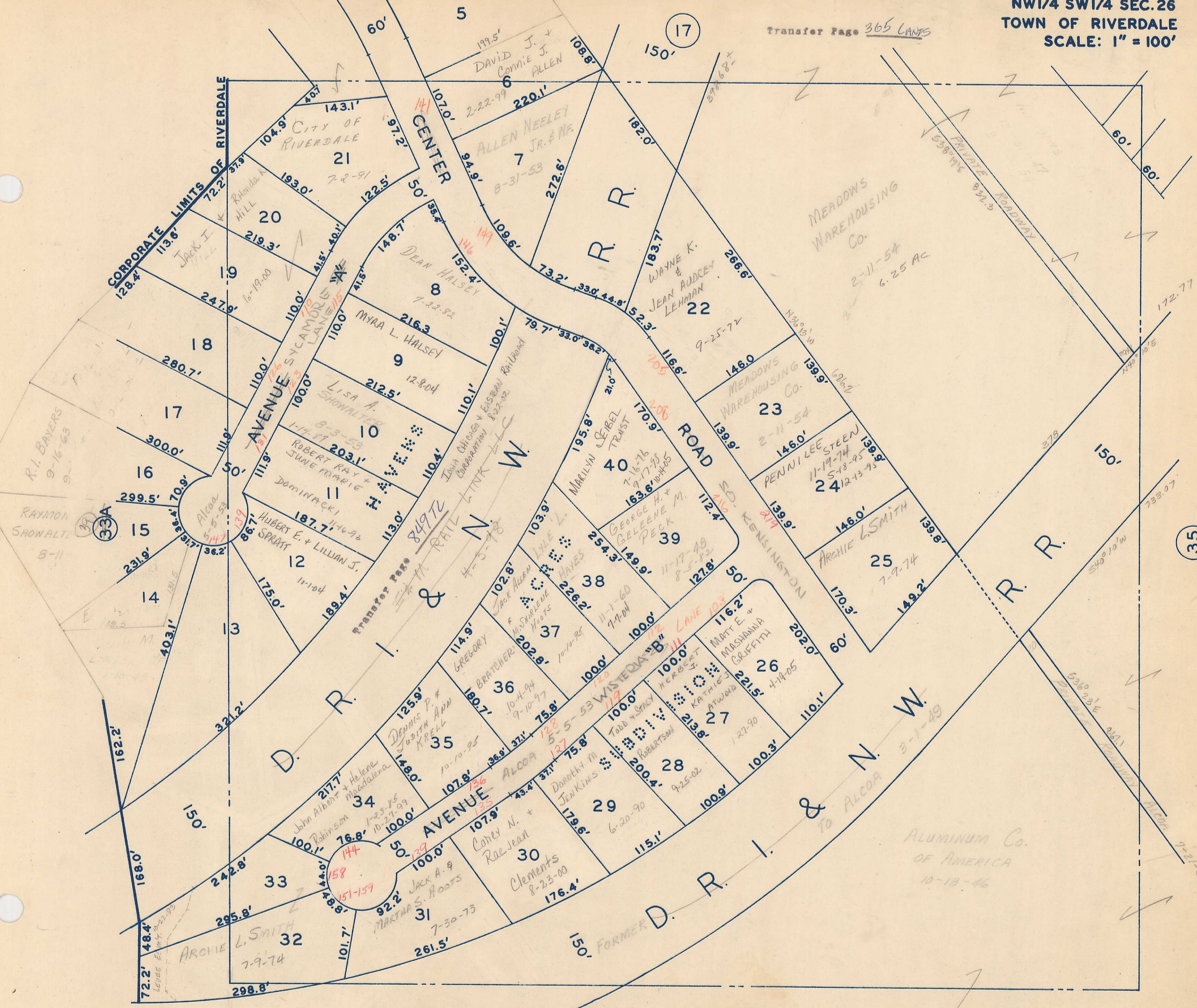


Transfer Page 365 LANDS

CORPORATE LIMITS OF RIVERDALE



R.I. BAYERS
9-16-63

RAYMON
SHOWALZ
8-11

ARCHIE L. SMITH
7-9-74

CITY OF RIVERDALE
21
7-2-91

DEAN WALSEY
8
7-22-82

LISA A. SHOWALTER
10
8-3-53

ROBERT RAY
JUNE MARIE
11
1-17-71

HUBERT E. & LILLIAN J. SPRATT
12
11-1-04

JOHN ALBERT & HELENE MACDONALDA
34
1-23-85

ALCOA
35
10-10-95

ALCOA
36
10-10-95

ALLEN NEELEY JR. & W.F.
7
8-31-53

MYRA L. WALSEY
9
12-8-04

GEORGE H. & GELENE M. PECK
39
11-17-48

MATT E. & MASHANILLA GRIFFITH
26
4-19-05

ALCOA
37
10-10-95

ALCOA
38
10-10-95

ALCOA
39
10-10-95

ALCOA
40
10-10-95

WAYNE K. & JEAN AUDREY LEHMAN
22
9-25-72

MARILYN & REBEL TRUST
40
7-16-76

GEORGE H. & GELENE M. PECK
39
11-17-48

MATT E. & MASHANILLA GRIFFITH
26
4-19-05

ALCOA
37
10-10-95

ALCOA
38
10-10-95

ALCOA
39
10-10-95

ALCOA
40
10-10-95

MEADOWS WAREHOUSING CO.
2-11-54
6.25 AC

MEADOWS WAREHOUSING CO.
2-11-54

PENNY LEE STEEN
24
11-19-74

ARCHIE L. SMITH
25
7-9-74

ALCOA
37
10-10-95

ALCOA
38
10-10-95

ALCOA
39
10-10-95

ALCOA
40
10-10-95

ALUMINUM CO. OF AMERICA
10-18-46

ALUMINUM CO. OF AMERICA
10-18-46

ALUMINUM CO. OF AMERICA
10-18-46

ALUMINUM CO. OF AMERICA
10-18-46

ALUMINUM CO. OF AMERICA
10-18-46

ALUMINUM CO. OF AMERICA
10-18-46

ALUMINUM CO. OF AMERICA
10-18-46

ALUMINUM CO. OF AMERICA
10-18-46

ALUMINUM CO. OF AMERICA
10-18-46

ALUMINUM CO. OF AMERICA
10-18-46

ALUMINUM CO. OF AMERICA
10-18-46

ALUMINUM CO. OF AMERICA
10-18-46

ALUMINUM CO. OF AMERICA
10-18-46

ALUMINUM CO. OF AMERICA
10-18-46

ALUMINUM CO. OF AMERICA
10-18-46

ALUMINUM CO. OF AMERICA
10-18-46

ALUMINUM CO. OF AMERICA
10-18-46

ALUMINUM CO. OF AMERICA
10-18-46

ALUMINUM CO. OF AMERICA
10-18-46

ALUMINUM CO. OF AMERICA
10-18-46

ALUMINUM CO. OF AMERICA
10-18-46

ALUMINUM CO. OF AMERICA
10-18-46

ALUMINUM CO. OF AMERICA
10-18-46

ALUMINUM CO. OF AMERICA
10-18-46

ALUMINUM CO. OF AMERICA
10-18-46

ALUMINUM CO. OF AMERICA
10-18-46

ALUMINUM CO. OF AMERICA
10-18-46

ALUMINUM CO. OF AMERICA
10-18-46

ALUMINUM CO. OF AMERICA
10-18-46

ALUMINUM CO. OF AMERICA
10-18-46

ALUMINUM CO. OF AMERICA
10-18-46

ALUMINUM CO. OF AMERICA
10-18-46