

# SECTION 7

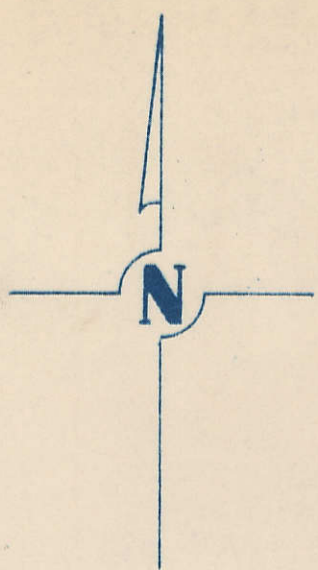
TOWNSHIP 78 NORTH, RANGE 5 EAST,

5<sup>TH</sup> PRINCIPAL MERIDIAN

PLEASANT VALLEY TWP.

SCOTT COUNTY, IOWA

TRANSFER PAGE 372

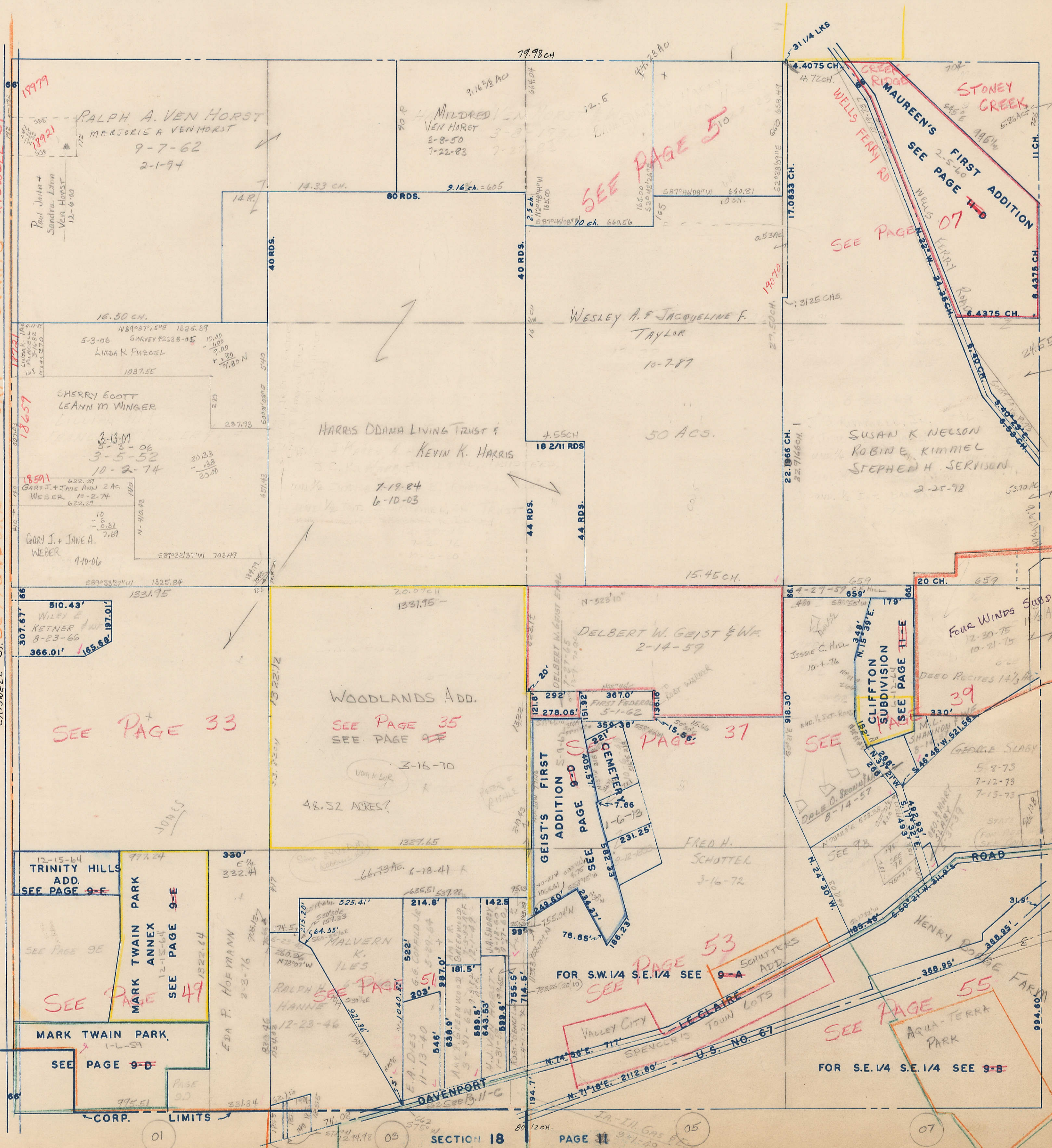


SCALE : 1 INCH = 330 FEET

SECTION 6

PAGE 2

SECTION 12 PAGE 12  
CRISWELL ST. BETTENDORF CORP. LIMITS CRISWELL ST.



SEE PAGE 5

SEE PAGE 07

SEE PAGE 33

SEE PAGE 35

PAGE 37

SEE PAGE 49

SEE PAGE 53

SEE PAGE 55

SECTION 18

PAGE 11

01  
10A  
17  
33  
10B  
49

SEC 7