

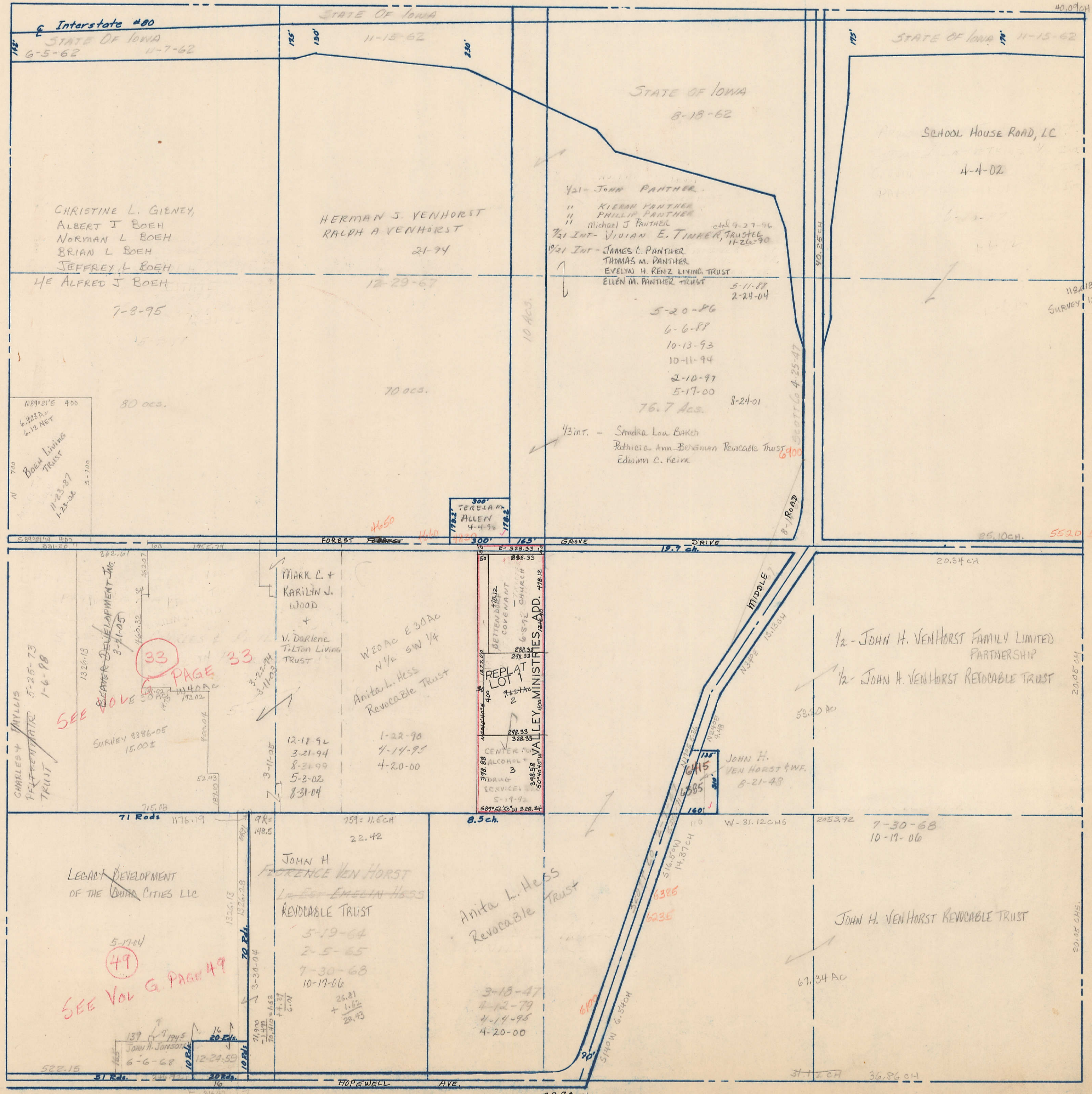
SECTION 2  
TOWNSHIP 78 NORTH, RANGE 4 EAST,  
5<sup>TH</sup> PRINCIPAL MERIDIAN  
PLEASANT VALLEY TOWNSHIP  
CITY OF BETTENDORF  
SCOTT COUNTY, IOWA

TRANSFER PAGE 353

SCALE: 1 INCH = 330 FEET

SECTION 35

PAGE LINCOLN TWP.



PAGE 5

SECTION 3

PAGE 3

SECTION 1

SECTION 11

PAGE 4

2-78-4